

Outline of the Incheon Free Economic Zone



Project duration
2003 ~ 2030

(2001.03) New Airport Opening
(2003.08) Designated as the first
free economic zone in Korea



Size
122.43 km²



Planned Population
545,803



Budget
\$ 36.1 Billion





ifez



YEONGGONGNARI in 2003

YEONGGONGNARI Now

IFEZ Specialized Business Areas



Perfect Infrastructure

- Incheon International Airport
- Incheon New Port
- International Cruise Terminal
- Global Campus

Highly qualified workforce

- IT(Information Tech) workforce
- BT(Bio Tech) workforce
- NT(Nano Tech) workforce

International City

- Optimal business environment
- The best settlement area for foreigners

Transportation Tourism/Leisure Logistics Education Healthcare



1
WHY

Why do it?
What's the need?

2
WHAT

What should it do?

3
HOW

How will it get done?

*Global Leading
Smart U-city 중도!*

Why "Smart City"?

through “Smart City”,
services that were previously configured individually are integrated into one

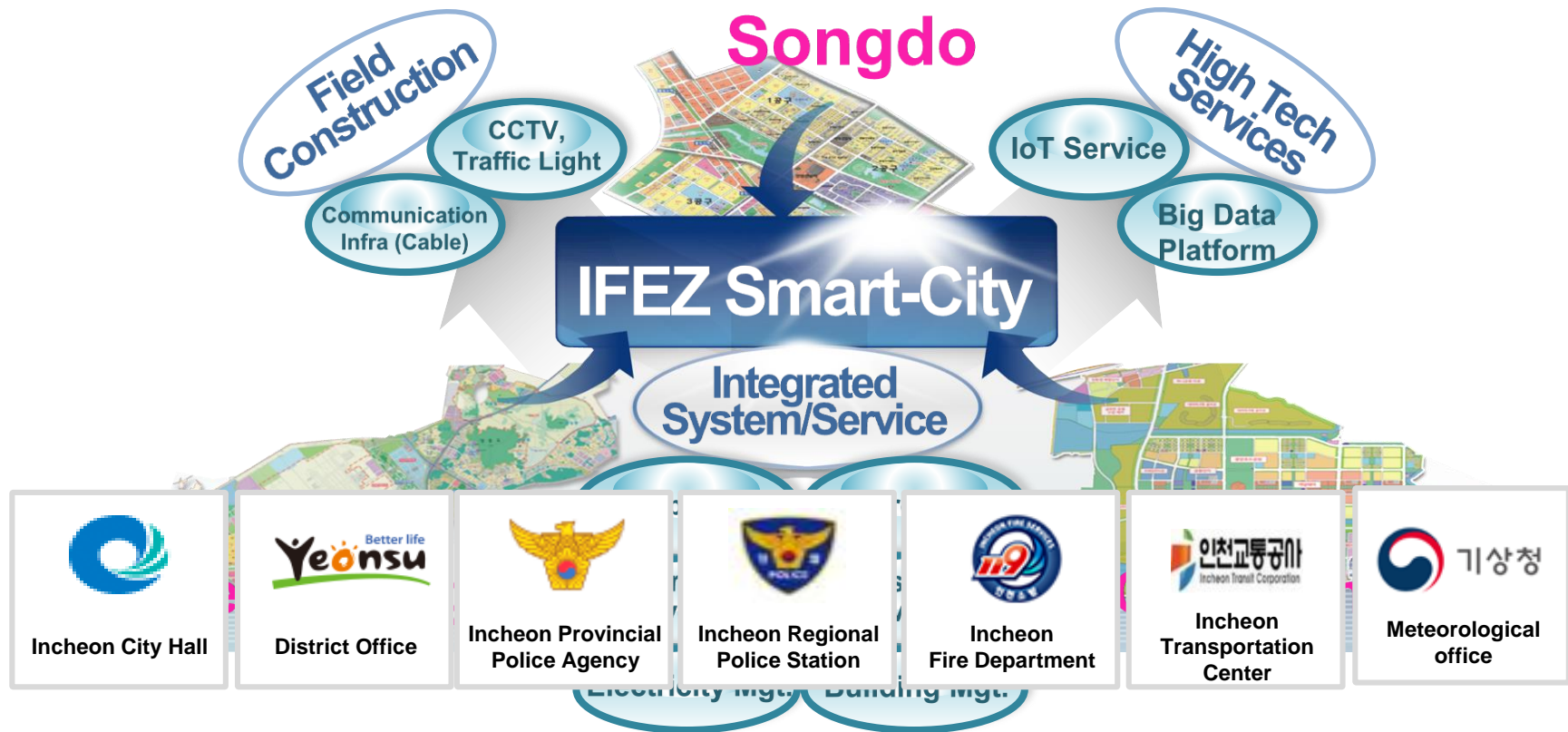
Conventional



Non-Conventional



Structure of IFEZ Smart City



1
WHY

Why do it?
What's the need?

2
WHAT

What should it do?

3
HOW

How will it get done?

*Global Leading
Smart U-city 중도!*

How to build "Smart City"?

“Smart-City” has changed the way to solve urban problems.



- ◆ Large-scale investment
- ◆ Long-term plan
- ◆ Physical infrastructure
- ◆ Residential space

- ◆ The right investment at the right place
- ◆ Step by step plan
- ◆ Maximization of investment efficiency
- ◆ Services based on city data



“Smart City” Components

Smart City Approach 5 Layers

3 Core Elements

Service

Platform

Infrastructure

The Second Focal Area

Smart Service evolved by Public & Private Service
- E-Government, Smart Home IoT

Smart Space combined by IT
- GIS, Facility, Equipment

Smart Infrastructure combined by IT
- Energy, Traffic, Communications system

Basic Infrastructure
- Land, road, water, electricity, etc.

Urban Planning (Real Estate Development)

The First Focal Area

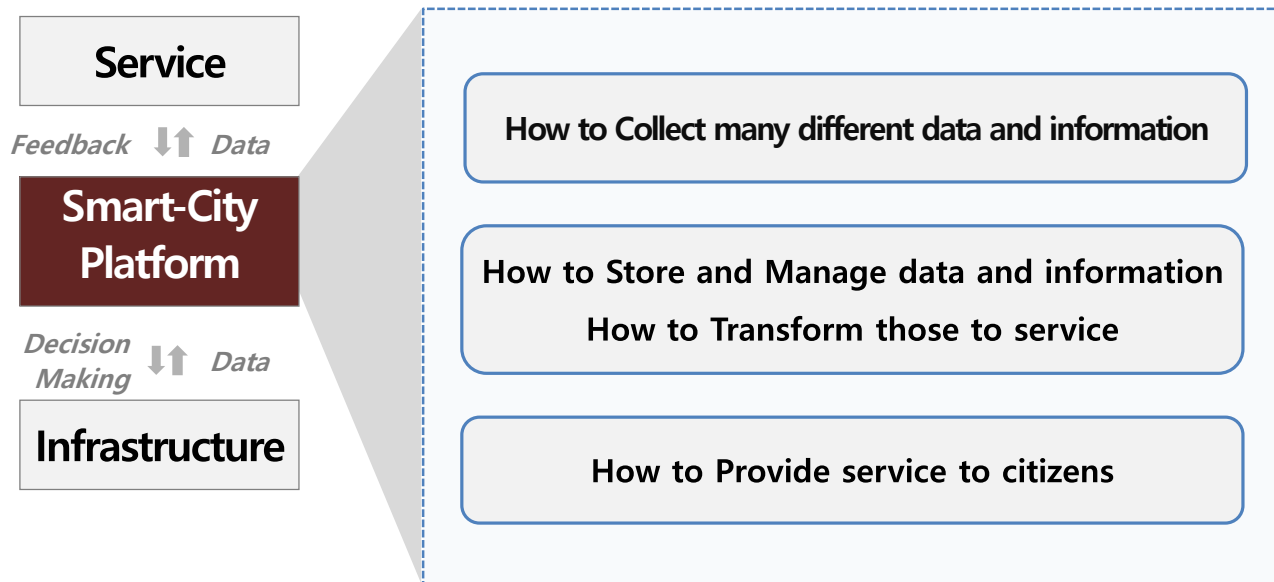
- Urban Utilization Side
- Consumer-centered
- Commercial, Cultural and Business

- New Town Development Side
- Provider-centered
- Residential and public services

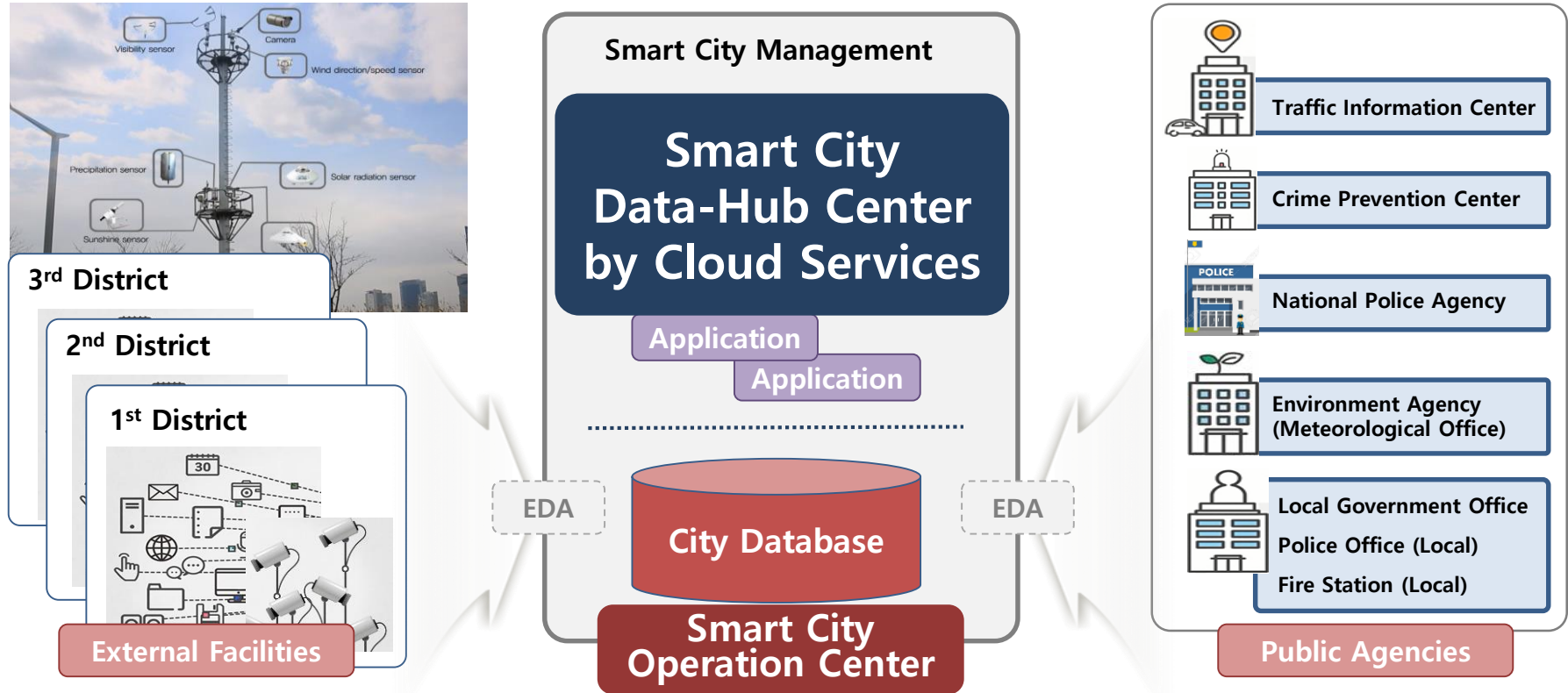
The infrastructure and services are linked to each other in the center of **the Smart City Platform**.

The City Integrated Operation Center is equipped with a technology drive system centered on core technology, a data driven system for integration between areas, and a governance system for continuous implementation

3 Core Elements



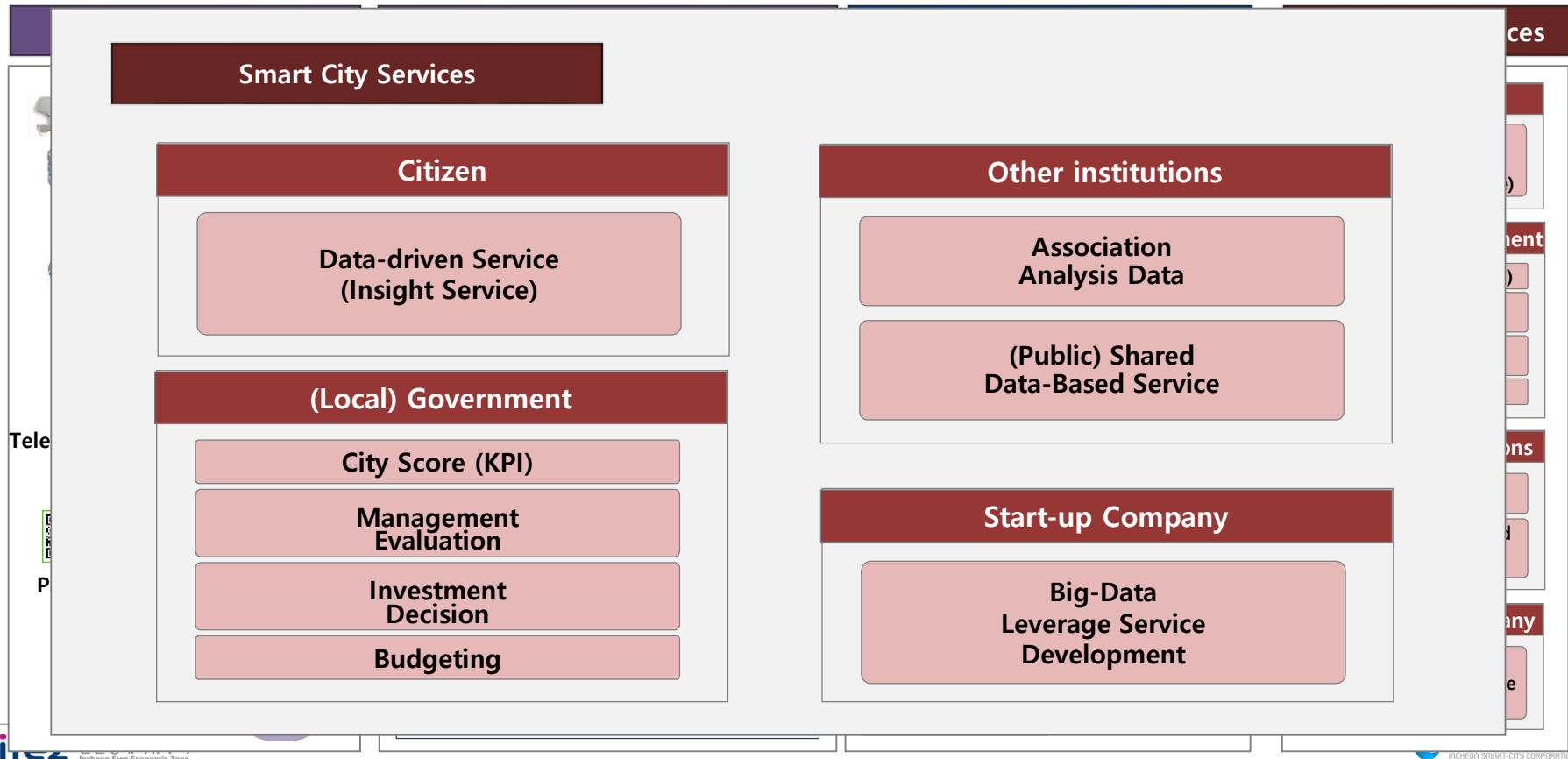
"Smart City" Main Components



IFEZ SMART CITY IOC (Intelligent Operation Center)



Data-Hub Center with Big Data



Smart City Sustainable Program

Provision of a **new Startup environment**

based on smartcity data and 4th industrial revolution technology.

Creation of a **Startup self-sustaining ecosystem**

with the participation of citizens, enterprises, organizations, etc.

Big-data Based Biz Support

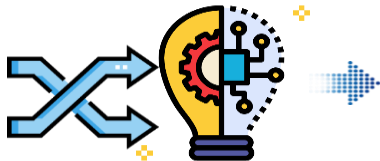
High-Tech(AI) Biz Support

Commercialization Consulting

Data Processing

Analysis

Visualization



1
WHY

Why do it?
What's the need?

2
WHAT

What should it do?

3
HOW

How will it get done?

What

"IFEZ Smart-City"?

*Global Leading
Smart U-city 흥도!*



Vision

“Global Leading Smart City”

Anytime,
Anywhere,
Anyone
with Smart City Services

Convenient
City Service

Better Quality
Of City Life

24 hrs
City Control

The Safest City

Private-Public
Profit Model



Strategy

“Simple & Complete Smart City”

One Space



IFEZ Smart City
Operation Center

One System



IFEZ Smart City
H/W Platform

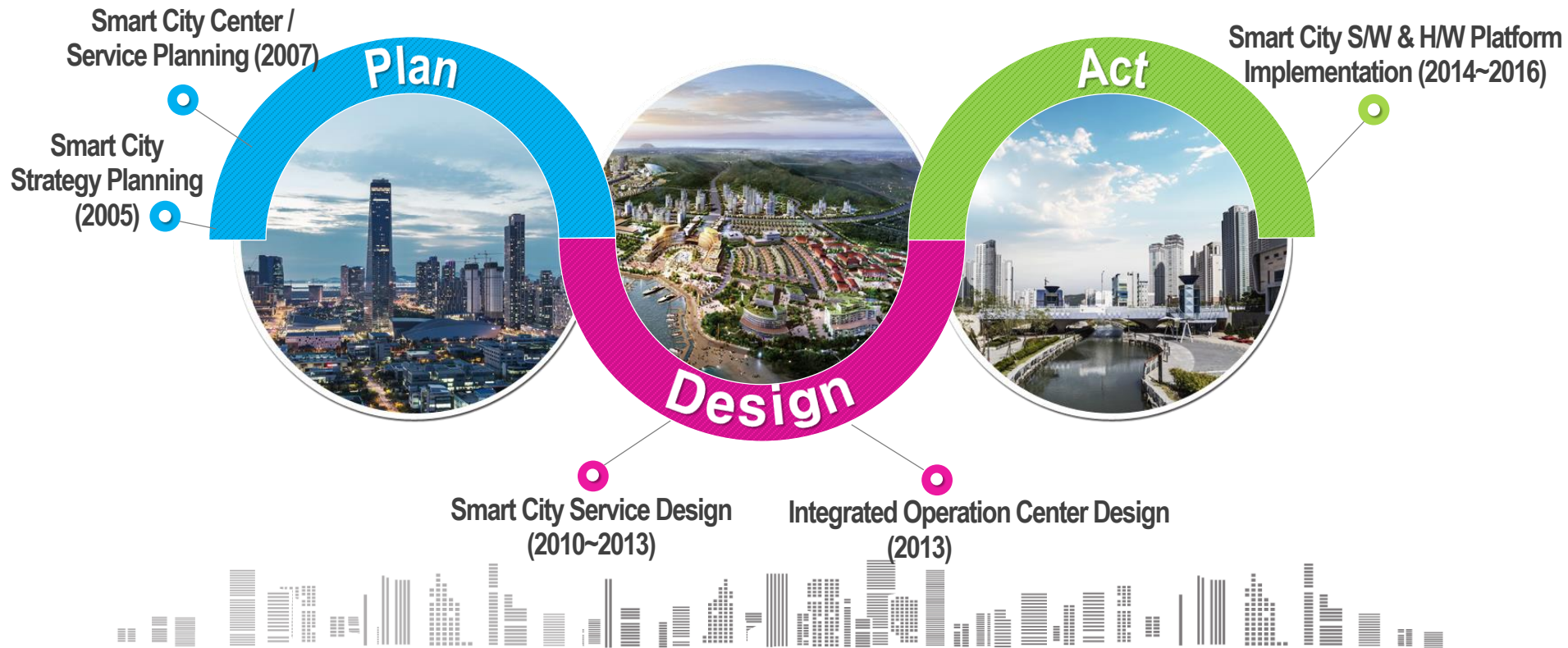
One Service



IFEZ Smart City
S/W Platform

Development Plan

“Comprehensive & Efficient Smart City”



The diagram illustrates the four stages of industrialization, each represented by a numbered icon and a descriptive label:

- 1st**: Mechanization, water power, steam power. The icon shows a person operating a large steam engine.
- 2nd**: Mass production, assembly line, electricity. The icon shows two people working on a car on an assembly line.
- 3rd**: Computer and automation. The icon shows a person working at a computer terminal.
- 4th**: Cyber physical system. The icon shows a person interacting with a large orange robotic arm.

Below these stages, a network of orange lines connects various icons representing modern industrial and technological elements: a robotic arm, a computer monitor displaying charts, a house with Wi-Fi signals, a server rack, and a stylized sun or wave.

2003~2009

- Establishment of information strategy
- Construction of communications infra

Implementation of Smart-City Service

2010~2016

- Progression of 3-Areas Smart-City project
- Integration of Smart City in 3-Areas into one IFEZ Smart City

Upgrading the Smart-City & Expanding new services

2017~2022

- **Advancement of IFEZ Smart-City Platform**
- **Development of new Smart-City Services**
(with IoT, Big-data skills & Cloud technique)



Services

“Integrational & Equivalent Smart City”



Public Service



U-Traffic



U-Crime Prevention



U-Facility



U-Disaster



U-Green



U-Traffic Facility

Private Service



U-Home



U-Store



U-Education



U-Building

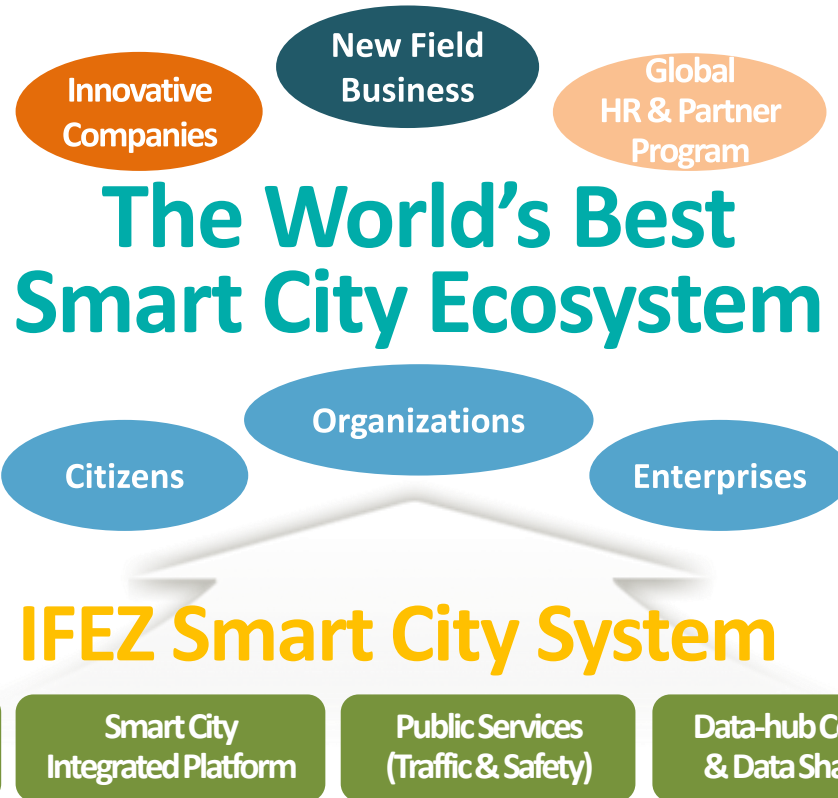


U-Healthcare



U-Office

Smart City Expected Effects



Characteristic of IFEZ SMART CITY

Why?

Planning

**Smart-City
Concept**



How?

Execution

**Smart-City
Platform**



What?

Benefit

**Smart-City
Service**



The city of the future
that you've been dreaming
And waiting for, Already exists,
IFEZ Smart City

