

Issues and Implications of Incheon's Sustainable City Policy on New Urban Agenda

11 February 2018

Cho, Kyeong Doo

**Director General, Incheon Climate & Environment Research Center
Senior Research Fellow, Incheon Development Institute**



Present Incheon



A world map with a light blue background. The landmasses are shown in a darker blue. A red dot is placed in East Asia, representing Incheon. Concentric circles radiate from this dot. Lines connect the red dot to the 'Population', 'Area', 'GRDP', and 'Financial Scale' data blocks on the right. The word 'INCHEON' is written in large, bold, blue capital letters inside a white rectangular box that is positioned over the red dot. The map is labeled with 'Europe', 'Middle East', 'Africa', 'Asia', and 'Oceania' in white text.

INCHEON

Population 3,008,552
(5.7% out of the national population)

Area 1,063km² (168 islands, 689 km²)

GRDP 75.67 trillion won
(4.8% out of the national GRDP)

Financial Scale 9.2 trillion won (2017)

Marine City of the Islands and Seas

- 🌐 **City with marine history of thousands of years**
 - Maritime history as the trading base of the Three Kingdoms period
 - World's Top 5 tideland including Songdo & Ganghwa South tideland
- 🌐 **168 Treasure Islands**
 - 40 inhabited islands including Ganghwa and Ongjin, 128 uninhabited islands
 - Seonjae Island selected by CNN as the most beautiful island in Korea
 - Paradise for rare animals and plants such as spotted seals in Baengnyeong Island

Marine City, Incheon



Logistic Hub with Airport and Seaport

- 🌐 **Incheon International Airport, a hub in Northeast Asia**
 - Ranked 2nd International freight, 8th International Passengers
 - Ranked 1st, the world's best service for consecutive 11 years

- 🌐 **Incheon Port, the biggest port in the west coast**
 - An advanced export base of Korea after opening the port
 - The biggest trading port of the west coast in the capital area and central district

Logistics Hub City, Incheon



IFEZ(Songdo, Cheongna, Yeongjong)

Free Economic Zone, Incheon

Direction of the development

- Business environment for foreign investment companies
- Education, medical facilities, MICE, IT
- Settlement conditions of International city
- Project period: 2003-2022

Expected population: 539,373 (current 275,302)

Expense for foundation: 40.5 trillion KRW



Integrated Smart Platform

- Transportation, Crime & Disaster prevention, Environment & Facility management, etc.
- Offering the best public service in Korea



- Hosting the most UN organizations in Korea
 - 11 UN organizations, 4 international organizations
 - **Green Climate Fund**, a center of green growth
 - Established international organizations cluster in the base of G-Tower

- International city with citizen participation
 - Composition & operation of international organizations partnership
 - Operational support for international organizations, Internship program
 - Communication Program for local communities
 - Lecture by visiting mentors in schools, English speech contest



'Forest of Hope' in Mongolia

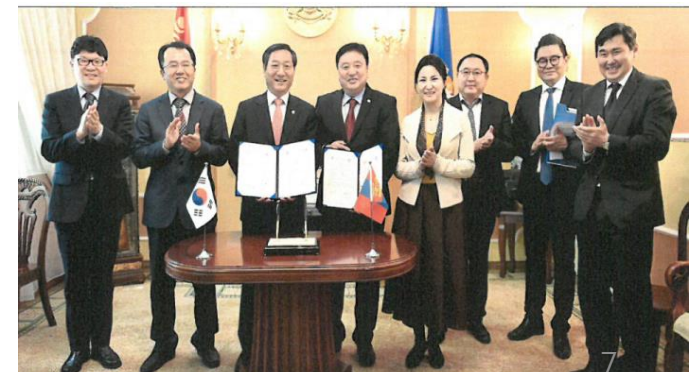
🌐 Incheon-Mongolia, 'Forest of Hope' (10th Anniversary)

- 2008-2017, Mongolia (Bayannuur sum, Dashinchilen)
- 'Forest of Hope'(ODA International Cooperation Project) : 72ha, 97,000 trees



🌐 Incheon-Ulaanbaatar Sisterhood relationship (2017. 5)

- 'Forest of Hope' in Ulaanbaatar
- Economic cooperation in agriculture sector



Local Agenda and Sustainability Report

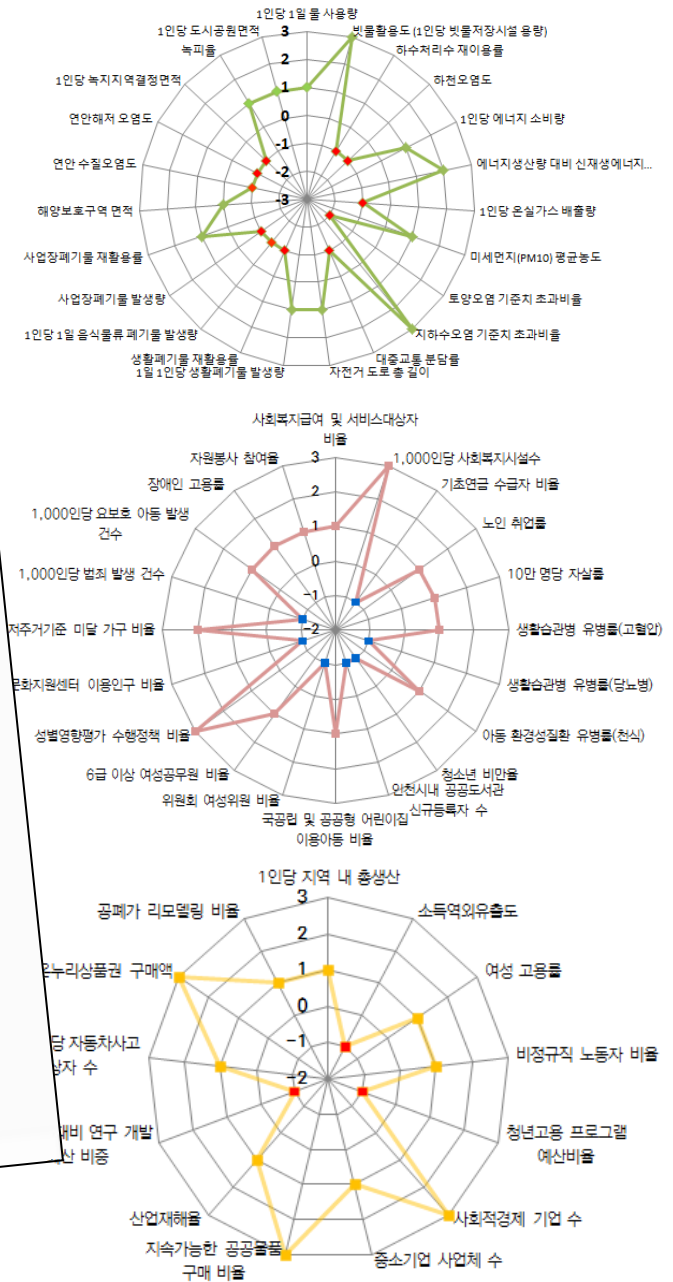
Incheon's environmental problems

- related to port & heavy vehicles as well as power plants & industrial complex that interconnect with local industries and residents.
- cannot make any significant performance over the whole city, if the works and achievements are just made at a residential, public & commercial sector.

Incheon Sustainability Report

- establish and practice the Local Agenda, which is based on the local community involvement
- make a Sustainability Report mainly focused on Sustainability Index.
- recently completed the New Sustainability Report, after 2012 Sustainability Report in accordance with GRI standards.

Incheon Sustainability Report



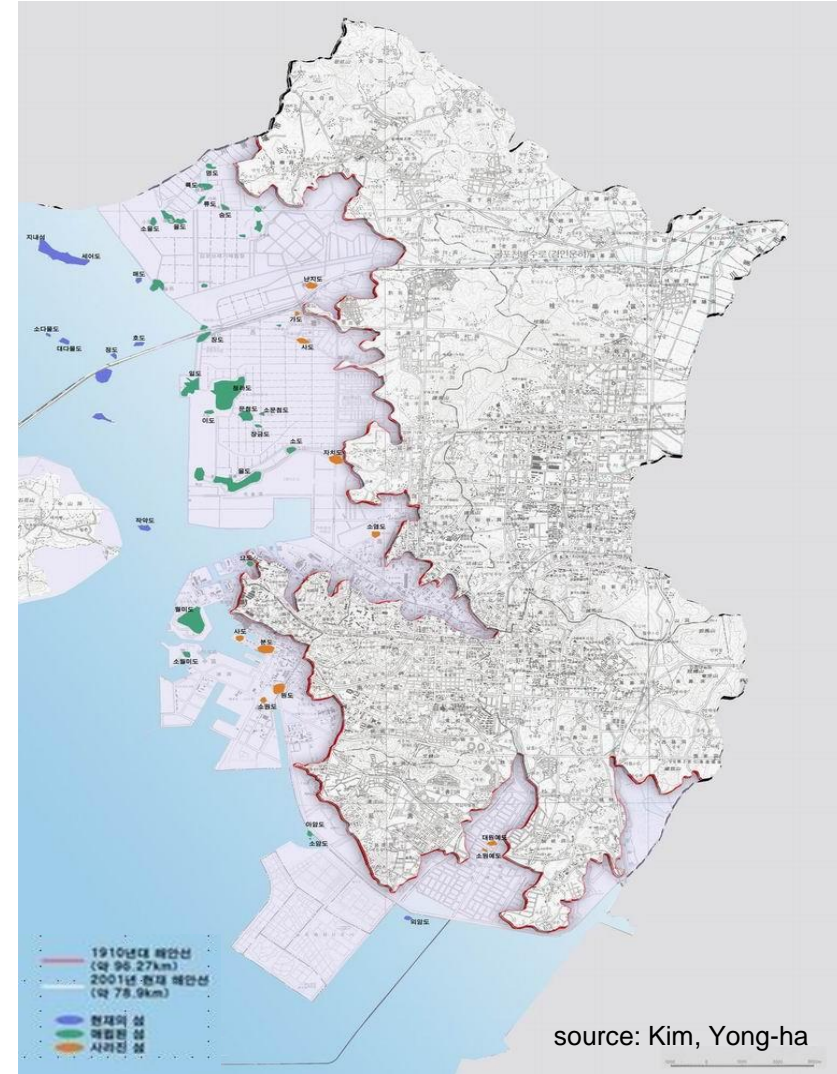
Incheon's recent Dilemma (1)

🌐 Eco-Green Conflicts

- preparation of a tidal power plant for reducing greenhouse gases
- negative effects of natural environment and worries about residents' living

🌐 Linking an island to the land

- positive effects by improving accessibility to land, quality of residential life
- Negative perspective, such as destroying traditional history, culture, environment and local community of the island



Incheon's recent Dilemma (2)

🌐 Invasion of 'Right to the City'

- most of the environmental assets are the historical & cultural resources
- eco-tourism requires some infrastructure such as roads & bridges
- often ends up with commercialization and profitable businesses for specific people



Calibration of Imbalances : Inclusive Growth

Imbalance between central and local government

- Incheon asked for environmental independency
- announced the corresponding policies

Imbalance of responsibility for local issues

- main facilities are both the basis of local economy & the cause providers of environmental problems
- important to form a sound partnership between stakeholder & key facilities
- preparing the community cooperation based on social responsibility.

Calibration of Imbalances : Inclusive Growth

Imbalance between policy and technology

- expand our policy governance and its supporting knowledge network, in order to narrow down the gap between policy and technology
- note that many social and environmental problems in the city were the boomerang of scientific technology and industrial innovation to facilitate human life and increase economic utility

Spatial Imbalance within the city

- conflicts has been deepened moreover in terms of the regional imbalances between old downtown and new Free Economic Zone, or even within the city.

Greening the Highway through the City



①	인천기점	인천의 미래를 여는 공간
②	인하대	꿈을 실현하는 문화예술 공간
③	수봉	가족이 함께 찾고 싶은 공간
④	도화·주안	문화·상업의 동반성장공간
⑤	인천교	4차 산업혁명의 미래혁신공간
⑥	가좌	생활문화와 산업이 교류하는 창조공간
⑦	원적	여성이 행복하고 안전한 힐링공간
⑧	석남	더블역세권의 지역성장공간
⑨	가정	전통시장·북카페 특화공간



Create a park & open space
for local communication & cultural exchange

Conclusion : Resilience & Sustainability

Transitional City Policies connecting with Sustainability

- many advanced cities where population increases stop, have tried to pursue the qualitative improvement and happiness of their inhabitants
- proceed to Transitional City Policies connecting with Sustainability Policy

Incheon's Growing Pains & Responsibility

- Incheon will be about to experience the peak population about ten years later
- population has been growing at the fastest rate in Korea until recently
- Incheon suffers from growing pains and the imbalance problems
- also have a responsibility to form a multi-cultural communities for many foreigners who live and visit in Incheon



Thank You!