



Together

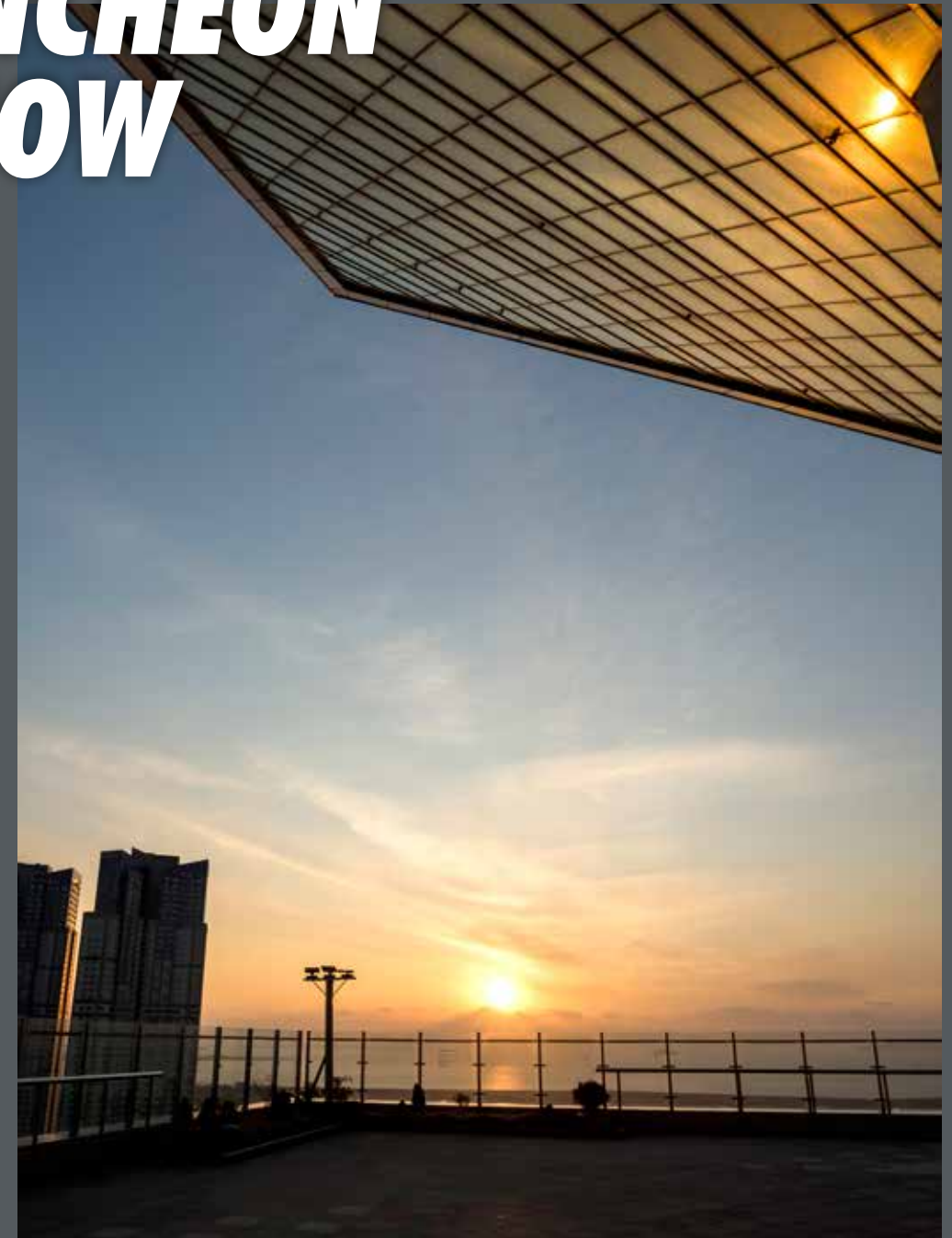
Tomorrow in Incheon.

we are one

Incheon, the city you want to
live in and build a future together

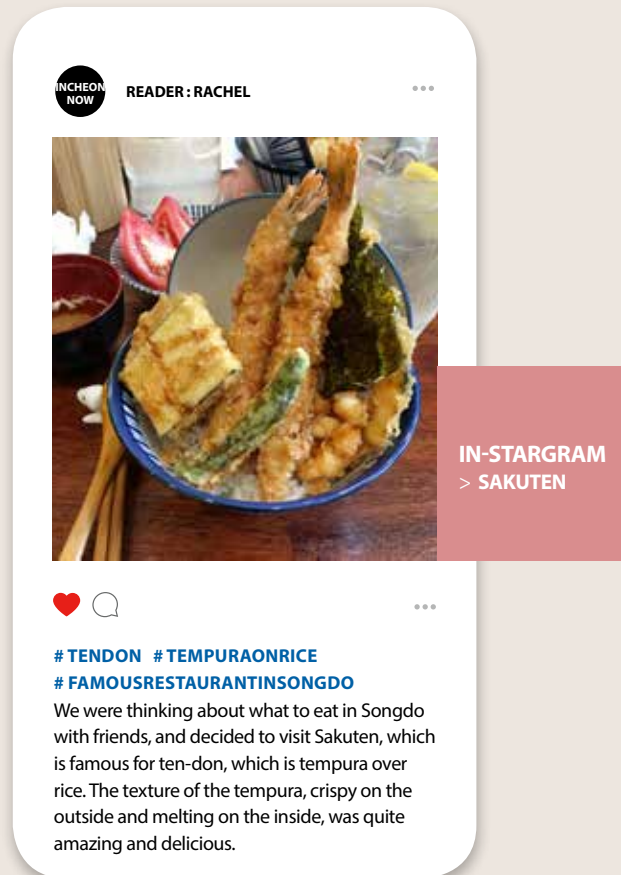
2019 WINTER

INCHEON NOW



THE NEW YEAR, 2020, HAS DAWNED. WE WISH THAT ALL THE TIME YOU
SPEND IN INCHEON TURNS TO HAPPINESS EVERY STEP OF THE WAY.
(VIEW OF THE SUNSET FROM G-TOWER SKY PARK)

Vol. **60**



SAKUTEN

This place specializes in ten-don and is located in an area with an excellent atmosphere. It is recommended for couples, families, and friends to enjoy a meal. The menu includes Sakuten-don, Ebiten-don, Anagoten-don, and Special Ten-don. All you have to do is choose your favorite tempura dish.

Hours 11:30 - 20:30 / Break Time 14:30 - 17:00 / Closed on Mondays

Address 116, Convensia-daero, Yeonsu-gu, Incheon

+ Gift vouchers will be given to those whose journals are chosen.

How to apply Send us your photos relevant to the theme as well as a short description via email.

Where to send goodvoice@korea.kr

CONTENTS

2019 winter Vol. 60

- | | |
|--|--|
| <p>04 TREND ISSUE
Comfortable and Free Networking :
Green Drinks Songdo (GDS)</p> <p>08 SPECIAL THEME
Space for Global Culture and
Arts Art Center Incheon</p> <p>12 INCHEON TALK
Adieu 2019
Sunrise and Sunset
Attractions in Incheon</p> <p>16 ATTRACTIVE PLACE
The Hot Spot that Embraces the Sea!
Combined Cultural Space in Songdo,
'Caisson 24'</p> <p>18 TRADITION
Traditional Art Carved on Ox Horn
National Intangible Cultural Heritage
No. 109 Hwagakjang (Ox Horn Inlaying)</p> | <p>24 TOGETHER
Korea, a Dear Place of
Finding True Love</p> <p>28 WELCOME
Celebrating the Opening
of Wolmi Sea Train</p> <p>32 CULTURE
Let's Enjoy
Winter to the Fullest!</p> <p>34 NEWS
This month's city hot news</p> <p>36 REAL LIFE
Good luck!
JOBKOREA</p> <p>38 INFORMATION
Statistical information on Incheon</p> |
|--|--|

Publisher by Incheon Metropolitan City Publisher Mayor of Incheon Metropolitan City Editor-in-Chief Dong-hoon Shin
Team Manager Jin-kuk Kim Planning & Editing Yoon-gyeong Kim Tel +82-32-440-8304 Website www.incheon.go.kr
E-mail goodvoice@korea.kr Design & Print Westco Tel +82-32-423-1988

Comfortable and Free Networking : Green Drinks Songdo (GDS)

COMMUNITY GREEN DRINKS SONGDO (GDS)

What would you need or miss the most when you live in a foreign country? It must be a community with people. It would not be so lonely or distressful if you can talk to someone else comfortably and freely, understanding each other living in a foreign country and even helping each other. Also, it would be more so if there is a place to share conversation and ideas on familiar topics and sympathize with one another. There is a community in Songdo, Incheon that started with such wishes. It is called the 'Green Drinks Songdo.'



→ GREEN

DRINKS



Many foreigners and their families live in Songdo International City in Incheon. Although they had had the desire for their own community, it was not easy to start one.

But in February 2019, Alberto G Perera from Spain, who is in the doctoral program at Incheon National University, finally started a meaningful gathering. The name of the meeting is 'Green Drinks Songdo (GDS).'

'Green Drinks' is an informal networking event where eco-friendly people meet casually, drinking simple beverages. 'Green Drinks' began in London in 1989, and now it is continued in many countries.

"At the beginning of 2019, at the office party held in commemoration of the New Year's Day at the EAAFP Secretariat in Songdo, those who are concerned with environment gathered together and discussed how to strengthen the networks of individuals who are interested in the newly constructed urban environment of Songdo. At the party, people from various countries shared their experiences in each country, and some of them realized that they had previously participated in green drinks in different parts of the world. After sharing some wine, we decided to start "Green Drinks songdo."

Alberto, who desperately wanted a



SONGDO

community, gathered many people and started the "Green Drinks songdo" in February 2019, and it had its first meeting in April.

It started as a non-profit organization with no membership fees and no particular formalities, or merely a comfortable gathering, but more and more people are joining the community as people began to share their thoughts on the environment. Currently, GDS aims to become an open but intellectually charming platform for both foreigners in Korea and international residents of Songdo to meet and learn from each other. Besides, GDS is gathering people with diverse backgrounds and those who are willing to get involved with and discuss environmental issues and challenges and wishes to grow into a perfect 'casual networking platform' that encourages free discussions with people who care about eco-friendliness and sustainability without reserve. Currently, UN organizations in Songdo International City, GCF Secretariat, IGC, and professors of Incheon National University are participating in the community, and the community looks forward to the communication with various leaders of Incheon, including the Mayor.

"Green Drinks does not force anyone. It sells nothing, and no one comes here to find a job. It is just someplace that people feel free to come. I think it's great to mix with various people to share ideas and discuss things. In Korea, there are many cases where you need to meet specific conditions and require an invitation, but we are not like that. Anyone can come. It's open to all and everyone is welcome."



GREEN DRINKS SONGDO

<ORGANIZING TEAM MEMBERS & STATEMENTS>



**Solongo
Khurelbaatar**
(Mongolia)

GCF : "GDS aims to be an informal, but intellectually vibrant platform to give both local Koreans and international residents of Songdo opportunities to meet each other and learn from each other. We do that by having a mix of both Korean and international speakers. Our audience is also a mix of locals and expats and we intend to keep both our audience and speakers as diverse as possible."



Vivian Fu
(Hong Kong)

EAAFP : "As a foreigner here, even though Songdo was established as an international city and there are lots of expats from different parts of the world, we need something to draw people with like minds together. GDS can be such platform for sharing issues about the environment in any aspects. It also helps to build up network for people who think alike, work in this field or even just interested in the 'green-related' topics".



**Alberto
G Perera**
(Spain)

INU : "As a new urban development built from scratch, Songdo needs strong references to remark its identity. I believe its people is one of the greatest assets this place has, and GDS helps connecting the dots between individuals with diverse expertise in an open platform, to raise environmental awareness and increase community engagement."



**Sara
Bennouna**
(Morocco)

UNESCAP : "GDS brings together people from various backgrounds and with different stories who are all willing to engage and discuss environmental topics and challenges. Every month, this gathering provides a platform for sharing experiences and expertise, from both speakers and participants :) all in a very open and casual atmosphere."



Qian Cheng
(China)

UNESCAP : "GDS has brought new vibrance to life in Songdo. It's a community of open-mindedness that unveils the human-stories behind big issues we all care about."



Hyeseon Do
(Korea)

EAAFP : "GDS holds a monthly gathering at a good local restaurant and bar with a short inspiring guest talk. A perfect casual networking platform with people in Songdo who care about green and sustainability! Join us."

f facebook Green Drinks Songdo(GDS) : <https://www.facebook.com/GreenDrinksSongdo>

This year, Art Center Incheon is celebrating its first anniversary. Over 40 performances have been held in the past year meeting the expectations of classical enthusiasts. This section introduces the steps that the art center took and the steps to be taken in order to become a global classic cultural space that represents Korea.

The 1st Anniversary Review - Achievements and Plans



Space for Global Culture and Arts Art Center Incheon

Art Center Incheon, The Beginning

Art Center Incheon was established with the goal of becoming a world-renowned cultural and arts space and to expand opportunities for citizens to enjoy high-quality classical performances. It is the third-largest classical theater in Korea following the Seoul Arts Center and Lotte Concert Hall, and it employed the world's best design methods.

The concert hall is completely curved so that you will not feel an acoustic deviation no matter where you seat. The walls of the wave-form ceiling vary in thickness and materials depending on the distance from the stage, and the backrests of each seat are also different. The acoustic design with side wall reflection effect and internal/external noise and vibration isolation facility can deliver even the finest of sounds, thus realizing the world-class sound. Bright colors were applied to the overall surface of the concert hall so that the audience can focus on listening rather than seeing.

Art Center Incheon also takes pride in its surroundings. Located on the northwestern seaside of Songdo with an ocean view, Art Center Incheon's unique exterior was inspired by the shape of the hand of a maestro. Since its opening, many additional transportation routes have been developed to improve access for more citizens. Art Center Incheon has completed its preparation to become a landmark of Incheon when it opened.



A Year Full of World's Best Stages

The high-quality performances of Art Center Incheon were presented to people starting with the opening performance of the Italy's prestigious Santa Cecilia Orchestra and the world-class pianist Sungjin Cho, followed by special concerts by world-renowned classical musicians such as the recital of Hilary Hahn, who is referred to as the empress of violin, performance by Dresden Philharmonic & Julia Fischer showcasing the essence of the German classics, <La Creation> by La Fura dels Baus, the performance by Philadelphia Orchestra & Cho Sungjin, and English Concert & Sumi Jo. It also held special performances for audiences of various age groups such as the Kids Classic <Pink Pong Classic Country>, and <Flying Symphony>. Such efforts of Art Center Incheon were in line with the purpose of its establishment, 'expanding the opportunity to access high-quality classical performances for citizens.'



Art Center Incheon's Tomorrow, Closer to People

Art Center Incheon presented world-class artists' performances, pleasing classical enthusiasts over the past year, as well as casual classical performances that the general public can enjoyed. There are a total of 40 various performances scheduled in the future. Art Center Incheon is planning to hold more than 60 performances a year starting next year. Open house concerts and concerts performing a series of popular repertoires will also be planned to reduce the psychological distance between the audience and classical theaters. Art Center Incheon, which will showcase various forms of classics to the public without any filtration, will please our eyes and ears as a global culture and arts space.



December Schedule

- + TUESDAY DECEMBER 3, 19:30**
The Family - The 8th Regular Concert and Year-end Concert of BeHa Philharmonic Orchestra
- + SUNDAY DECEMBER 8, 17:00**
Munich Symphony Orchestra Korea Concert
- + FRIDAY DECEMBER 13, 20:00**
- + SATURDAY DECEMBER 14, 17:00**
Concert Opera <La Boheme>
- + FRIDAY DECEMBER 27, 20:00**
Youn Sun Nah Christmas Concert



Adieu 2019

Sunrise and Sunset Attractions in Incheon

The sunset that marks the end of the day and the sunrise that signifies the beginning of the day seem to have more meaning toward the end of the year. Let's show gratitude for the passing year to the setting sun and wish a year full of hope with the rising sun. You don't even need to go far because Incheon has a variety of sunrise and sunset attractions that will provide unforgettable memories.

SUNRISE SPOT

Geojampo Port

Gyeyangsan Mountain

SUNSET SPOT

G-Tower Sky Park

Bukseong Port

Jeongseojin

Sunrise Spot

Geojampo Port

Geojampo Port of Yeongjongdo Island, one of the best sunrise spots in Incheon, is a place that many tourists come to enjoy the view of the rising sun with two uninhabited islands in front of the port, Maerangdo and Sajeoldo, as the backdrop. The forest of pine trees standing in a row along the shore like folding screens blend into the scene of Geojampo Dock, creating a unique atmosphere. The small island that can be seen from the shore, Maedorang Island, is also called "Shark Island" for it resembles a shark's fin, and many photographers come to capture the sun rising behind the island.



2

Gyeyangsan Mountain

Gyeyangsan, which is 395m tall, is the highest mountain in Incheon aside from Ganghwado Island. It is also famous for the view of the sunrise that Incheon is proud of and is frequented by many visitors from both inside and outside of Incheon. Almost all of the areas of Incheon, as well as celebrated mountains in the vicinity such as Bukhansan Mountain and Manisan Mountain, can be seen from here. Gyeyangsan Fortress site is located halfway up Gyeyangsan Mountain, and there is a pavilion with a hexagonal roof standing in front of it. Along with the summit of Gyeyangsan Mountain, many people come here to make wishes for the New Year while looking onto the sunrise.



Geojampo Port

Address 11, Jamjindo-gil, Jung-gu

Gyeyangsan Mountain

Address Gyesan-dong, Gyeyang-gu, Incheon

1 View of sunset from Gyeyangsan Mountain

2 People photographing the sunrise at Geojampo Port



12 13

1



G-Tower

Address 175, Artcenter-daero, Yeonsu-gu

Nearby Attraction

Tri Bowl, Central Park, Convensia, Incheon Urban History Museum, Hanok Village

Following Word-of-Mouth to Bukseong Port, Jung-gu

Recently, amateur photographers that want to capture the sunset on the West Coast and factories in a single frame are flocking into the port like sparrow flying to a mill. The combination of the factory area, which is in the faraway backdrop, and the sunset adds a wonderful touch to the quiet Bukseong Port that has kept things from the past. The fact that the place has become popular among photographers is more than enough to prove that this is a special place to enjoy the sunset.

G-Tower

This is the heart of the international city where international organizations such as the Incheon Free Economic Zone Authority, GCF (Green Climate Fund), and the United Nations are located. The IFEZ PR Center and the outdoor Sky Garden on the 29th floor, which is considered as the best observation spot in Songdo International City, are must-visit places when visiting G-Tower. The nightscape of Central Park, the landmark of Songdo International City, combined with the sunset is quite fantastic.

The IFEZ PR Center, located on the 33rd floor of G-Tower, is an exhibition hall where you can see the past, present and future of IFEZ (Incheon Free Economic Zone). It is equipped with advanced exhibition facilities such as those showing IFEZ's development process and plan and project progress, three-sided media video show, and simulation experience to help visitors better understand IFEZ. Another attraction is the observatory that has all four sides of the building constructed entirely with glass to offer visitors a panoramic view of Songdo International City.



Sunset Spot



3 View of sunset from G-Tower Sky Park

4, 5 Sunset Bell and Park at Jeongseojin with Sunset

6 View of sunset from Bukseong Port

Western End where 'Sunset Bell' Rings, Jeongseojin, Seo-gu

If there is Jeongdongjin in the East Sea, there is Jeongseojin in Incheon. This is the western end of the latitudinal line extended from Gwanghwamun Gate, the end of the land and a stop for ferries. Geographically, it is the western end of Korea's land, and it is a great spot to see the sunset that marks the end of the day. They say the place is more than enough to make memories.

Jeongseojin, famous for its beautiful sunset, is also the starting point for Gyeongin Ara Waterway. The beautiful surrounding landscape is attractive indeed, yet the emotional contents that add romance to the trip such as charming sculptures, sunset wall, and a sea piano double the pleasure.



Bukseong Port

Address 49, Bukseongpo-gil, Jung-gu, Incheon

Nearby Attraction

Chinatown, Fairy Tale Village, Wolmido Island

Jeongseojin

Address Jeongseojin Plaza, Ara Incheon Terminal, Gyeongin Ara Waterway, Seo-gu

Nearby Attraction

Gyeongin Ara Waterway, Jeongseojin Artcube

THE HOT SPOT THAT EMBRACES THE SEA!

COMBINED CULTURAL SPACE IN SONGDO, 'CAISSON 24'

The place to enjoy culture with a view of the endless silvery sea and the sunset with the tint of wine. The sensible cultural zone to feel with the heart and communicate through all five senses. This is the combined cultural space, 'Caisson 24.' Let's take a look at the place that has already become a hot spot among foreigners and citizens.



Global Romantic Space Satisfying All Five Senses

In the Italian restaurant on the second floor, which offers craft beer and dishes prepared by professional chefs, you can enjoy the impressive moment with the beautiful glow of the sun setting over the West Sea across the huge window.

'Caisson 24' is crowded with people who come to enjoy the freedom of the spatial culture to the fullest such as those who came to enjoy a meal with family or lover, those who enjoy chatting with friends over the tea, and those who appreciate the view of the sunset at the outdoor observation deck.

The darkness gradually fell after the beautiful glow of the sun subsided, but people continued to come to enjoy the romantic night culture.

"I hope it becomes a relaxing place that relieves domestic guests as well as foreign guests. I especially hope that it becomes a community space in Songdo that visitors would remember while waiting many hours for their flight during their transit at Incheon International Airport," wished President Heo.

Art & Culture Platform

The name, 'Caisson 24', was coined by combining the smart caisson method and the 24th park.

It is a free space developed with the hope that it will become a space for cultural communication for both domestic and foreign visitors. "Located in the Incheon Bridge Workings Plaza of which the foundation was constructed with the caisson method, 'Caisson 24', reflects the hope to become a cultural platform of Songdo International City as if it tells a variety of stories of the largest bridge completed by man's wisdom and passion. I hope it becomes a smart, creative, and productive community space in the midst of the flood of various cultures," said president Seungryang Heo (Songdo-dong, Yeonsu-gu) while introducing 'Caisson 24'.

'Thrill, courage, and touch' are the keywords that this space pursues. At the 'Culture Museum', where there are concerts, performance is a daily event and romance fills the air, visitors can enjoy music videos and free movies at 6 p.m. every night.

Building A and B are designed to host various performances, exhibitions, and parties. The two silvery buildings stretch up their rectangular bodies as though they wish to reach the sky. The indoor space, as exotic as the unique exterior design, has a range of new cultural spaces for various uses where different cultures and arts coexist such as cafeteria, tea cafe, music box, an Italian restaurant that offers craft beer, gallery, culture museum, party room, photo studio, and rooftop.

<'Caisson 24' Information>

+ LOCATION

20, Convensia-daero, 391-beongil, Yeonsu-gu

+ HOURS

9:00-24:00, (Closed on Mondays), Cafe is open all year round

+ INFORMATION

032-832-3204

Cultural Space



Traditional Art Carved on Ox Horn

NATIONAL INTANGIBLE CULTURAL HERITAGE NO. 109 HWAGAKJANG (OX HORN INLAYING)

Hwagak craft, or ox horn inlaying, is a unique art of Korea. Its history has not been known in detail and its future seems opaque. To that end, Jaeman Lee, the only national intangible cultural heritage for ox horn inlaying, is constantly striving to spread and preserve this unique art. Let's take a look at its history and also examine Lee's efforts to secure its legacy in the future.

쇠뿔 속에 새긴 전통예술

국가무형문화재 제109호 이재만 화각장

한국만의 고유한 예술인 화각공예는 그 역사가 자세히 알려진 바 없고, 미래 또한 불투명하다. 그렇기에 유일한 화각공예 국가무형문화재인 이재만 선생은 끊임없이 화각의 전파와 보존에 힘쓰고 있다. 화각의 역사를 현대로 잇고, 새로운 혼을 훗날에 남기기 위한 그의 노력을 살펴보자.

+ What is Ox Horn Inlaying?

Ox horn inlaying is a type of art accomplished by drawing on thinly processed ox horn and attaching it to ornaments and furniture. Until the introduction of glass crafts, the method of grinding the ox horn thinly was the best way to obtain the most transparent material, which is perfect for expressing the color of the painting. This has resulted in the development of ox horn inlaying, which used high quality ox horn into a thin and elaborate piece of work such as ornaments for women, furniture, and woodenware.

The professional with this skill was called Hwagakjang (ox horn inlaying master), who had to master five skills: excellent painting skills as the basic requirement, the technique of thinly processing the ox horn, the technique of making woodenware, the technique of lacquer, and the art of making ornaments. As ox horn inlaying is completed through such difficult and elaborate processes, it was a traditional high-end craft of Korea that was used only in the royal family since long ago.

However, the history of ox horn inlaying has not been known in detail. This is because the ox horn inlaying works are made of organic horns and easily decay, and they were mostly buried with the deceased and went on with the decaying process. This led to no excavation of related relics from the period before the 18th century. Still, however, with the discovery of several works from the 18th century and later, we could only assume that the history of ox horn inlaying started roughly around that period.



+ 화각공예란 무엇인가

화각(華角)은 얇게 가공한 쇠뿔에 그림을 그려 장식품이나 가구 등에 붙여서 표현하는 예술의 일종이다. 유리공예가 도입되기 이전까지는 쇠뿔을 얇게 갈아내 활용하는 방식이 가장 투명도가 높아 그림의 색감을 표현하기 좋았다. 이로 인해 질 좋은 소의 뿔을 활용해 얇고 정교하게 다듬어 여성들의 장식품이나, 가구, 목기 등을 만드는 화각공예가 발달했다. 이 기술을 지닌 전문인을 화각장(華角匠)이라 불렀는데, 화각장은 다섯 가지 기술을 숙달해야 했다. 뛰어난 그림 실력을 기본으로, 쇠뿔을 얇게 가공하는 기술, 목기를 짜는 기술, 옷질하는 기술, 그리고 장식을 만들어 붙이는 기술이었다. 이처럼 화각공예는 까다롭고 정교한 과정을 거쳐 완성되는 작품이었기에 예부터 왕실에서만 사용된 우리나라 전통의 고급 공예였다. 그러나 화각공예의 역사는 구체적으로 밝혀진 것이 없다. 유기물인 쇠뿔로 이루어진 화각공예품은 사소한 사용자와 함께 매장되는 등으로 인해 쉽게 부패되어 18세기 이전의 유물이 발견되지 않기 때문이다. 다만 18세기 이후 작품들이 몇 발견됨으로써 화각공예의 역사는 대략 그 이전 즈음일 것이라고 추측하는 정도다.



+ Maintaining the Soul of the Craft

The reason ox horn inlaying techniques could be handed down so far is that Mr. Jaeman Lee, who was trained under Ms. Ilcheon Eum, the preceding ox horn inlaying master, has been active as the holder of the National Intangible Cultural Heritage No. 109 Hwagakjang (ox horn inlaying). In fact, he is now the world's one and only authority as a master of ox horn inlaying. He started this art in 1964 and has been handling ox horns for 55 years.

After years of experience in this art, he has long been accustomed to his work, but he still works slow. This is because of his belief that there is no fast way in the art that creates beauty. This is a warning and reflection that reminds him of the days when he focused on production for a living rather than creation. The ox horn inlaying consists of a complete creation process from basic design to processing. You can't let your hands do their job for being familiar with the process because it is the work of creating a unique work that would exist as a one-of-a-kind in the world each time you create one. The impatient young craftsman now became a mature artist with composure and elegance.

As he gained wisdom, his horizons became deeper and wider. He began to have concerns about the role of an artisan and how to preserve traditional Korean culture. As a result, he has been working on the restoration of artifacts for more than a decade. It started with the sense of responsibility for organizing what we have and to pass them on to the next generation, and it is about duplicating the old and faded artifacts and preserve them like new ones.



+ 화각의 혼을 이어받다

화각공예 기술이 지금까지 전승될 수 있었던 이유는 선대 화각장 음일천 선생에게서 기술을 전수받은 이재만 선생이 국가무형문화재 제109호 화각장 기능보유자로 활동하고 있는 덕분이다. 사실상 그는 현재 세계 유일이자 제일의 화각공예 권위자로, 1964년도에 화각공예를 시작해 올해로 55년째 쇠뿔을 다듬고 있다.

수십 년을 연마해온 내공으로 이제는 작품 활동에 익숙해졌을 만도 한데, 그의 작업 속도는 여전히 예전처럼 더디다. 아름다움을 창조해내는 예술에 있어 빠른 길은 없다는 그의 지론 때문이다. 이는 그가 젊은 시절, 한때 생계를 위해 창작보단 생산에 치중해 작품 활동을 했던 기억을 더듬어 남기는 경고이자 반성이기도 하다. 화각은 기초 도안부터 가공 등 모든 공정이 완전한 창작으로 이루어진다. 세상에 하나밖에 없는 작품을 만드는 일이기에 익숙한 과정이라는 이유로 허투루 손을 놀릴 순 없다. 이제 젊은 날의 조급했던 그는 완숙한 예술가로 성장해 여유와 품격을 갖춘 것이다.

삶에 여유가 생기니 그의 시야는 더욱 넓고 깊어졌다. 장인으로서의 역할과 함께 우리의 전통문화를 지키는 방법을 고민하게 됐다. 그 결과 그는 10여 년 전부터 화각공예 유물의 복원 작업을 진행해왔다. 우리 것을 정리해 그 흔적을 후대에 남겨야겠다는 책임감에서 시작된 일로, 오래되어 빛바랜 지난날의 유물들을 똑같이 복제해 새것처럼 보존하는 작업이다.

+ Efforts for the Future

He says the question ‘Who would leave today’s legacy to the future?’ suddenly came to his mind after restoring the works of preceding masters for about 10 years. At the same time, he also had a wish in his mind; he wanted to leave his footprints in history. It was a natural mission that the highest authority in ox horn inlaying of the times would have. As a result, Lee has currently been engaged in a new series of works to bridge the future with only ox horn crafts of modern times, which are more developed than the past. Because he can afford to concentrate on creation more deeply than ever, feeling at more ease, he says that he is now in his prime at a time in his life where he is losing physical strength. Lee also teaches his two grown sons as the initiates of ox horn inlaying. They will be succeeding Lee later on. In addition, Lee is giving lessons and open demonstrations for the general public as often as he can. This is a part of his efforts to turn around the circumstance where nobody recognizes the ox horn inlaying and less people wish to learn. He continues to provide people with opportunities to experience the art so that they would develop even an inch of interest and it would not become a neglected culture of the past. He especially focuses on education for children by getting involved directly. Because when young children learn about the charm of ox horn inlaying at an early age, they might later become customers and propagators spreading this art in the future.



TRADITION

+ 후대로 계승하는 손길

선대 장인들의 작품 복원에 힘써온 지 약 10년, 과거와 미래를 연결하는데 힘쓰는 동안 ‘그렇다면 우리의 오늘은 누가 미래에 남길까?’라는 물음이 어느 날 문득 그에게 찾아왔다. 그와 동시에 선생은 마음속에 욕심이 하나 생겼다. 역사에 자신의 발자취를 남겨야겠다는 생각이다. 공인된 현대 화각공예의 최고 권위자로서 품는 당연한 사명감이었다. 이로 인해 현재는 과거보다 발전된 현대만의 화각공예품을 만들어 미래로 연결하려는 이재만 선생의 새로운 작업이 진행 중이다. 마음에 한결 여유가 있기에 어느 때보다도 깊이 있는 창작에 전념할 수 있다는 그는 기력이 쇠해가는 요즘이 오히려 전성기라고 말한다.

이와 함께 이재만 선생은 장성한 두 아들을 화각공예의 이수자로 가르치고 있다. 훗날 선생의 뒤를 이어 화각을 계승할 인재들이다. 또한, 선생은 틈나는 대로 일반 시민들에게도 화각공예 교육과 공개 시연을 펼치는 중이다. 화각공예를 알아보는 사람도 없고, 배우려는 사람은 더 더욱 없는 분위기를 바꿔보려는 노력의 일환이다. 그는 화각공예가 소외된 문화로 남지 않도록, 조금이라도 사람들이 관심을 가질 수 있는 체험 기회를 꾸준히 제공하고 있다. 특히 그는 아이들에 대한 교육을 우선으로 삼아 직접 활동한다. 어린아이들이 일찍부터 화각공예의 매력을 알게 된다면 훗날 그 아이들이 고객이 되고 전파자가 되어 화각을 널리 알릴 것이기 때문이다.



Guide to Incheon Intangible Cultural Asset Learning Education Center

Location 599, Maesohol-ro, Michuhol-gu, Incheon

Operating Hours 09:00~18:00 / Closed on January 1, Lunar New Year's Day and Chuseok Holidays, Mondays

Admission Free

Contact 032-440-8080

KOREA, A DEAR PLACE OF FINDING TRUE LOVE

ANNA STEPHANIE

Anna Stephanie (hereinafter, 'Anna') came to Korea on Christmas, December 25, 2017. The reason she set foot on this strange land where she knew no one was because of the research she was doing.

Anna's father is American and her mother is German, and she was born and raised in Mosbach, a small town near Heidelberg in southern Germany. Anna taught at an elementary school in Germany, but she wanted to study more and majored in early childhood education. She learned about hakwon, the private educational institute in Korea while studying and came to Korea to study about it.

She loved traveling and so she got a working holiday visa, and worked and studied in Korea. Anna is tall and pretty, modeling as a part-time job, and also taught children. Thanks to this, she was able to finish her studies in March of this year.

She originally came to Korea for her research study, but Anna found a huge unexpected gift in life, her husband, apart from achieving her original purpose to complete her thesis. Her husband Il-sun Hwang, who works as a teacher at a hakwon, met Anna and helped her with her thesis, ending up becoming her lover. They understood each other well and found many things common and they decided to get married. They have now been married for four months and are enjoying their honeymoon life.



*Anna
Stephanie*



together

COLUMBUS ANNA

Anna loves to explore the area around her. Her friends call her, 'Columbus'. It is a nickname that she got after traveling from places to places like Columbus, who went on fearless explorations, looking for an unknown continent.

She says she has a lot of time because she is taking a break until her visa is processed and she travels whenever she has the chance. Anna, who lives in Songdo, likes to walk, but she says there are some restrictions because Songdo is a metropolis. She often takes a walk to Michuhol Park near her home, but she can't go to other places without driving, so she enjoys taking short trips to Nam-gu or the old streets of Namdong-gu. Growing up in a small town where everyone knows everyone else, she prefers a friendly small town to a big city and she says she does not like

Seoul at all because it is packed with people and prices are high and it is much better to live in Incheon.

Incheon Terminal that can take her to any city whenever she wishes is one of her favorite places. Her husband, Il-sun, has too much work and is very busy, so, they don't have many chances to travel together and she thus enjoys traveling alone.

Anna is sociable and active and she cherishes the relationships she has built in Korea. Anna had lived in a boarding house in Bupyeong before coming to Songdo, and she boasts of her special relationship with the landlady. Even now, she calls the landlady of the boarding house, 'Mom', gets in touch with her frequently and even visits her on big holidays such as Korean thanksgiving and Lunar New Year's Day. This is where her affable character comes out.

NEW START

Although she and her husband, Il-sun, registered their marriage and live as a married couple, they did not have a wedding. The wedding is scheduled for August next year. In addition to the wedding, Anna is preparing to start a new job, which is to prepare for a class that teaches her native language, German. There are still visa-related administrative procedures she has to complete, but she plans to open her class soon.

Anna found her love and occupation in Korea and has lived a happy life. One bad thing is that her husband is too busy, but when they have time, they enjoy playing games together and going to festivals, concerts, and movies, getting used to the newly-weds' life in Korea. There are still many things that she is clumsy about such as the Korean language, but those are just what she has to learn and master as it goes and is not a problem at all. She has nothing to be afraid of because she has her husband who will provide strong support. Dreaming of a future that the two of them can build together takes up enough of her time to worry about other things.



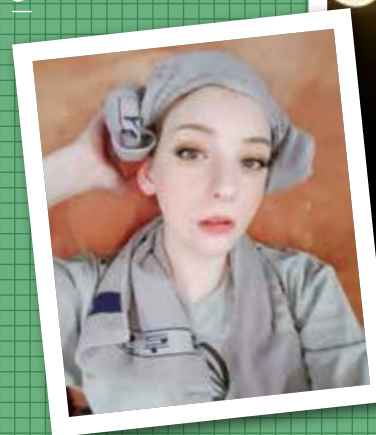
1



2

- 1 Enjoy riding in Songdo
- 2 At Jeonju Hanok Village on a warm spring day
- 3 First time to visit the dry sauna
- 4 A clip from modeling work

3



4

CELEBRATING THE OPENING OF WOLMI SEA TRAIN

Wolmi Sea Train Map

Wolmi Sea Station - Wolmi Park Station - Wolmi Culture Street Station - Museum Station

A Trip to Wolmido Island on a Train

Once again, Wolmido Island emerged as a hot place of Incheon with the recent opening of the Wolmi Sea Train, because the train, which runs across downtown and along the sea as high as 18m above the sea level, is winning great popularity for the convenience and exotic scenery it provides. To check out the fame, the editors of <Incheon Now> took a trip of Wolmido Island on the train.

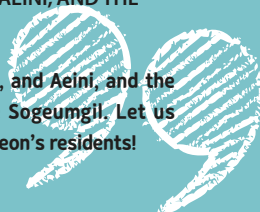


“



INCHEON'S CHARACTERS: THREE SEALS: BEOBI, KKOMI, AND AEINI, AND THE LIGHTHOUSE, DEUNGDAERI

Hello! We are Incheon's characters, three seals: Beobi, Kkomi, and Aeini, and the lighthouse, Deungdaeri! The destination this time is Sorae Sogeumgil. Let us introduce you to the place of nature, history, and the life of Incheon's residents!



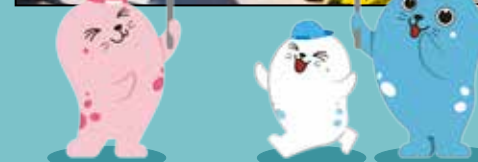
Wolmi Sea Train operates on a 6.1km long track and it takes approximately 35 minutes to go around Wolmido Island at the speed of 10km/h.



Follow the instruction from the guide stationed beside the ticketing machine at the station and enjoy the ride.



You can enjoy the view of Wolmido's natural sceneries, Incheon Inner Harbor, and the West Sea on the Wolmi Sea Train.



Wolmi Park in November is dyed in beautiful colors.

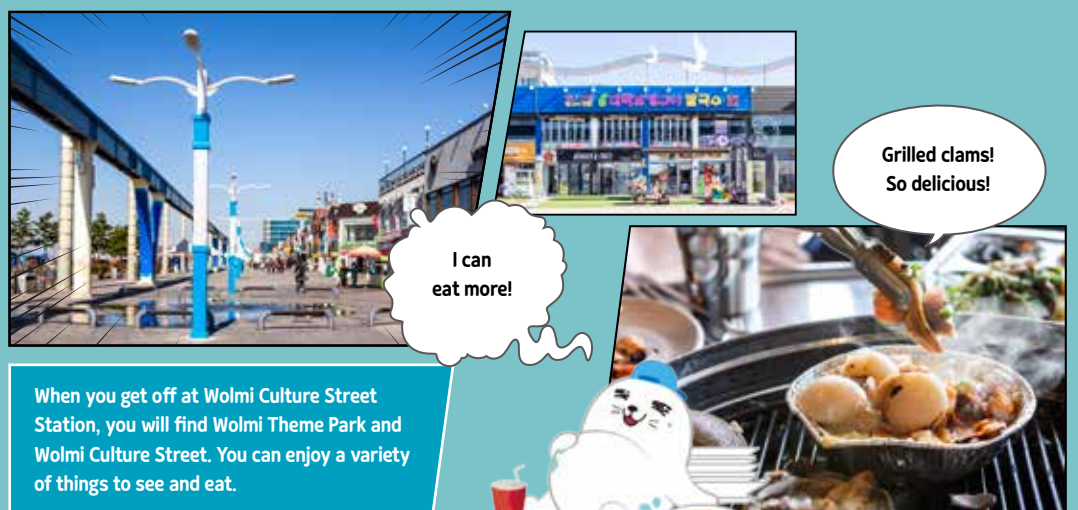


At Wolmi Observatory on the top of Wolmisan Mountain, you can enjoy the view of Incheon Port, the West Sea, and Incheon International Airport.



Take a break with a cup of warm coffee and the panoramic scenery.

The Museum of Korea Emigration History is located near the Museum Station. Here, you can feel the pioneers' life that Korean ancestors had lived overseas as presented at the museum in celebration of the 100th anniversary of emigration to Americas.



When you get off at Wolmi Culture Street Station, you will find Wolmi Theme Park and Wolmi Culture Street. You can enjoy a variety of things to see and eat.



Wolmi Sea Train Guide

Fare Information

Discounted Fare to Thank Citizens in Commemoration of the Opening (October 8 – December 31, 2019)

Division	Adult	Senior/ Adolescent	Child (3-Years-Old or Over)	Challenged / Person of National Merit, Etc.	Remarks
Individual	6,000 Won	5,000 Won	4,000won	3,000won	May reboard twice on the same day

Normal Fare (From January 1, 2020)

Division	Adult	Senior/ Adolescent	Child (3-Years-Old or Over)	Challenged / Person of National Merit, Etc.	Remarks
Individual	8,000won	6,000won	5,000won	4,000won	May reboard twice on the same day
Group	7,000won	5,000won	4,000won	4,000won	

Operating Hours

	Division	Hours	Remarks
Peak Season (April - October)	Weekends (Fridays, Saturdays, Sundays, and Holidays)	10:00~21:00	Closed (Mondays)
	Weak Days (Tuesdays, Wednesdays, and Thursdays)	10:00~18:00	
Off-season(November - March)		10:00~18:00	

Station Information

Wolmi Sea Station	269, Jemulryang-ro, Jung-gu
Wolmi Park Station	482, Wolmi-ro, Jung-gu
Wolmi Culture Street Station	18, Wolmimunhwa-ro, Jung-gu
Museum Station	297, Wolmi-ro, Jung-gu

Information 032-450-7600





LET'S ENJOY WINTER TO THE FULLEST!

Outdoor ice-skating rinks and sledding slopes are in operation throughout Incheon this winter. The outdoor ice-skating rink and sledding slopes operated in each area are popular due to low price and convenient access. Here are some places that the whole family can enjoy together.



INFORMATION

Yeonsu-dong Culture Park

- **Period**
February 17, 2020
- **Location**
120, Saema-ro, Yeonsu-gu
- **Hours**
 - 10 a.m. – 8 p.m. on Weekdays
 - 10 a.m. – 9 p.m. on Weekends and Holidays
- ※ Ice quality management for 30 minutes after 1 hour of use
- **Fees**
 - Skating, Sledding 2,000 won
 - Stakes-Full Day 5,000 won
- ☎ 070-4457-7271

Songdo-dong Michuhol Park Outdoor Ice-skating Rink

- **Period**
February 17, 2020
- **Location**
59, Haesong-ro, Yeonsu-gu
- **Hours**
 - 10 a.m. – 8 p.m. on Weekdays
 - 10 a.m. – 9 p.m. on Weekends and Holidays
- **Fees**
2,000 won for 1 hour
- ☎ 070-4457-7271

Cheongna International City Canal Way Sledding Slope

- **Period**
January 31, 2020
- **Location**
Whole area of the Canal Way
- **Hours**
12 p.m. – 7 p.m.
- **Fees**
Free
- ※ Sled stick, safety helmet, and crampons available

Munhak Sports Stadium Sledding Slope

- **Period**
2020.02.23
- **Location**
Munhak Sports Complex, 618, Maesohol-ro, Nam-gu
- **Hours**
 - 10 a.m. – 5 p.m. (admission closes at 4 p.m.) on Weekdays / Weekends
- **Fees**
12,000 won (50% off for pregnant women, challenged persons, persons of national merit, 65 or over)
- ※ Children under 24 months – Free

Incheon Grand Park Sledding Slope

- **Period**
February 16, 2020
- **Hours**
10 a.m. – 8 p.m.
- **Fees**
 - Adult 7,000 won
 - Adolescent 5,000 won
 - Child 4,000 won
- ☎ 032-473-8309

Haeoreum Neighborhood Park Outdoor Ice-skating Rink

- **Period**
February 8, 2020
- **Location**
1454, Aam-daero, Namdong-gu
- **Hours**
10 a.m. – 8 p.m.
- **Fees**
1,000 won for 1 hour and 30 minutes (including the equipment rental)
- ☎ 070-4206-3896

Susan-dong Outdoor Ice-skating Rink

- **Period**
February 8, 2020
- **Location**
16, Susan-dong, Namdong-gu
- **Hours**
10 a.m. – 8 p.m.
- **Fees**
1,000 won for 1 hour and 30 minutes (including the equipment rental)
- ☎ 070-4457-7270

Operating dates and hours are subject to change depending on the weather.



INCHEON NOW

News Brief



'Incheon Camp Market' Back to Citizens in 80 Years

Incheon Camp Market, which was used as the armory in 1939 and during the anti-Japanese resistance period and as the US military base in Korea after the independence of Korea, has returned to citizens after over 80 years.

On December 11, last year, the government held a meeting of the joint committee on US-South Korea Status of Forces Agreement (SOFA) at Camp Humphreys in Pyeongtaek, and it was resolved that the four closed bases of the US Forces such as Camp Market in Bupyeong, Camp Eagle in Wonju, Camp Long, and Camp Hovey Shea Range in Dongducheon should be returned to Korea immediately.

As it is confirmed that all sites of Camp Market should be returned, Incheon plans to open some of the camp areas to the public and explore ways to make full use of it. Incheon intends to revise and supplement the district development plan until 2021 by conducting citizen tours and holding joint discussions with experts and citizens once a month in line with the policy of developing Camp Market into a place owned by local residents and citizens.

Establishment of Local Office of UN Climate Technology Center

About the climate change response, Incheon attracted the regional office of the CTCN (Climate Technology Center & Network), an international organization responsible for the transfer of the greenhouse gas reduction technology to developing countries.

With the attraction of the CTCN Regional Office this time, Incheon became one of the cities that integrated major international organizations responding to the global greenhouse gas issues alongside GCF (Green Climate Fund). The GCF in Songdo, Incheon is the international organization that aims to finance the climate change response, and the CTCN is the organization that focuses on technology transfer.



Creating 50 Urban Forests, Lung of Incheon

Incheon will develop urban forest trails to reduce particulate matter, reduce heat islands, secure green spaces, and restore ecological functions of the city. This year, Incheon plans to create 257,000 m² of urban forest trails in 50 places, including the idle lands the Suin Line.

Production of IFEZ 'Gourmet Tour' Restaurant Guide

Incheon Free Economic Zone Authority produced and distributed 3,500 copies of the booklet called "Incheon Free Economic Zone Gourmet Food Tour," which introduces famous restaurants that offer dishes that domestic and foreign visitors can feel free to enjoy in the Songdo, Yeongjongdo, and Cheongna Districts. This booklet contains 139 famous restaurants that were recommended for delicious dishes, cleanliness, and unique ambiance along with a variety of information such as photographs of interior and exterior, location, and prices. It is written in three languages: English, Chinese, and Japanese and can also be downloaded from the Cultural Tour and Tour Guide section of the Incheon Free Economic Zone Authority website.



Establishment of Stanford University Research Center in Songdo, Confirmed

The research center of Stanford University will be established in Incheon Global Campus in the second half of this year. The Incheon Free Economic Zone Authority signed a contract with Stanford University in California, USA, on December 4 to establish a research center inside Incheon Global Campus. Stanford University's research center will collaborate with domestic universities and related organizations in various fields such as smart city technology, urban environment, and Smart City integration and propagation.



Palmido Lighthouse, State-designated Cultural Heritage Registration Site Survey

The Incheon Regional Office of Oceans and Fisheries conducted an on-site survey to register Palmido Lighthouse (Incheon Intangible Cultural Heritage No. 40), which is Korea's first modern-style lighthouse, as a historic site, a state-designated cultural heritage.

Incheon plans to request the Cultural Heritage Administration through the resolution of the city's cultural heritage committee to promote the lighthouse from the municipal tangible cultural heritage to the state-designated cultural heritage.

Introducing "Book Drive Through" - Borrow Books on a Car

The 'Book Drive Through' system, which allows people to borrow and return books from their cars, will be put into effect in January.

The Book Drive Through is a system that allows people to borrow or return books from the car any time once they make an online reservation for the books for 'Book Drive Through' in advance. You do not always need to drive your car, but you can walk into the Book Drive Through booth directly to borrow the books you reserved or return the books you borrowed.

Michuhol Library will be piloting the system from this month and will be applying for a joint patent on the system, which was developed jointly with the book information system developer.

Good luck!

JOBKOREA

TIPS FOR FOREIGNERS ON EMPLOYMENT AND WORK

Finding a job or working in a foreign country is in itself a series of difficulties. We prepared tips for job seekers and workers to live smart in Korea. Here are some useful tips on employment and work for foreign workers.



EMPLOYMENT

1. SYSTEM FOR PERMITTING EMPLOYMENT OF FOREIGN WORKERS

The System for Permitting Employment of Foreign Workers allows small and medium companies that failed to find domestic employees to hire non-professional foreign workers by obtaining employment permits from the government.

2. FOREIGN WORKER EXCLUSIVE INSURANCE (MANDATORY INSURANCE)

DIVISION	SUBJECT OF SUBSCRIPTION	CONTENTS	INSURANCE PAYMENT METHOD
Departure Guarantee Insurance	Employer	Insurance purchased for the payment of retirement allowance due to departure, etc. (paid monthly)	8.3% of monthly ordinary wage
Guarantee Insurance	Employer	Insurance purchased to prepare for the employer's nonpayment of wages for foreign workers	Single payment, 15,000won/year per worker (Premium may vary depending on the term of labor contract.)
Returning Expenses Insurance	Foreign Worker	Insurance purchased to cover expenses required by foreign workers to return home	Single payment or divided into three or less installments, varies depending on the country (400,000–600,000 won)
Personal Accident Insurance	Foreign Worker	Insurance purchased to cover workers' illnesses and deaths other than occupational accidents	Applied differently depending on sex, age, etc.

LABOR STANDARDS ACT

1. PROTECTION UNDER THE LABOR STANDARDS ACT

※ Source : Labor Standards Act and Act on the Guarantee of Employees' Retirement Benefits

- Applied to any business or workplace that employs five or more full-time employees.
- For a business or workplace employing four or fewer employees, only some of the provisions of the Labor Standards Act shall apply.
- The wage shall be paid in full and directly in currency on a regular basis on a fixed date set at least once a month.
- Additional wages may be paid for extended work, night work, and holiday work.
- Workers are entitled to the retirement allowance if they have worked more than one year.
- When the worker is not paid wages and retirement allowance, assaulted by the employer or manager, forced to work long hours or regardless of his or her own will, or suffers from any other breach of the Labor Standards Act, the worker may file a complaint to the local labor office/agency or labor supervision office in charge of the workplace

2. DEFAULT ON PAYMENT OF WAGES

Where there is a default on the payment of wages, the worker may notify the labor supervisor at the local labor office/agency in charge of the workplace and request for corrective action. When a complaint is filed with the local labor office/agency, fact-finding shall be carried out on the worker and the employer usually after 10–14 days. In the course of investigations, the worker is advised to prepare materials to support his or her claim.

Tipbox



● Employment Related Sites

- Employment Permit System

- www.eps.go.kr
- ☎ 032-460-4701

- Ministry of Employment and Labor

- www.moel.go.kr (English available)
- ☎ 1350

● Social Insurance Related Inquiries

- National Health Insurance

- www.nhis.or.kr (Japanese, Chinese, Vietnamese supported)
- ☎ 1577-1000

- Industrial Accident Compensation Insurance

- Korea Workers' Compensation & Welfare Service
- www.kcomwel.or.kr
- ☎ 1588-0075

- Employment Insurance

- Employment Welfare Plus Center
- www.workplus.go.kr/jobcenter
- ☎ 032-460-4701

- National Pension

- www.nps.or.kr (Support English, Chinese, Indonesian, Thai, Mongolian)
- ☎ 1355

※ Reference : Guidebook for Living in Incheon for Foreign Residents



Information about INCHEON

WEATHER

Located in the middle of the Korean peninsula and facing the West Sea, Incheon shows both continental and maritime climates. The lowest recorded temperature in Incheon was -21.0°C (-5.8°F) and the highest, 38.9°C (102.02°F). The average temperature is 12.1°C (53.78°F), 0.7°C lower than that of Seoul.

	January	February	March	April	May	June
Average temperature	-2.1°C	-0.3°C	5.1°C	11.3°C	16.4°C	20.9°C
Average rainfall	20.6mm	20.8mm	40.5mm	57.5mm	100.3mm	112.0mm
Average rainy days	3.8 rainy days	3.1 rainy days	4.5 rainy days	5.7 rainy days	6.5 rainy days	6.8 rainy days

	July	August	September	October	November	December
Average temperature	24.0°C	25.2°C	21.1°C	15.0°C	7.6°C	0.9°C
Average rainfall	319.6mm	285.8mm	153.5mm	53.4mm	51.0mm	19.3mm
Average rainy days	11.8 rainy days	10.4 rainy days	6.2 rainy days	4.7 rainy days	6.1 rainy days	3.8 rainy days

LOCATION

Incheon is located at $37^{\circ}28'$ North and $126^{\circ}37'$ East. Can you think of any cities in the world at the same latitude and longitude as Incheon?

Cities on the same latitude:

San Francisco, California in the USA, and Madrid in Spain

Cities on the same longitude:

Darwin in Australia, and Manila in the Philippines



Latitude N37° 28'
Longitude E126° 37'

TOTAL AREA

Incheon is the largest one of the eight metropolitan cities in Korea. The total area of Incheon Metropolitan City is $1,063.27\text{km}^2$, which is larger than Ulsan Metropolitan City ($1,061\text{km}^2$), which had boasted of being the largest in Korea. The large cities in Korea next to Incheon and Ulsan are Daegu, Busan, and Seoul, in respective order.

Land Area $1,062.1\text{km}^2$, 168 Islands
(40 inhabited, 128 uninhabited islands)

FINANCES

2019 Budget **10,111.5 billion won**

LIFE AND POPULATION

Incheon Metropolitan City is composed of two counties, Ganghwa-gun and Ongjin-gun, and eight wards (Jung-gu, Dong-gu, Michuhol-gu, Yeonsu-gu, Namdong-gu, Bupyeong-gu, Gyeyang-gu, Seo-gu). The population of Incheon Metropolitan City is 3,021,398, which makes it the third largest city in Korea by population next to Seoul and Busan. Currently, 67,554 foreigners reside in Incheon. The economically active population is 1,652,000, and the ratio of women to men is continuously increasing.

BRAND

Incheon is the city that connects the Republic of Korea to the world. The brand for the city of Incheon, 'all ways INCHEON', means 'all roads lead to Incheon.' The core value is 'First Ever', which means Korea's first and Incheon's best. This is the dynamic spirit of Incheon that announces the beginning of the Republic of Korea and creates new challenges, representing the strength that has made today's Korea.

all ways **INCHEON**

EDUCATION



Total **969** schools



Total **418,481** students

including kindergarten, elementary school, middle school, high school, university, special school, and other schools

TRANSPORTATION



LAND

7 railway lines, **95** stations,
139.3 km



SEA

Docking Capacity **128** berths
Ship Traffic **33,336** ships



SKY

Incheon International Airport
90 Airlines, **188** cities in
59 countries

