

all ways INCHEON



Go to Incheon Craft

What is Incheon Craft?

Incheon created a virtual city of Incheon using the world-famous game, Minecraft, so that anyone can freely experience and travel around Incheon online. Incheon Craft is the name of that virtual map of Incheon.



*Staying in your room?
Staying home? Let's go!*

**Travel online in your room!
How much do you know**

ABOUT INCHEON?

MINECRAFT

Image Source: Minecraft (Mojang, Microsoft)





SPECIAL THEME Songdo International City	04	ENJOY INCHEON Cultural Spaces of Incheon	24
TREND ISSUE Korean Custom Changed by COVID-19	10	CHOICE INCHEON Traditional Culture Experienced in Incheon	28
INCHEON ISSUE Songdo, Future of K-Bio	14	NEWS News Brief	32
INTERNATIONAL About EAAFP	16	INFORMATION About INCHEON	34
TOGETHER Back to Korea with Family - Mr. Aaron Ko	18	CULTURE 2020 Incheon Pentaport Music Festival	36
SPECIAL SPACE Traditional Fish Market in the Coastal City, Incheon	22	REAL LIFE Public Transportation and Bicycle Sharing Service	38

Cover Description The cover of this edition is Songdo Central Park located inside Songdo International City.

Publisher by Incheon Metropolitan City **Publisher** Mayor of Incheon Metropolitan City
Editor in Chief Bong-hoon Shin **Managing Editor** Sang-hyun Baek **Team Manager** Jin-kuk Kim
Planning & Editing Yoon-gyeong Kim **Tel** +82-32-440-8304 **Website** www.incheon.go.kr
E-mail goodvoice@korea.kr **Design & Print** Westco **Tel** +82-32-423-1988

IT'S INCREDIBLE

Songdo International City is filled with joy and surprise.
 Modern buildings create an elegant atmosphere unique to the future city,
 and the sensuous contents that fill the city provide joy from a special trip.
 The joy and surprise of Songdo, the city that placed layers of nature and culture on top
 of the framework of cutting-edge technology.
 Come to Songdo, now!

SONGDO INTERNATIONAL CITY

FILLED WITH SURPRISE AND JOY

If you wish to visit an elegant and pleasant futuristic city, then Songdo International City is the answer. Visited by many tourists every year, Songdo International City is not simply a tourist destination. It is the central city of Incheon Free Economic Zone and was chosen by world-renowned companies, making the tour of the city modern and beautiful. Buildings that capture your eyes produce an elegant urban sentiment, and Korea's best green spaces and parks color the city fresh.

- 1 Songdo Central Park
- 2 East and West Boathouse
- 3 Songdo Hanok Village
- 4 Solchan Park
- 5 CAISSON24
- 6 G-Tower Observatory (IFEZ Promotion Center)
- 7 TRIBOWL
- 8 Incheon Urban History Museum
- 9 Hyundai Premium Outlet
- 10 Triple Street
- 11 Songdo Convensia

SONGDO CENTRAL PARK

Songdo Central Park is a must-visit place when visiting Songdo International City. The park connects you to nature through a forest of high rises and also offers a variety of water experiences as Korea's first sea water park alongside various passages to stroll. You can rent a canoe, kayak, or family boat at the East Boat House or take a water taxi at the West Boat House. With exotic scenes to enjoy such as Deer Park and Rabbit Island, you can rent a bicycle and enjoy the sea water foot bath.

📍 196, Technopark-ro, Yeonsu-gu



SONGDO HANOK VILLAGE

When you walk in Songdo Central Park, you will find a village of traditional Korean houses called 'hanok' in the heart of Songdo surrounded by modern buildings. With a hanok hotel, restaurant and cafe, you can enjoy leisure in the city to the fullest.

📍 180, Technopark-ro, Yeonsu-gu, Incheon

FILLED WITH JOY IN

EAST AND WEST BOAT HOUSE

Enjoy exciting water sports in the waterway that runs across the park. You can enjoy canoes, kayaks, family boats, or SUPs (standup paddle boarding) at the East Boat House on the eastern part of Songdo Central Park. Put yourself in a landscape painting while boating with the sunset in the backdrop. Go to the West Boat House on the other side of the park to catch a water taxi. Meet the scenery consisting of Songdo Central Park, buildings lining up the waterfront, and various sculptures in a different angle on the waterway running across the city.

- 📍 East Boat House: 160, Convensia-daero, Yeonsu-gu, Incheon
- 📍 West Boat House: 253-34, Incheon tower-daero, Yeonsu-gu

GUIDE TO WATER SPORTS

Division	Price and Time	Telephone
East Boat House	• Canoe: 3 People / 60 Minutes / 27,000 Won	032-831-4609
	• kayak: 3 People / 60 Minutes / 27,000 Won	
	• Transparent Kayak: 3 People / 50 Minutes / 27,000 Won	
	• Family Boat: 5 People / 30 Minute / 35,000 Won	
West boat house	• Party boat: 5 People / 30 Minutes / 40,000 Won	032-834-4609
	• Adult: 4,000 won • Child: 2,000 won	
	• Sightseeing: Approximately 20 Minutes	
	• Departure: Every hour on the hour (Weekday)	



SOLCHAN PARK

Enjoy a walk with the open view of the sea or appreciate the beautiful glow of the setting sun. On sunny days, you can also see as far as Palmido Island at a distance. The park is perfect for a quick excursion with family, couples, or friends. It is also fun to feed seagulls flying around you.

📍 20, Convensia-daero 391beon-gil, Yeonsu-gu

SONGDO

CAISSON24

You can find CAISSON24 while walking along Solchan Park. The flamboyant appearance of the building forms such an exquisite harmony, which makes this place a popular venue for weddings. It also includes facilities to experience various cultures such as an Italian restaurant, dining pub specializing in craft beer, cafe, culture museum, photo studio, and music box.

📍 20, Convensia-daero 391beon-gil, Yeonsu-gu
☎ 032-832-0024



G-TOWER (IFEZ PROMOTION CENTER)

G-Tower houses IFEZA and international organizations such as GCF and UN bodies, and a treasure is hidden here. It is the IFEZ Promotion Center located on the 33rd floor, which offers the best view of Songdo International City. The center presents the past, present and future of IFEZ (Incheon Free Economic Zone) at a glance alongside the presentations showing the development process and plan of IFEZ and the current status of its projects. It also offers the latest exhibition facilities such as a three-side media video show and system for simulation experience to help visitors understand the contents on exhibit. The center is also an observatory surrounded by full-glass walls in all sides, and the panoramic view of Songdo International City it offers is quite charming.



FILLED WITH WONDER IN SONGDO

**TRIBOWL**

The cultural complex, TRIBOWL, breaks the stereotypes on buildings. While embodying the shape of three bowls on the outside, it has an ambience unique from other buildings on the inside. By emphasizing the beauty of the spiral space, it incorporated natural beauty into modern architecture. The amphitheatric concert hall and multipurpose cultural space give a chance to enjoy culture and art freely. At night, shades are added to the exterior of the buildings to create a perfect nightscape.

📍 250, Incheontower-daero, Yeonsu-gu
☎ 032-832-7994-6

INCHEON URBAN HISTORY MUSEUM

Wonder how Incheon changed and developed? Go to Incheon Urban History Museum. It shows the entire history of Incheon, which started as an open port city and grew into a metropolis with a population of three million. It offers various courses and educational programs on the theme of urban life history.

📍 238, Incheontower-daero, Yeonsu-gu
☎ 032-850-6000

HYUNDAI PREMIUM OUTLET

From imported luxury brands to famous home brands, it offers many choices to shoppers. Another advantage of the outlet is that you can purchase items you want at relatively low prices. The basement includes a large book store and stores carrying fashion accessories, IT devices, and toys and is lined with diners with many choices from simple snacks to hearty meals.

📍 123, Songdogukje-daero, Yeonsu-gu, Incheon
☎ 032-727-2233

**TRIPLE STREET**

This place is easily accessible from the passage extending from Hyundai Premium Outlet. It is a cultural complex mixed with various contents. From shopping to food, attractions, entertainment, and resting spaces all around, you will never be bored here.

📍 33-3, Songdogwahak-ro 16beon-gil, Yeonsu-gu
☎ 032-310-9400

**SONGDO CONVENZIA**

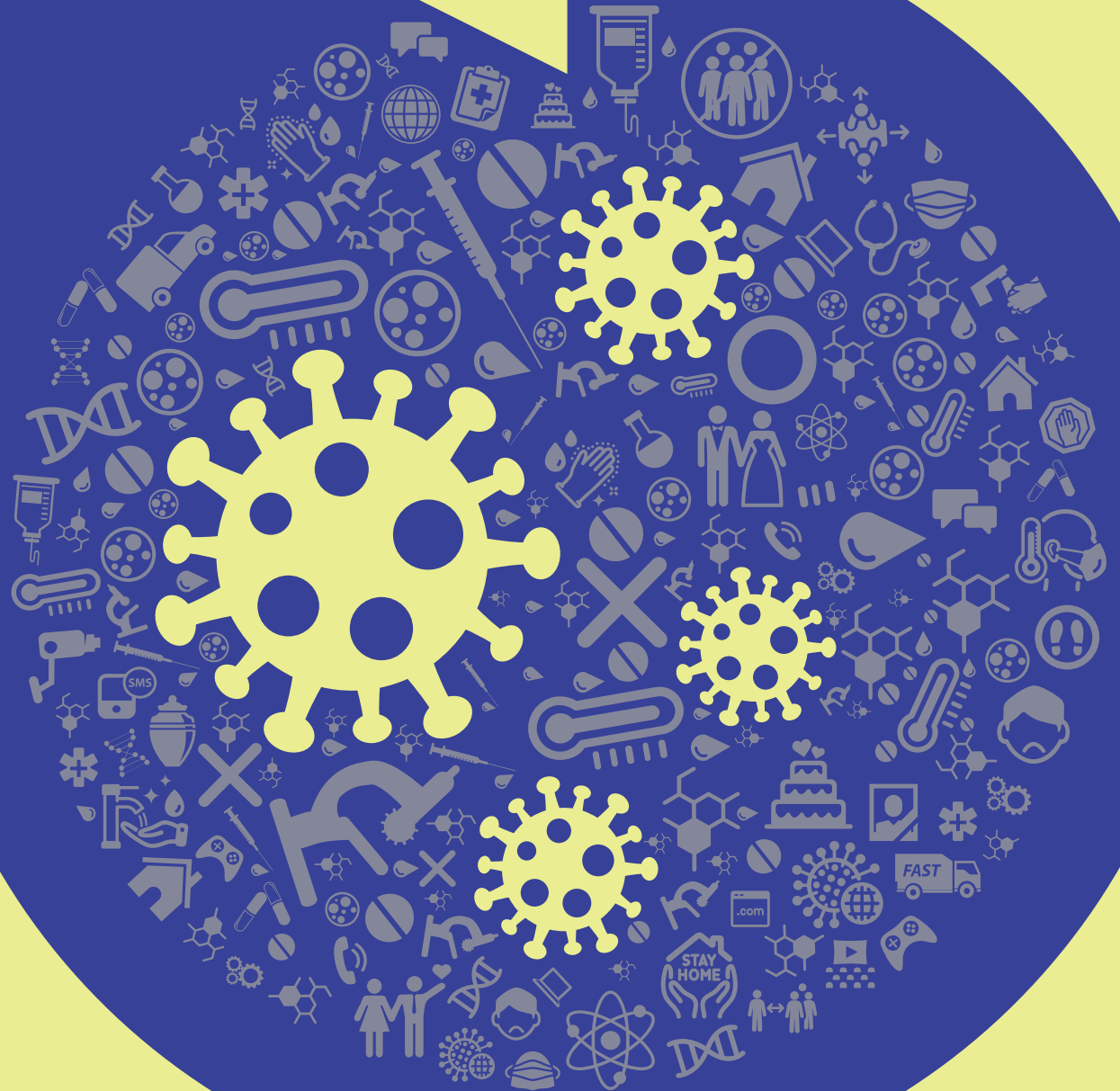
Songdo Convensia is located at the heart of Songdo International City, which was selected as Korea's first international conference complex district. The pointed roof, shaped like a mountain, was designed after the Taebaek Mountains. There are four exhibition halls and 35 meeting rooms, and many international conferences and exhibitions are held here.

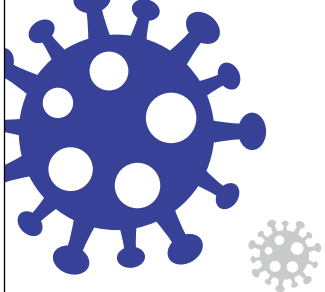
📍 123, Central-ro, Yeonsu-gu ☎ 032-210-1114



KOREAN CUSTOM HANGED BY OVID-19

COVID-19 is changing many parts of our society. Social distancing has decreased production and consumption and reduced export and import, leading to tougher economic times. It is changing the everyday life of the nation in many aspects, including education, culture, sports, traveling and leisure activities, working environment, and religious life.





Non-contact Korean Thanksgiving

COVID-19 even changed the holiday scene in Korea. Incheon is offering the service for its citizens to visit ancestral graves and hold a memorial service for ancestors during Chuseok, Korean Thanksgiving, for the first time among local governments. Incheon Family Park, the funeral facilities used by the citizens of Incheon and adjacent cities, will close its doors or suspend services, inevitably because it is visited by approximately 3,000 people, including bereaved families each day and operated all year round. The Incheon government and Incheon Facilities Corporation are responding actively to prevent COVID-19 infection. Still, it is expected that the



number of visitors to the park would increase phenomenally during the holidays, and Incheon decided to offer the service to cherish the memory of the deceased without visiting the park. To use the Online Ancestral Memorial Service, look for the deceased from Incheon Family Park's homepage, load the photograph of the deceased or the memorial box, select Set Memorial Service Table or Set Flower Table, and load Funeral Address. Meanwhile, Incheon Family Park will close all incense altars (ritual rooms) and suspend the shuttle bus service during Chuseok holidays to prevent the spread of COVID-19 and minimize close contact.

SETTING UP ONLINE MEMORIAL SERVICE TABLE (EXAMPLE)

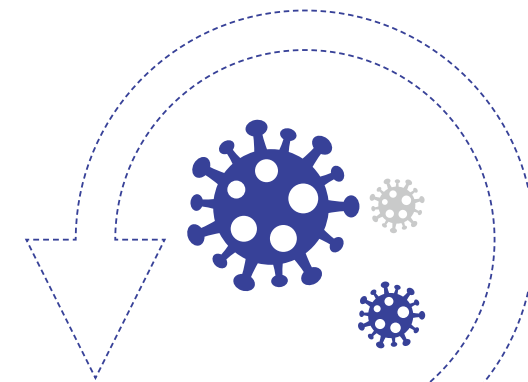


Small but Meaningful Wedding

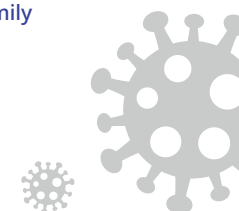
COVID-19 changed the wedding scene. Many newly-weds chose domestic destinations for honeymoon, such as Jeju Island, instead of going abroad. Also, many couples postponed the wedding in fear of infection and had trouble with wedding halls. However, a 'major life event' like a wedding cannot be delayed forever or canceled.

Meanwhile, there is something that draws the attention of couples who are concerned about the wedding. It is called 'Incheon style small wedding project.' Incheon is promoting the project to spread a simple but meaningful wedding culture. For the project, Incheon supports wedding consulting, small wedding hall setting, and even the cost for studio wedding photos, dress rental, and makeup (within 1 million won). A small wedding hall is set up in public institutions, parks, and cafes with beautiful views.

While economic and social difficulties are increasing due to COVID-19, the small wedding project of Incheon can set a good example.



As described above, the intense special quarantine system is changing the wedding culture and holidays to prevent the spread of COVID-19. However, most citizens of Incheon are aware of the seriousness of the current situation and have joined the efforts to contain the disease and supported the government's actions. We hope the COVID-19 crisis ends as soon as possible so that everyone can enjoy a pleasant and comfortable family gathering.



Songdo, Future of K-Bio

Bio companies with international competitiveness are opening their offices in Songdo International City one after another, and the city is becoming the world's largest bio healthcare cluster that leads K-Bio. IFEZ is planning to develop Songdo into a global bio healthcare cluster as of 2030 and create jobs for 20,000 people centering on 700 or more bio companies.

Songdo International City, which is developing into a world-class global bio healthcare cluster, has the capacity of producing 560,000ℓ of biomedicine, which is the largest in the world for a single city as of 2018. It has companies capable of producing antibody biosimilars through Contract Development and Manufacturing Organization (CDMO) such as Samsung Biologics, Celltrion, and DMBio.

Especially, Samsung Biologics and Celltrion are the representative bio companies of Korea and they are considered as the two prominent companies of the bio cluster. The cluster also includes Janssen Vaccine, an affiliate of Johnson and Johnson which is the global pharmaceutical company, and the Korean corporation of Merck which is the German pharmaceutical company, and Saint-Gobain of France which supplies medicines, medical supplies, and equipment to Korean pharmaceutical and bio companies. Currently, 5,000 or more people are working at 60 or more bio companies and research institutes, and Ghent University, Inha University, Incheon National University, and Yonsei University Global Campus are providing the basis for industry-academy cooperation. Bio companies with the highest technological strength are coming to Songdo International City, one following another.

Songdo began to develop into a global bio cluster as the characteristics of the free economic zone, and the geographic advantage based on the access to Incheon International Airport drew attention. Foreign investment companies have the edge in securing a site as they can purchase or lease a site for industrial facilities, where they can construct research institutes and factories, through a private contract following the 'Special Act on Designation and Management of Free Economic Zones.'



Major Corporations in
Songdo Global Bio Hub

SAMSUNG
SAMSUNG BIOLOGICS

Manufacturing and
R&D of biomedical
products

CELLTRION

Manufacturing and
R&D of biomedical
products

DMBIO

Manufacturing and
R&D of biomedical
products

janssen | PHARMACEUTICAL COMPANY
of Johnson & Johnson

Manufacturing and
R&D of infant vaccine

SAINT-GOBAIN

High-tech bio-
manufacturing facility by
Saint-Gobain of France

MERCK

Korea Life Science Operation
Headquarters by
Merck of Germany



Samsung Biologics and Celltrion, which play a pivotal role in Songdo Bio Cluster, also set out to expand their production facilities.

Samsung Biologics has the world's largest biomedicine production facilities with a capacity of 360,000ℓ in Songdo, Incheon. Also, they are investing 1.74 trillion won in constructing Factory 4 with a capacity of 256,000ℓ, which is the largest capacity in the world for a single factory. Also, Samsung Biologics has secured excellent competitiveness by successfully launching a proprietary cell line expression technology (S-CHOice) to ensure the perfect 'one-stop service' from the development of cell lines to the production of the final product.

Celltrion is currently developing the antibody treatment for COVID-19 and vaccines. It will start the construction of the third factory in Songdo in 2023 and develop a bio town. Incheon and Celltrion will be strengthening the cooperative system to develop Songdo Global Bio Hub by promoting the early construction of Songdo Factory 3, developing advanced bio-health technologies, and developing the Celltrion Town including global companies and research institutions.



Based on the bio-industry described above, IFEZ is expanding the existing bio cluster in the Zones 4, 5, and 7 in Songdo by adding Zone 11 to develop the representative K-Bio Cluster. IFEZ will be developing a global bio healthcare cluster in a 2 million m² site including 920,000 m² site of Zones 4, 5, and 7 as well as the key areas of Zone 11, where the foundation work will begin in the first half of next year, to attract 700 or more bio healthcare companies as of 2030. Following this plan, it will expand the employment level from the current 5,000 people up to 20,000 and sales from two trillion won up to 10 trillion won.

920,000m²
Existing Bio Hub (Zones 4, 5, and 7)

2 Millionm²
Global Bio Healthcare Cluster
(Planned for 2030)



Existing Bio Hub (Zones 4, 5, and 7)

Site for Expansion (Zone 11)

Incheon has another 'airport' that we are not aware of other than Incheon International Airport. This airport does not require passports and visas and is made of wetland and mudflat that act as a way station for the migratory bird. The West Sea that Incheon embraces is the favorite stopover site for migratory birds that travel between Oceania and East Asia. It is one of the reasons EAAFP opened its office in Songdo. This article introduces EAAFP, which is working hard to protect migratory birds of Oceania and East Asia.

www.eaaflyway.net
G-Tower 3F
+82 32 458 6501



EAAFP, PROTECTOR OF MIGRATORY BIRDS ACROSS WORLD

The 'East Asia – Australasian Flyway Partnership (EAAFP),' an international organization located at G-Tower in Songdo, analyzes and preserves the flyway of the migratory birds.

While traveling a long distance, the migratory birds rest for two to three weeks to take food. However, they are losing places to go due to reclamations and even losing their lives due to reckless hunting. The number of migratory birds dropped rapidly. The crisis of the migratory birds cannot be resolved by a single country. EAAFP was established to resolve this global issue. Currently, EAAFP is determined to protect the migratory birds that travel a broad region from Alaska to Northeast Asia centering on Korea, Southeast Asia, and Australia. Thus, EAAFP is working with 37 partners, including 18 countries, six government agencies, 12 non-governmental organizations (NGOs), and one international private company. They share and analyze the flyway of the migratory birds to protect them.

WHY SONGDO?

Why did EAAFP open an office in Songdo, then? Incheon is home to over 80% of the remaining 2,700 black-faced spoonbills around the world. In other words, the black-faced spoonbills will become extinct when Incheon is contaminated. Reclamations in Songdo had enormously threatened the breeding of the black-faced spoonbills. Still, fortunately, they were breeding in an artificial island in Namdong Reservoir. However, this was a very lucky case. Usually, the number of birds drops quickly and they become endangered species. In particular, the entire region of the West Coast of Korea centering on Songdo acts as the layover place for migratory birds traveling between East Asia and Oceania, Korea's effort is desperately needed. It is the reason EAAFP opened its office in Korea.

Commemorative Event for World Migratory Bird Day

The 'World Migratory Bird Day' is a global public awareness-raising campaign held to protect migratory birds and their habitat. It is held twice a year, in May and October. To commemorate the World Migratory Bird Day, various events are held worldwide, including the migratory bird festival and related educational programs, and a trip in search of birds. ※ For details refer to EAAFP homepage (www.eaaflyway.net)

Everyone is welcome to join!



EAAFP currently sponsors activities across the Flyway. These campaigns have been developed to raise awareness and bring people and countries together. By drawing attention to migratory waterbirds and their habitats, we can help to ensure their continued safety and prosperity. These campaigns are directed at all levels, especially local communities, schools, and individuals.

Address : 3F Bon-dong G-Tower, 175 Art center-daero, Yeonsu-gu, Incheon, Republic of Korea (22004)
For more information: secretariat@eaaflyway.net

Spoon-Billed Sandpiper



Scaly-Sided Merganser



Black-Faced Spoonbill



Saunders's Gull



Baer's Pochard



Cranes



EAAFP Q&A

Q. How can I join the partnership?

- ① The partnership is open to new partners. Governments, international NGOs, inter-governmental agencies and international business sectors interested in joining should contact the Secretariat.
- ② Access the Become a Partner page for more information on the procedures for membership and the benefits of joining.

Q. What is 'Flyway', specifically?

The routes that migratory waterbirds traverse on an annual basis are known as 'flyways.' There are nine major flyways around the world. During migration, waterbirds rely on a system of highly productive wetlands to rest and feed, building up sufficient energy to fuel the next phase of their journey. International cooperation across their migratory range is therefore essential to conserve and protect migratory waterbirds and the habitats on which they depend.



The routes that migratory waterbirds traverse on an annual basis are known as 'flyways.' This map is largely based on Shorebird routes.



03

Interview**Mr. Aaron Ko****Back to Korea
with Family**

Aaron Ko. He is Korean, but American who uses the name 'Aaron Ko' more often than his Korean name, 'Ko Sang-hyeok.' The reason he has two names and two nationalities is that he was born in Korea but adopted to America. Here is an intimate story about why he returned to Korea with his family as an American and how he lived his life.



He is currently enjoying each day with his family and friends in Songdo International City, Incheon.

KOREA, COUNTRY WITH SAD MEMORY

Aaron Ko's (hereinafter, "Ko") childhood was gloomy. He lost his parents at an early age and spent two years at an orphanage. Later, he was adopted to a foster family in America and moved to Iowa, but he was an alien there, too. It was difficult to find any foreigner, not to mention Korean, and the city did not have cultural facilities. He recalls that it was just fields, farms, and domestic animals all around his place. Would it be wrong to expect some attachment to or yearning for Korea because he was adopted after his parents passed away? He did not hang out with relatives, but he did remember something about his original family. He visited his relatives once in 2015. But that was it. We can only guess that he did not have a good memory.

FINALLY HERE, SONGDO

After graduating high school, he reached the age to become independent, and the first thing he did after becoming independent was changing his name. He does not keep in touch with his foster parents.

Since he did not want to talk much about his childhood throughout the interview, we were reluctant to ask more about it. We presumed that he did not have a very happy childhood because he was adopted and grew up in a strictly American environment.

In his 20s-30s, Ko wandered from place to place. He majored in computer science in the university. He built a career in finance and IT, living and working in New York. The company was looking for people to work in the branch office in Japan. Ko, with the experience of visiting countries in Asia many times for business, applied for it willingly. He did not have anyone like families and relatives holding him back, and working at a branch office was not bad for him. He worked at the branch office in Japan for four years, and he spent two years by himself and two years with his wife.



Later, he moved to Korea in 2012 and raised children for a few years in Cheongju, his wife's hometown. He says he had lived in various cities, including Seoul and did not really attach meaning to where he lives. Instead, he puts importance on living among the people who are on the same wavelength and friends. He moved to Songdo in November last year after his wife's best friend recommended the city. Ko is much more comfortable with the American style of living than the Korean style, perhaps because he grew up in the American environment from childhood. He says he becomes friends with people who have a broad view of the world and an open mind based on various experiences. Fortunately, his close friends live in Songdo and he made friends with likeminded people among many foreigners in this international city. Ko says he has a good time with his friends and family on the weekends and holidays.

Especially, Songdo has Central Park. It is not the one that he used to go in New York but the huge park is perfect for taking a walk with the family or to exercise. These days, he is frequently taking his daughter out to the park to ride a bicycle because she began to learn to ride it. However, one thing he thinks inconvenient about the park is that it is split into different parts, not connected entirely.

His daughter started learning to ride a bicycle recently. Songdo Central Park has become the go-to place for her practice.

DREAMING ABOUT FUTURE IN SONGDO

Perhaps the international city of Songdo is the city that fits him the best. Ko is keen on children's language skills in that he only speaks in English at home to help his children's English skills. His 11-year-old son had stayed in Seattle for three years and returned recently. He started learning Japanese now. For Ko learned to speak various languages fluently while living in America and Japan, he said he wants his children to have similar experiences. Although they cannot leave the country due to COVID-19, he had frequently traveled overseas before the crisis to help his children experience different cultures directly. Closeness to the airport is one of the reasons Songdo is charming. His children are attending ordinary schools now, but for he considers sending them to international schools. Songdo seems to be a perfect city for both his children's education and his lifestyle.

Ko was adopted and lived as an alien in a strange land while he grew up, and now he is living in Korea as an American. He feels he does not belong to any country, neither America nor Korea. Nationality or where he lives does not matter to him much. What matters to him is his 'family.' For he experienced the lack, the family must mean much to him. Ko does not have a big dream. All he wants is to share many things with his family and make memories. Building up small pleasures while enjoying the present, every day—we hope those are the days that he has.



Days that Son spent in Incheon



After returning to Korea, Ko is enjoying happy moments with his family.

Let's enjoy fresh seafood heartily in the capital region's largest fish market, which has been around for many years.

BEST 3! HOT SPOT!

#Seafood #Incheon
#Autumn #FishMarket
#Taste Of Sea #Fresh

Traditional Fish Market in the Coastal City, Incheon

Going to Incheon for Fresh Seafood

Sorae Port Fish Market is located in Nonhyeon-dong, Namdong-gu. It has continued its tradition for a long time since Sorae Salt Pond was established in 1933. Fresh seafood, the generosity of merchants, the scent of the sea lingering on the edge of the nose, and the gently resonating sound of seagulls make the place livelier. Sorae Port is particularly famous for jumbo shrimps in autumn. The freshness and taste of the jumbo shrimps are so good that the Jumbo Shrimp Festival is held every autumn. Do not miss the jumbo shrimps boiled with coarse sea salt. The taste of live jumbo shrimps, toasted right in front of your eyes, tastes so good. We recommend that you enjoy the 'taste of jumbo shrimp' with family, lover, and friends at Sorae Port Fish Market, which is one of the largest fish markets of Incheon.

📍 12, Soraeyeok-ro, Namdong-gu, Incheon

Recommended Restaurants

Cheondeokho has been operated for over forty years by three generations inside Sorae Port Fish Market. A variety of seafood, including raw fish slices, clams, and webfoot octopuses, is sold at a reasonable price each season. If you want a variety of fresh seafood, we recommend this place.

Cheondeokho ① King Crab, Snow Crab, Jumbo Shrimp, etc.
📍 39, Chukhang-daero 22beon-gil, Jung-gu, Incheon ☎ 032-719-1088

Incheon is a coastal city. Taking about it without mentioning 'seafood' will not give a full description of Incheon because various seafood dishes, from freshly sliced raw fish to jumbo shrimps and blue crab, and clams are offered at a reasonable price with a view of the sea. It is one of the reasons the fish markets in Incheon are always crowded. Today, Special Space will introduce three fish markets representing Incheon and the restaurants that operated for a long time in those markets, serving delicious dishes to many people. Let's explore the charms of Sorae Port Fish Market, Incheon Complex Fish Market (Yeonan Pier), and Oepo Port Pickled Fish Market.

1 — Sorae Port Fish Market



2 — Incheon Complex Fish Market



Incheon Complex Fish Market is the oldest wholesale fish market in the capital region. It is located in Yeonan Pier. Since it is also the location of the passenger terminal, marine plaza, Yeonan Fish Market, streets lined with sliced raw fish restaurants, streets lined with seawater bathhouses, pleasure boat quay, and South Port Pier, there are so many things to see. Also, there are as many as 500 stores that carry seafood products so that anyone can enjoy the taste of the sea heartily. Yeonan Pier is famous for its blue crab. Yeonpyeong blue crab, caught in the coast of Incheon is filled with eggs and flesh right up to the end of the shell. Spring is the season for female crab and autumn, male crab. If you want to enjoy fresh blue crab heartily but at a low price, this is the place to be.

📍 37, Yeonanbudu-ro 33beon-gil, Jung-gu, Incheon

Recommended Restaurants

It is an old and famous blue crab restaurant located beside the Yeonan Pier. It does not even have a sign, but everyone knows it as Donghae Restaurant. It is a truly local restaurant that only the people who know about it know. It only has one item on the menu called 'set menu with blue crab,' but it includes various crab dishes such as soy sauce marinated crab, spicy marinated crab, and spicy blue crab stew. The old restaurant with a trace of time is filled with the sincerity of the old cook who kept the place up and running for a long time.

Donghae Restaurant ① Set Menu with Blue Crab ☎ 032-885-5923
📍 104-20, Yeonan-dong, Jung-gu, Incheon

3 — Oepo Port Salted Fish Market

Oepo Port Salted Fish Market is located in Ganghwa Island. In ancient times, the salted shrimps prepared with shrimps caught on the coast of Ganghwa Island was the gift for the king. Oepo Port is still the largest producer of salted shrimps in Korea. The salted shrimps sold in this market are freshly made of shrimps caught in Ganghwa Island. Also, the salted shrimp festival is held every October. When you go to the festival, you can have a chance to taste the excellent taste and quality of the salted shrimps. Salted fish is an essential ingredient for kimchi, the typical Korean food. The market becomes quite busy during the kimchi-making season when the scent of fresh vegetables fills the market.

📍 899-2, Haeanse-ro, Naega-myeon, Ganghwa-gun, Incheon

Recommended Restaurants

There is a whole bunch of dishes prepared with salted fishes other than kimchi. Today, we introduce Sinarirang, the restaurant specializing in the dish that has been enjoyed from the Goryeo Dynasty period, jeotguk galbi, which is short ribs stew with salted shrimps. It is a local dish that you can only find in Ganghwa, so if you visit the area, do not forget to taste it.

Sinarirang ① Short Ribs Stew with Salted Shrimp ☎ 032-933-2025
📍 4-3, Ganghwa-daero 409beon-gil, Ganghwa-eup, Ganghwa-gun, Incheon



Place to Feel Autumn, the Season of Culture

Autumn is the best season for engaging in cultural activities along with the cool breeze. Because it is the season that evokes dormant sensibility with the falling leaves. If you feel empty inside as if you are getting sentimental in the fall, fill it up with a variety of culture and art you can find in Incheon. This article will introduce special spaces unique to Incheon where you can enjoy various cultural activities, such as the spaces for reading, exhibition, art, and experience.

Unusual Contents Experience Center



VR SPACE OF UNLIMITED IMAGINATION AMUSEMENT MEDIA SPACE TAM

It is a facility to enjoy the immersive contents of Incheon excitingly. The contents cover the history and new technology of Incheon. Visitors can vividly experience the virtual reality and augmented reality produced with modern technology through various characters and story themes. It has over 30 experiential contents, including Incheon Landing operation VR and Tam's Tour of Incheon VR. Through the contents, visitors can quickly learn about the city, Incheon, while playing. It is recommended particularly for children, and it would help to make a reservation in advance through the internet.

- 📍 12, Seohae-daero 520beon-gil, Dong-gu, Incheon
- ☎ 032-766-4700

Libraries & # Independent Bookstores



LIVING HISTORY OF USED BOOKSTORES HANMI BOOKSTORE

Baedari Used Bookstore Street became famous as the place the drama, Goblin, was shot. Hanmi Bookstore located on this street, became a tourist attraction. This was originally the place that had relieved the thirst for knowledge for those who had great ardor for learning since 1955. There were over 40 used book stores in this alley, but only five of them remain today including Hanmi Bookstore to continue the legacy. Sign up for <Dong-gu Alley Tour> operated by Dong-gu Office to take a tour from the Used Bookstore Street to Baedari History and Culture Village with a cultural commentator explaining the place. It is an excellent opportunity to learn about local history.

- 📍 9, Geumgok-ro, Dong-gu, Incheon
- ☎ 032-773-8448

LEARN SIMPLY AND ENJOY WITH FUN THE MUSEUM OF KOREAN MODERN LITERATURE

In the Museum of Korean Modern Literature, located in the open port, you can vividly feel the history at the time the port was opened because it was actually remodeled from the warehouse from the 1920s-1930s and also exhibits and archives approximately 25,000 modern literature and humanities-related materials. It is Korea's first comprehensive public museum of literature established through a joint effort between Incheon government and Incheon Foundation For Arts & Culture. The museum has the first editions of famous works in its collection and is playing an important role in the modern literature of Korea. Also, it has continuously provided the opportunity to experience and communicate through various programs held with authors such as <Saturday Program with Author> and so on.

- 📍 76, Sinpo-ro 15beon-gil, Jung-gu, Incheon
- ☎ 032-773-3805
- 🕒 10 a.m. - 6 p.m. (Closed on Mondays)
- 💰 Free



Cultural Spaces of
Incheon

※ Concerts and experiential programs may be canceled depending on the COVID-19 related situations. Please check before visiting.



Galleries & Museums

COEXISTENCE OF PAST AND FUTURE CULTURE AND ART PLATFORM

The whole area of Haeon-dong, Jung-gu, Incheon, where Incheon Art Platform is located, is the area that has well preserved the buildings constructed between the 1930s-1940s. The formative values of the buildings have been recognized. Warehouses and company buildings, which are over 120 years old in some cases, were remodeled into a complex culture and art space. Currently, the buildings are used as the Life Culture Center, consisting of creative studios, workshops, exhibition halls, performance halls, and archives. These are the creative spaces where artists and researchers in various genres, including visual art, are engaged in creative and research activities.

- 📍 3, Jemulryang-ro 218beon-gil, Jung-gu, Incheon
- ☎ 032-760-1000
- 🕒 9 a.m. - 6 p.m.



SPACE THAT CONNECTS CULTURE ITTA SPACE GALLERY

This building, currently Itta Space Gallery, was originally a salt warehouse in the 1920s. Later, it was used as a Japanese style dry sauna and bookstore until it was remodeled into the current state. Today, it is used as a complex cultural space that 'connects' people, nature and people, and culture and people. It holds interesting exhibitions and performances each time, and unique architectural style and interior capture the eyes of tourists. It will be the cradle for various artists and is recommended to everyone.

- 📍 172-41, Chamoejeon-ro, Jung-gu, Incheon
- ☎ 010-5786-0777
- 🕒 11 a.m. - 5 p.m. (Closed on Mondays)

Art Center

GLOBAL COMPLEX CULTURE SPACE ARTS CENTER INCHEON

'Arts Center Incheon' was designed from the image of the maestro's conducting hand. The building represents Songdo International City along with the view that connects the unique appearance and the sea. It is similar to the Sydney Opera House in Australia. It is a cultural space that stands on the border of land and sea. It opened the concert hall with beautiful interior and exterior, satisfying the world-class sound system in 2018 and has held a variety of performances. It is characterized by the world-class sound system and an attractive exterior and interior. The opera house and museum will be additionally erected in the future.

- 📍 22, Artcenter-daero, Yeonsu-gu, Incheon
- ☎ 032-453-7700



IF YOU NEED TO REST INCHEON CULTURE & ARTS CENTER

Incheon Culture & Arts Center in Namdong-gu is the representative cultural space of Incheon that has received continuous support since the opening in 1994. It is the space that showcases various cultures and art, including outstanding performances by Incheon Municipal Art Company (Incheon Philharmonic Orchestra, Incheon City Chorale, Incheon City Dance Theater, Incheon Metropolitan City Theater). It has been effectively playing the role of the cultural ambassador for Incheon for a long time. Facilities include the outdoor theater, exhibition halls, large theater, etc. Also, it is close to Incheon Subway, which gives the advantage of accessibility. By providing various opportunities to experience the culture, it allows visitors to relax and feel comfortable.

- 📍 149, Yesul-ro, Namdong-gu, Incheon
- ☎ 032-427-8401





Traditional Korean Culture, Experienced in Full throughout Incheon

Traditional Culture Experienced in Incheon

Are you interested in Korean tradition? Do you want to study traditional culture excitingly? Do you want to make a special memory and have a unique experience? Incheon offers Various experiential activities to take a closer look at the culture of Korea.

They give a chance to experience various aspects of traditional culture, from food to craft and clothes, to immerse in the charms unique to Korea, and understand the culture more deeply and fully.



Choose the experiential activities that suit you through <Choice Incheon>. You can have an interesting experience and make unforgettable memories through the traditional Korean culture programs offered in Incheon.



※ Activities may be canceled due to the COVID-19 related situations. Please check before visiting.

-----> Yes -----> No

What is my taste?

I most likely do what I intended to do.

I feel comfortable living by the fixed rules.

I want a special experience in the heart of the city.

I can have fun spending time in nature for more than a day.

I am much interested in making things and dexterous.

What is left from traveling is the photographs.

A
Type

B
Type

C
Type

D
Type



If you chose **Type A**, you are a **Traveler Type** who are much interested in Korean culture and wish to take a rest inside nature.



LOTUS LANTERN INTERNATIONAL MEDITATION CENTER TEMPLE STAY

Lotus Lantern International Meditation Center was established to propagate Korean Zen Buddhism to the world. The center offers the temple stay program, which is designed to control your mind in nature. Various programs are available such as same-day program, resting program, and meditation program. It also offers the English program for foreigners who wish to experience Korean ascetic culture.

📍 349-60, Ganghwadong-ro, Gilsang-myeon, Ganghwa-gun, Incheon
 🌐 www.lotuslantern.net
 ☎ 032-937-7033



JEONDEUNGSA TEMPLE STAY

Jeondeungsa is the oldest surviving temple in Korea and is filled with cultural heritages from stele to Buddhist altar, bell, and sculpture. Jeondeungsa Temple Stay is for those who wish to get away from everyday life for a while and rest in the temple in the mountain. You can enjoy peace of mind with clean air and green nature.

📍 37-41, Jeondeungsa-ro, Ganghwa-gun, Incheon
 🌐 www.jeondeungsa.org
 ☎ 032-937-0152



If you chose **Type B**, you are an **Artist Type** who is in love with Korea and second to none in making things with your hands.



AEBO CRAFT MUSEUM

'AEBO' means 'Love of Treasure.' The museum is filled with traditional Korean art including pottery, metal craft, needlework, woodcraft, and stonecraft. It offers experiential programs that give a chance to make practical and beautiful craft items. Also, it is connected to the Traditional Korean Food Museum, where you can take a look at traditional dishes of Korea and also make them.

📍 71, Maneuigol-ro, Namdong-gu, Incheon
 🗑 Adult: 2,500 won / Adolescent: 2,000 won
 🧒 Child: 1,500 won
 🕒 Monday-Saturday, 9:00-18:00
 ☎ 032-466-3181



MICHUHOL TRADITIONAL FOOD CULTURE RESEARCH INSTITUTE

Michuhol Traditional Food Culture Research Institute continues the legacies and promotes the globalization of traditional dishes. The institute offers an experiential program for foreign tourists coming to Korea and multicultural families to make traditional dishes. Participants can make various traditional dishes such as gimbap, bibimbap, rice cake, kimchi, pickled vegetables, and hot pepper paste.

📍 97-7, Bukseong-dong 1-ga, Jung-gu, Incheon
 🕒 Monday-Saturday, 10:00~18:00
 ☎ 032-463-9911



If you chose **Type C**, you are a **Photographer Type** who wants to go around freely and make memories with photographs.



SINPO INTERNATIONAL MARKET SUPPORT CENTER

Sinpo International market Support Center provides a variety of information and guide to tourists visiting the market. It has a special space where you can experience traditional culture. You can try traditional costumes such as the king's robe, the girl's jacket with sleeves with multicolored strips, and so on and take photographs. There are also traditional wedding costumes and the wedding scene for visitors to experience.

📍 25-1, Uhyeon-ro 45beon-gil, Jung-gu, Incheon
 🕒 Weekdays, 9:00-18:00
 ☎ 032-764-0415



WOLMI CULTURAL CENTER

Wolmi Cultural Center exhibits traditional cultural materials showing Korean living culture and court culture. Visitors can try traditional costumes freely. Photo zones for taking pictures in traditional cultural settings such as the 60th birthday party, traditional wedding, and the king's chair make the visit more exciting.

📍 97-29, Bukseong-dong 1-ga, Jung-gu, Incheon
 🕒 Tuesday-Sunday, 10:00~18:00
 ☎ 032-440-5933



If you chose **Type D**, you are an **Epicure Type** who likes Korean foods and want to have delicious meals.



GYEONGBOKGUNG (SONGDO)

Songdo hanok village, showing its beauty while surrounded by high rises, captures people's eyes at once. Hanok village consists of various restaurants and cafes, and Gyeongbokgung, the Korean restaurant, offers charcoal-grilled ribs. You can enjoy a Korean course meal with submenus prepared with tender meat and seasonal food ingredients.

📍 180, Technopark-ro, Yeonsu-gu, Incheon
 🕒 Every Day, 11:30-22:00
 ☎ 032-834-2345



HANYANG (SONGDO)

Hanyang specializes in the marinated grilled bulgogi that you grill on a uniquely shaped dome-like plate with broth and vegetables. The meat is Korean beef, and it comes with side dishes composed of seasoned greens and others that stimulate the appetite. The restaurant has an outdoor garden that goes together with the traditional building. You can take a slow walk after the meal.

📍 180, Technopark-ro, Yeonsu-gu, Incheon
 🕒 Every Day, 11:30-22:00
 ☎ 032-834-6543

INCHEON NOW

News Brief



Putting up English Sign, 'PHARMACY', in 36 Pharmacies in Songdo

Incheon Free Economic Zone (IFEZ) is putting up the English sign, 'PHARMACY', on the front side of all 36 pharmacies in Songdo International City to show that it is a pharmacy to foreigners. The reason IFEZ is placing the English sign for the pharmacy is that foreigners, particularly from the English-speaking world, are experiencing inconveniences because the pharmacies generally have Korean signs and only put up a Chinese character indicating drugs, '藥', that foreigners do not recognize. The need for the English sign for pharmacies emerged recently as the number of foreigners looking for pharmacies increased due to COVID-19.

IFEZ 032-453-7662

Graves for People of National Merit inside Incheon Family Park

Graves for people of national merit will be constructed inside Incheon National Park. Incheon decided to improve and repair a part of

Bongandam, the charnel facilities of Incheon Family Park into the graves for the people of national merit in consultation with local veterans' organizations in October.

Following the decision, Incheon will be investing a total of 740 million won to construct 4,144 graves for the people of national merit (12,000m² site) inside Incheon Family Park. The graves will be available from the second half of next year.

There are 40,000 people of national merit in Incheon. Currently, they will have to use National Cemeteries located far from Incheon when they pass away as Incheon has no graves exclusively for them.

Veterans Welfare Division 032-440-2972



National Flag Flagstaves in Yeongjong Sky City

Yeongjong Sky City in Incheon Free Economic Zone will install national flag flagstaves. IFEZ announced that Korea Land and Housing Corporation (LH) would install 70 flagstaves for international flags on the median strip in the

553m section of Jayeon-daero in the central commercial district of Yeongjong Sky City until December.

IFEZ decided to carry out this project in consultation with LH as it was pointed out that Yeongjong International City lacks urban landscape facilities suitable for an international city comparing to Songdo and Cheongna International Cities.

Currently, in Incheon Free Economic Zone, the flagstaves for international flags are installed on Convensia-daero in Songdo International City and Jungbong-daero in Cheongna International City. When there are global events, the national flags of participating countries are hoisted.

IFEZ 032-453-7583



IFEZ Foreigner Community, Improving Settlement Together

IFEZ and foreigner communities held the first 'IFEZ Foreigner Community Council Meeting' at Gyeongwonjae Ambassador Incheon in Songdo International City on September 17 to resolve to improve the settlement environment for foreigners living inside IFEZ.

IFEZ Commissioner Lee Won-jae and the

members of the council of four foreigner communities participated in the meeting. The four communities are △ Songdo Foreign Advisory Board, △ Catchy Songdo, △ Expat Professional Business Women's Network, and △ The Giving Tree.



'Suin Line', Connecting Suwon and Incheon, Opens All Sections in 25 Years

The Suin Line, connecting Suwon and Incheon, is opening all sections in 25 years and began its operation on September 12.

The operating hours for the line bound away from Suwon Station are from 5:36 a.m. to 00:17 the next day, at an interval of average 20 minutes during rush hours and 25 minutes in other time zones.

The opening of all sections of the Suin Line will facilitate the transportation from Incheon and southwestern Gyeonggi-do (Siheung, Ansan, Hwaseong, Suwon) to eastern Gyeonggi-do (Yongin, Seongnam, etc.). It takes 90 minutes to travel from Incheon to Suwon on Line 1, but only 70 minutes on Suin Line.



Information about INCHEON

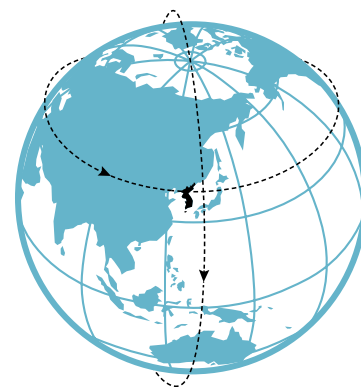
WEATHER

Located in the middle of the Korean Peninsula and adjacent to the West Sea, Incheon features both continental and maritime climates. The lowest temperature recorded in Incheon in history was -21.0°C (-5.8°F) and the highest, 38.9°C (102.02°F). The average temperature is 12.1°C (53.78 ° F), which is 0.7°C lower than that of Seoul.

	January	February	March	April	May	June
Average temperature	-2.1°C	-0.3°C	5.1°C	11.3°C	16.4°C	20.9°C
Average rainfall	20.6mm	20.8mm	40.5mm	57.5mm	100.3mm	112.0mm
Average rainy days	3.8 rainy days	3.1 rainy days	4.5 rainy days	5.7 rainy days	6.5 rainy days	6.8 rainy days
	July	August	September	October	November	December
Average temperature	24.0°C	25.2°C	21.1°C	15.0°C	7.6°C	0.9°C
Average rainfall	319.6mm	285.8mm	153.5mm	53.4mm	51.0mm	19.3mm
Average rainy days	11.8 rainy days	10.4 rainy days	6.2 rainy days	4.7 rainy days	6.1 rainy days	3.8 rainy days

LOCATION

The coordinates of Incheon are roughly 126°37'E and 37°28'N, and this the very middle of the Korean Peninsula, adjacent to the West Sea, and on the lower Hangang River. Located 28 km from Seoul, the capital of the Republic of Korea, Incheon's latitude is similar to that of San Francisco, Washington D.C., and southern Spain.



Latitude N37 ° 28'
Longitude E126 ° 37'

TOTAL AREA

Incheon is the largest of the eight metropolitan cities in Korea. The total area of Incheon Metropolitan City is 1,063.27 km², which is larger than Ulsan Metropolitan City (1,061 km²) that formerly had the largest area in Korea. The largest cities in Korea next to Incheon and Ulsan are Daegu, Busan, and Seoul, in respective order.

GEOGRAPHICAL FEATURES

The mountainous terrains of Incheon are composed of low hills under 300 m above the sea level excluding around a dozen mountains, including Manisan Mountain (469 m), Gyeongangsan Mountain (395 m), and Samgaksan Mountain (343 m), and there are no large rivers. Incheon has a ria coast, meaning that it has a long and complex coastline with many of islands. There are a total 168 islands in Incheon, and 128 of them are uninhabited.

LIFE AND POPULATION

Incheon Metropolitan City is composed of two counties including Ganghwa-gun and Ongjin-gun and eight wards (Jung-gu, Dong-gu, Michuhol-gu, Yeonsu-gu, Namdong-gu, Bupyeong-gu, Gyeyang-gu, and Seo-gu). Incheon's population amounts to approximately 3 million, which makes it the city with the third largest population in Korea next to Seoul and Busan. Currently, 72,235 foreigners live in Incheon.

MASCOTS

Spotted seals that love the lighthouse!
The mascots of Incheon were designed based on the lighthouse and spotted seals. The lighthouse was designed after the 'Palmido Lighthouse', which is Korea's first lighthouse, and it implies the connection between the past and future of Incheon, a city of advanced industry.
The spotted seal of Baengnyeongdo Island, a natural monument and endangered species, represents the nature-friendly city, Incheon.

BRAND

Incheon is the way out of Korea, the bridge to the world, and the path ahead of us. Incheon's city brand, 'All Ways Incheon' holds the meaning, 'All roads lead to Incheon.'
The core value is 'First Ever' which means the first in Korea and in Incheon. This is the strength that marked the beginning of Korea, the dynamic spirit of Incheon which takes on new challenges, and the strength that built today's Korea.

all ways INCHEON



Rock will Never Die!



**2020 INCHEON PENTAPORT
MUSIC FESTIVAL**



The 'Incheon Pentaport Music Festival' is the representative music festival of Incheon that makes everyone's heart pound along with passionate shouts and motions and brilliant lighting. It will be held without the audience at Songdo Penta Park to prevent the spread of COVID-19. The Rock Festival Concert will be broadcasted live through six channels, including KBS Kpop and 1theK. Also, the online audience will be recruited through the official homepage and connected through the application screen. Artists and the audience can communicate with each other through the monitor using messaging applications and comments. The concert will be available online over two days from October 16 to 17.

Korean cast includes Jaurim – the band with unreplaceable music style, Guckkasten – known for almost impossible treble and explosive shouting, Boohwal – with a huge fandom in Korea consisting of rock enthusiasts, Nell, Idiotape, Spring, Summer, Fall, Winter Re:union with Light & Salt, Galaxy Express, BewhY, Kingston Rudieska, SE SO NEON, Dongyang Gozupa, and Lee Hee Moon Company. These artists and the foreign cast (to be announced through the official homepage of Pentaport) will heat up the festival enthusiasts with the power of rock at the online concert.

Check out the details of the Incheon Pentaport Music festival at the Pentaport's official homepage and also the official website of the Incheon Tourism Organization.

October 16th - 17th 2020

Concert Format: Online concert

CONCERT



Tchaikovsky Series

The 'Tchaikovsky Series,' consisting of four concerts, will give a chance to appreciate the masterpieces of Tchaikovsky, one of the Korean people's most beloved classical composers, in a variety of orchestration. The first concert is the 'Night of Chamber Music,' accompanied by cellist Song Yeong-hoon's commentary. Renowned performers who are active inside and outside the country will present a gorgeous ensemble through high-quality performance on the same stage. Concerts in October and December will be presented through KBS Symphony Orchestra's performance. The third stage in November will be filled with a special performance provided with Korea's top ballet company, the Universal Ballet Company. The four concerts will end the second half of 2020 with the gems of Tchaikovsky's masterpieces.

Date : September 3 / October 8 / November 19 / December 17, 2020

Location : Concert Hall, Art Center Incheon **Time :** 20:00

Ticket : R 30,000 won, S 20,000 won



Kaleidoscope Music Society

At Elim Art Center, the Kaleidoscope Music Society, various performers who create and present a variety of beautiful music in infinite forms as if it is seen through a kaleidoscope, will give a concert. The Bat, Overture by J. Strauss, Jr., among the pieces to be performed, is an operetta by J. Strauss, Jr., who is referred to as the 'Emperor of Waltz.' Operetta is the predecessor of today's musical, and it is the genre that bridges opera and musical. This piece consists of waltz and polka and lets the audience enjoy the pleasure of music to the fullest along with the interesting storyline. It invites the audience to the exciting stories in the music told by seven different instruments.

Date : October 4, 2020

Time : 16:30

Location : Elim Hall, Elim Art Center

Ticket : All Seats 10,000 won



KCO Piano Trio

Three very distinct performers will be presenting brilliant melodies at Elim Art Center. Violinist Im Jae-hong' who won the Grand Prize at Busan MBC Concours and the First Prize at Joongang Music Concours and held a national tour recital, 'Cellist Park No-eul', who performed in his style and came third at Lutoslawski International Concours and received and received the Honorary Award at Tchaikovsky International Concurs, and 'pianist Na Jeong-hye' who touches the audience with the piano melody and won First Prizes at various competitions including Young Artists National Piano Competition and Mariam Enoch Music Concours, came together. The three performers will touch the heartstrings of the audience by performing the pieces such as Rachmaninov's <Trio élégiaque No.1 in g minor> and Tchaikovsky's <Piano Trio in a minor Op.50> with the vibe from old Russia.

Date : October 11, 2020

Time : 16:30

Location : Elim Hall, Elim Art Center

Ticket : All Seats 10,000 Won



Beethoven Begins

Art Center Incheon has steadily received favorable responses with 'Mozart Mosaic' in 2019. In 2020, it tells the untold stories of various composers centering on the works of Beethoven in celebration of the 250th anniversary of the birth of Beethoven. Conductor Choi Soo-yeol and Korea's top performance will present famous works of Beethoven alongside the masterpieces of various composers representing their times with journalist Kim Seong-hyeon's commentary. If it is too wearisome to stay home and rest on Saturday afternoon, take a special opportunity to enjoy the 'Beethoven Begins' performed in celebration of the 250th anniversary of the birth of Beethoven at the Concert Hall of Art Center Incheon to spend an exciting weekend. Enjoy the melodies of Beethoven's works that have charmed our ears and touched our hearts once again at the concert.

Date : October 31 and December 12, 2020

Time : 15:00

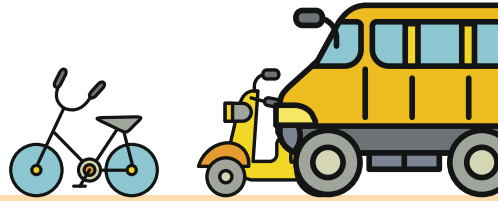
Location : Concert Hall, Art Center Incheon

Ticket : All Seats 20,000 won

SMART INCHEON

PUBLIC TRANSPORTATION
AND BICYCLE SHARING SERVICE

Incheon provides convenience for the citizens of Incheon through convenient transportation services. This section will introduce the smart transportation services of Incheon, including bus, bicycle, electric bicycle, and kickboard that makes our lives easier.



I-MOD

I-MOD

This service sends a 16-seater bus to a nearby stop when a passenger requests for the bus through the application from Yeongjong International City of Incheon. It is expected to increase the convenience of those experiencing inconveniences due to the absence of a bus route. (Officially operated from November 2020)

Characteristics

- Searches quick routes through artificial intelligence, without a fixed route
- Resolves traffic issues of new cities which lack public transportation infrastructure
- City operator may manage finances flexibly

⌚ 04:00-24:00 (Deadline for the request is 23:30)

💰 1,250 won (Same as the fare for the city bus and trunk line bus of Incheon)

Train Stations Connected

Yeongjong International City: Yeongjong Station, Unseo Station, Incheon International Airport Cargo Terminal Station, Incheon International Airport Terminal 1, 2 Station

COOKIE



Shared bicycle service available for anyone with a smartphone.

How to Use

1. Download COOKIE APP
2. Check the location of COOKIE bike
3. Scan the QR code using the APP to unlock
4. QR code attached to bike and smart lock
5. By scanning the QR code, open the smart lock

Target User: 14-years-old or over

Deposit: 5,000 won

Payment Type:

Cash(The amount charged by the user)
Point(The amount provided for free)

Rates: 250 won per 20 minutes

Kakao T Bike



It is the electric bicycle sharing service offered by Kakao. Even when you pedal for nothing, you can reach the maximum speed of 20km/h. Turn on GPS on your phone and check through the app because the service area changes frequently.

Service Area

- Whole area of Yeonsu-gu (Except for Incheon New Port area)
- Part of Seo-gu [1]

⌚ For the first 15 minutes, 1,500 won per minute
Afterward, 100 won per minute

How to Use

1. Pay a deposit of 10,000 won before riding the bicycle
2. Check the location of the bicycle under the Bike tap of Kakao T and scan the QR code to rent
3. The deposit can be returned any time and 9,500 won will be returned after deducting a fee of 500 won.

Gcooter



Gcooter is a shared electric kickboard. It is a means of transportation provided for those who are not familiar with two-wheelers. It is the most recently released transportation service.

⌚ For the first minute, 300 won
Afterward, 130 won per minute

How to Use

1. Run the app and find Gcooter nearby
2. Scan the QR code of the Gcooter with the smartphone or run an app to scan the Gcooter's QR code
3. Ride safely to the destination
4. Park at a safe location beside the bicycle stands or trees near the destination
5. Get off and take a picture of the parked Gcooter

INCHEON NOW
Quiz

How did you enjoy the 65th edition of <INCHEON NOW>?

We hope you found good memories from the past and new meanings inside it.

We have another quiz for those who read the 65th edition.

Find the correct answer and send an e-mail to us by October 23rd, 2020.

(You must include your contact information.)

We will randomly select winners from those who turned in the correct answer and send a small gift.

Quiz

What is the name of the building where

Incheon Free Economic Zone Authority is located?

Hint

- ① International organizations such as GCF and UN bodies are also located in the building.
- ② IFEZ Promotion Center is located on the 33rd floor.

Answer to Last Edition's Quiz

Ganghwado Island

Winners: Michael, Kim NA-yeon



INCHEON NOW. READERS' LETTERS

Search

Lynskey (Harmony-ro)

After reading the article in <Special Space>, I went to Gungjung Samgyetang. It was really delicious. It was something I've never had before. Thanks, INCHEON NOW.

Nigel (Central-ro)

<Tradition> The article was impressive. I learned that people used various tools to beat the heat in summer. I bought a bamboo wife at an online shop.

Sophia (Hambagmoe-ro)

I love going to theaters, but I couldn't because of COVID-19. After reading the article about the 'Drive-in Theater,' I went there with my husband last week. I have never had such an experience before, and it was so amazing and fun.

These are comments from our readers about the last edition. <INCHEON NOW> is waiting to hear what you have to say. Share your thoughts about this edition with us by sending your comments to <goodvoice@korea.kr>. We will randomly select people who sent comments and suggestions for gifts.

Send

