

FUTURE OF ECO-FRIENDLY RESOURCE CIRCULATION STARTS FROM INCHEON



Metropolitan landfills are closing



Waste
Reduction



Resource
Recycling



Eco-friendly
Resource
Circulation Facility



In-city Landfill,
Eco-land

Great Transition in Eco-friendly
Resource Circulation Policy,
Made with Citizens



Special Eco-City, Incheon



INCHEON NOW

Incheon Metropolitan City
English Newsletter

2021 Sep + Oct

Vol. 71

since 2010

Recipe

*In Incheon, there are many spaces to feel the tradition of Korea.
From traditional marketplaces where sellers give away their affection
and throw-ins with the goods they sell as a time-honored tradition
to traditional hanok cafés that integrate hanok (Korean house) and
café to create something new.
Let' feel the genuine taste of Korea on the occasion of Chuseok,
Korean Thanksgiving and one of the biggest holidays, in September
and through the tour of traditional Incheon.*



Cover Description

Sinpo International Market, one of the traditional marketplaces in Incheon.

Set + Oct / Vol.71	Special Theme	04	Visiting Traditional Markets in Incheon, Filled with Korean Tradition and Hospitality
	Feel Incheon	10	Traditional Korean Grace Felt in the City Center <i>Traditional Hanok Café in Incheon, Perfect for a Leisurely Moment</i>
	Trend Issue	12	‘K-Bio LabHub’ Comes to Incheon
	Incheon Issue	14	Proper Recycling is a Must, Not an Option Bring your Plastic to ‘Incheon e-Eum Shop’
	6 Way	16	Six Competitive Points of Incheon <i>Human Resources with International Capacities and Perspectives</i>
	Together	18	Unwavering Spirit of Korean People for the Future, Essential Quality for Educators
	Road Tour	22	Enjoy the Summer in Incheon using Call Bus <i>Series 5. Incheon City Tour (Ganghwa History and Healing Tour)</i>
	On-Incheon	26	Autumn Scene of Incheon Online
	Incheon Quiz	28	Questions for Evaluating Knowledge on Incheon's Policies
	Culture	30	Around the World at Your Fingertips
	News	32	Incheon City News
	Information	34	Latest Information on COVID-19
	Real Life	36	Celebrate Happy and Thankful Chuseok <i>Various Stories Related to Chuseok</i>
	Incheon Goods	38	Taste of Incheon, Liquors of Incheon
	Event	39	Instagram Event

Publisher by Incheon Metropolitan City

Publisher Mayor of Incheon Metropolitan City

Editor in Chief Bong-hoon Shin

Managing Editor Sang-hyun Baek

Team Manager Jin-kuk Kim

Planning & Editing Eun-jeong Choi

Tel +82-32-440-8305

Website www.incheon.go.kr

E-mail prman@korea.kr

Design & Print Westco **Tel** +82-32-423-1988

Visiting Traditional Markets in Incheon,

At traditional markets, you can feel the hospitality and high spirit of Korean people. You can buy high-quality products at low prices and find many fresh fruits, meat, rice cake, tteokbokki (stir-fried rice cake), twisted breadstick, etc. The market is spirited with resonant voices of the merchants calling customers and customers bargaining in every corner.

The marketplace that has been there for a long time is full of affection. Let's take a look at traditional markets that embrace us with unchanging affection.

List of Incheon Traditional Market Tours

Moraenae Market

Simpoo International Market

Songhyeon Market

Ongnyeon Market

Gajwa Market



Filled with Korean Tradition and Hospitality

Satisfying the Heart

Moraenae Market

Address

42-8, Hogupo-ro 810beon-gil,
Namdong-gu



The market started with a few stores in 1984 and has continued to operate for over 30 years, growing into its current size. The market was given a demolition notice due to the construction of high-rise apartments nearby, but merchants worked together to keep the market open. It is located between the apartment complex and the forest of buildings, mostly on the main street. Dozens of stores are lined in a row. Moraenae Market offers great excitement to the eyes and mouth along with the pleasure of shopping, bearing comparison with large shopping malls. It started as a wholesale and retail market for agricultural products but currently carries all types of goods from clothes to home appliances, furniture, dishes, bedding, jewels, various industrial goods, livestock and fishery products, food, and fruits. It is basically a general market. The scale is one thing, but the food is another. All



those who visit the market are fascinated by the food it has to offer. It is lined with gastro-ventures, and the prices are reasonable. From flour-based dishes of various types and flavors to sliced raw skate salad introduced on television programs and handmade sweet rice puffs that you can't find in supermarkets - the place is filled with delights that will please your palate. Thanks to its excellent quality, low price, and pleasant shopping environment, it also attracts many foreigners. You will leave the market with hands full of shopping bags and piles of small pleasures.



Sinpo International Market is Incheon's first modern permanent market, which was established as a window for foreign products and cultures coming into the nation during the port opening period at the end of the 19th century. It was also called the greens market that sells new vegetables brought in by Chinese farmers. Some aspects of the old greens market can still be felt from quite a few old stores that remain and from the sculptures placed inside the market. The market gradually became famous for food afterward. Today, it is a must-visit for travelers and couples from all over the country as well as the world. Sinpo International Market is particularly famous for glazed fried chicken bites, five-color dumplings, Korean sausage, tteokbokki (stir-fried rice cake), and crunchy balloon bread. 'Sinpo International Market

Incheon's First Modern Permanent Market

Sinpo International Market

Address

6-6, Sinpo-dong, Jung-gu

Use Your 'Onnuri Gift Certificate'

The Onnuri Gift Certificate issued by the Ministry of SMEs and Startups and the Small Enterprise and Market Service promotes demands for the traditional market and the local economy. It can be used like cash at affiliated markets nationwide and is accepted by 13 financial institutes at a 5% discounted price.



Glazed Fried Chicken Bites' is known as one of the three best glazed fried chicken bites of Korea, and it looks like ordinary fried chicken at a glance, but the taste is quite different. The second most famous food is crunchy balloon bread. It is baked directly in an oven with the skills accumulated for 40 years instead of using a machine. It offers the flavor as sweet as the sincerity that has been put into the bread. For this, the place becomes crowded with people lining up to buy the bread on the weekends.





A Promising Place

Songhyeon Market

Address

18, Hwadojin-ro 44beon-gil, Dong-gu

They used to call the place, Solgogae, meaning a hill with pine trees. 'Solgogae' in Chinese characters is '松岬 (Songhyeon)', which is how 'Songhyeon Market' got its name. Songhyeon Market was established at the beginning of the 1950s after the Korean War. Existing markets were bombed during the war, and this market came into being in ruins. Today, it is a market closely connected to the lives of people living close to the market, such as the large apartment complex to the north, in that it sells foods, fruits, and vegetables. It modernized its facilities by constructing modern shopping malls, organizing pavements around the market, and installing full-color LED signboards. Also, it developed Sky Park and Byeokcheon Well Park around the market to incorporate leisure and culture that can't be felt in other marketplaces. Benches were placed in the inner plaza to provide a space for communication between citizens, and the walls of the shopping mall are used for temporary exhibitions. Another pleasure of visiting Songhyeon Market is its proximity to famous food streets, such as the Korean sausage alley, cold noodles alley, and mackerel alley that can be reached in five to ten minutes on foot.



A Market Like an Old Neighborhood Friend

Ongnyeon Market

Address

462-164, Ongnyeon-dong, Yeonsu-gu

Ongnyeon Market, which is located in an area with a high concentration of apartment buildings in the main street of Ongnyeon-dong, is closely involved with the lives of the people living nearby. In 1994, merchants carrying agricultural products they grew, and fishery products started selling their goods one after another on the roadside after apartments were constructed in the area. The permanent market in the form of an alleyway was established later in 2004 by obtaining a permit for a cooperative association from the municipal government of Incheon.

Currently, 85 stores and 20 street vendors are cooperating with each other to maintain their livelihoods. The foods sold at the market are delivered from early-morning wholesale markets, such as the agricultural markets in Guwol-dong and Garak-dong, and Yeonan Pier, in that they are fresh and inexpensive. Stores are waiting for thrifty customers with a variety of goods from all kinds of fresh fruits to fresh fish, steaming bean curds that were just made, dried laver that was just roasted, handmade rice cakes, and assorted pancakes, and even ritual goods for the memorial service table, such as dried pollock, dried persimmon, chestnut, date, liquor, etc.



Center for Local Community

Gajwa Market

Address

26, Wonjeok-ro 96beon-gil, Seo-gu



When apartment buildings started to be constructed in the early 1970s, some street vendors began selling vegetables and fish to residents. The number of vendors increased gradually, and tents were set up to take a form of a market. Stores in Gajwa Market are lined in a row, making it convenient to shop, and the place is filled with spectacles and delicacies from the master of fish cakes boasting quick hands and hongdukkae (rolled) knife-cut noodles that you have to wait in line to get a taste of. It is the central market of the region. There's more. Gajwa market has a special theme. As a part of the culture and tourism type market promotion project, it adopted the 'comics' theme centering on the 'comics market' and the character 'Kaengdori' and renewed the signages. It also holds a comics festival every year since 2017, inviting comics artists to hold meetings or offer various attractions and interactive experiences such as busking and free caricatures. For the festival, the market was re-appointed for the culture and tourism type market promotion project in 2020. Gajwa Market is currently elevating its quality as a market dedicated to culture on the comics theme and is transforming into a safer and more pleasant market by continuing the repair of old arcades and installing more fire safety facilities.

Traditional Korean Grace Felt in the City Center

Traditional Hanok Café in Incheon, Perfect for a Leisurely Moment

‘Traditional hanok (traditional Korean homes) cafés’ are places where you can get a taste of Korean tradition. There are rows of them in Incheon. In the city center full of tall and polished buildings, traditional hanok cafés differentiate themselves through unique appearances and tranquility. Let’s take a look at Incheon’s traditional hanok cafés, a special space dressed in the Korean grace of ‘tradition’ in ‘cafés.’



Café ODAM

A neat design is added to the quiet and still frame of hanok. Café ODAM, opened in a hanok constructed in 1715 that was renovated recently, and it captures as many stories as the years that have passed. The stories include the ‘house of the Shim family of the Cheongsong clan that lived 300 years in Gajwa-dong,’ ‘living space of refugees during the Korean War,’ and ‘key space that led Gajwa school for peasants during the 1960s.’ Inside, a golden plaque that reads ‘Gwanhaegak’ comes in sight. Gwanhaegak is the old name of ODAM, and the description says, ‘The first place where electricity was introduced in Seo-gu that used to depend on candle lights and kerosene lamps in the past.’ These stories stimulate different sensitivities in us today. If you want to listen to the stories that hanoks have to offer together with a cup of coffee, visit ODAM.

Address 243-4, Janggogae-ro, Seo-gu



Jamigung Bakery

There is a hanok café that emits a flamboyant mood in the middle of the residential district of the city center. This place is called ‘Jamigung Bakery.’ It was a Korean restaurant before it was renovated into a café. While the exterior is characterized by wide roof tiles and the scale that spans across a two-story building, the interior is also filled with furniture that perfectly matches hanok to keep the traditional beauty alive. The interior is spacious and simple so that anyone can enjoy a moment of leisure over a cup of tea. As the name of the place goes, they sell many types of bread to suit the palates of many people. Jamigung Bakery also has a broad outdoor space with tables. Cooling off outside the café could be another way to enjoy the venue on a hot sunny day.

Address 38, Wondang-daero 819beon-gil, Seo-gu



Slow Mailbox

Follow the broad grassy road to a hanok café with a neat exterior, ‘Slow Mailbox.’ Like the name of the café, there is a slow mailbox that is actually in service. Choose the mailing date, one, three, or six months later, and send the mail. The ‘Slow Mailbox’ is famous for beverages and various types of bread. The garden with a pond outside the café adds to the elegance of the place. The full-glass window lets you enjoy coffee leisurely with a great outdoor view. The warm atmosphere and the fine taste of desserts also attract many people.

Address 60, Maneuigol-ro 195beon-gil, Namdong-gu



Dosol Museum

Inside the hanok village in Gilsang-myeon, Ganghwado Island, is a charming hanok café. The café with picturesque pine trees, ‘Dosol Museum,’ is also a gallery that holds exhibitions of famous artists. With an 8,000 won admission ticket, you can appreciate the works on exhibit. Due to this, the café is frequented by people who want to enjoy coffee as well as culture. It offers traditional teas, such as dates tea, ginger tea, and schisandra tea, handmade teas, such as flower petal tea, as well as desserts, such as dacquoise and red bean sherbet. The place boasts a broad premise with picturesque outdoor scenery, perfect for taking memorable photos. Also, the café offers the ‘Make Your Own Mug’ program, which prints pictures or photos on the mug, inside the café. We recommend enjoying the various cultural activities at Dosol Museum.

Address 52-71, Gilsang-ro 210beon-gil, Gilsang-myeon, Ganghwa-gun

Cafe

K-Bio LabHub

The 'K-Bio LabHub' that aims at fostering Korea's representative bio startups will be established in Songdo, Incheon. It will make Incheon the leader of the bio industry.

On July 9, the Ministry of SMEs and Startups selected Songdo as the candidate site for 'K-Bio LabHub,' which will foster Korea's representative bio startups. Eleven cities of Korea, including Incheon, Gyeonggi, and Daejeon, competed fiercely to host this.

K-Bio LabHub is an infrastructure development project that aims to provide general support for ▲ the infrastructure required for experiment, research, clinical test, and prototype production, ▲ startup supporting programs, and ▲ industry-academia-institute-hospital cooperation network, so that bio startups requiring advanced technologies especially relate to the diagnosis of infectious disease and development of new drugs can perform experiments, research, as well as clinical tests. It was inspired by 'LabCentral,' the bio startup supporting institution in Boston, USA.

A total of 250 billion won will be invested to complete in 2024 and operate in full scale from 2025.

Comes to Incheon

01

INCHEON, BEST PLACE TO BUILD THE KOREAN VERSION OF LABCENTRAL

Songdo is rated as the perfect candidate for establishing K-Bio LabHub, where the cooperative network between industry, academia, institute, and hospital is essential, since it is home to Korea's top bio-anchor companies, such as Samsung Biologics and Celltrion, along with hospitals and research institutes, such as Songdo Severance Hospital (scheduled to open in 2026).

Professor Kim Hee-chan of Seoul National University Hospital, the head of the Selection and Evaluation Committee, said, "We mainly looked for a site that can develop into a successful base like LabCentral in the USA and is appropriate for developing a cooperative ecosystem, such as universities, hospitals, and bio companies that bio startups need for growths. As a result, we picked Songdo, Incheon."

Incheon holds various conditions for the successful establishment of K-Bio LabHub. First, domestic and international companies, such as Dong-A Socio, BINEX, Samsung Biologics, and Merck, have invested in Incheon, starting with Celltrion in 2002. In addition, Celltrion and Samsung Biologics announced additional investment plans to expand their production scale even further.

Also, Incheon is the representative 'logistical and transportation hub' with well-equipped infrastructure, including the world-class Incheon International Airport, Incheon Port, expressways, and railroads. Currently, Incheon has secured 920,000 m² for industrial and research facilities inside Songdo Development Zone 11, planning to combine it with Zones 4, 5, 7 by 2030 to expand and develop the bio cluster up to 2,000,000 m².



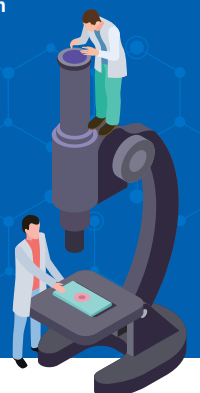
02

INCHEON ENVISIONS THE FUTURE OF BIO INDUSTRY

Incheon's K-bio LabHub will support startups in the bio sector within the region and develop the 'resource sharing system,' through which participants share required data or information and technology.

Also, Incheon will promote local branding so that people would think of Incheon when they hear the word 'bio' and K-Bio LabHub when they hear 'Incheon.'

Future Industry Division
☎ 032-440-3102





Proper Recycling is a Must,
Not an Option

**Bring your Plastic to
Incheon
e-Eum Shop!**

PLASTIC CAN BE A VALUABLE RESOURCE IF DISPOSED OF PROPERLY.

Plastic takes five seconds to make, five minutes to use, and five centuries to decompose. Because it is cheap and convenient, we throw it out readily after using it just once. The world has produced 9 billion tons of plastic products since the 1950s but recycled only 10% of it. 90% were left out on Earth, wandering around inside the bodies of animals, on land, sea, and the universe, doing harm to them.

Plastic bottles can be regenerated into plastic bottles and clothes when properly separated, disposed of, and recycled. Plastic bits, washed thoroughly and grouped by their types, are turned into cotton turfs used to fill blankets, padded coats, and dolls.

Plastic can be broken down to pieces but does not disappear from Earth. The solution is either we don't use it or we recycle it.

BRING YOUR PLASTIC TO INCHEON E-EUM SHOP FOR CASH REWARDS.

There is a resource recycling shop that gives cash for properly separating and disposing of plastic. The shop is called 'Incheon e-Eum Shop.' When you bring properly separated recyclable items to the shop, they reward you with a local currency called Incheon e-Eum Card Cashback or cash a month later. Retrieved recyclables are recycled entirely.

Using 'Incheon e-Eum Shop' is simple. Sign up for the service through the mobile application and visit the shop. The resource manager checks the type of recyclable items, weighs them, and enters points for the items.

Resource Manager Choi Jeong-ja said, "It feels like the environment and Earth are being revived when the recyclable items pile up through the participation of citizens. It feels great to see piles of recyclable items in the shop. Recyclable items are not wastes but resources. I hope more people join the policy of Incheon, which is known as the environmental capital."

Resource Managers manage recyclable items at the collecting facilities and guide visitors on how to separate and dispose of recyclables properly, how to use the shop, and about cash rewards.

Guide to using 'Incheon e-Eum Shop'



Hours

Tuesdays, Thursdays, and Saturdays,
2 p.m. – 6 p.m.

Items Collected

Transparent plastic bottles, colored
plastic bottles, plastic plate

Participating Shop Locations

Pureun Dure Consumer Cooperative
Guwol Shop (3, Yongcheon-ro
88beon-gil, Namdong-gu), Mansu
Shop (378, Guwol-ro, Namdong-gu),
Yeonsu Shop (19, Saemmal-ro 8beon-
gil, Yeonsu-gu), and Sora Station
Shop (75, Soraeyeoknam-ro 16beon-
gil, Namdong-gu)

Human Resources with International Capacities and Perspectives

Inha University, the cradle of talent boasting a tradition of more than 60 years; Incheon National University, which attracts excellent students since its transition to a national university; Yonsei University, a prestigious private institution that opened its campus in Songdo; and Incheon Global Campus are the home of talented human resources with global competences and sensibilities. Chadwick International operates a 1st to 12th-grade school program with well-equipped educational infrastructure and curricula. Cheongna Dalton School boasts the best educational environment, consisting of an elite educational program to foster talented people, a swimming pool, and even a horse-riding course. Also, over 1,800 research institutes in various fields, including biotechnology, centered in Songdo, Incheon, cooperate with companies and universities to actively carry out R&D.

Prestigious Educational Institutions in Korea and the World



인하대학교
INHA UNIVERSITY

INHA UNIVERSITY

Inha University was established in 1954 with the founding philosophy of upbuilding character, the pursuit of truth, and community service. It aims to become "the MIT of the East" through a project commemorating the 50th anniversary of Korean emigration to Hawaii. Currently, it stands out as a prestigious university that both Korean and international students want to attend. The talents fostered by Inha University have contributed enormously to the national development from the world's poorest country into one of the world's advanced economic power. Inha University plans to take the lead in fostering global talents who will pioneer the future of Korea.



인천대학교
INCHEON NATIONAL UNIVERSITY

INCHEON NATIONAL UNIVERSITY

Incheon National University aims to become 'The Only One' university rather than 'The Best' university globally. It has developed and operated various innovative programs, such as the 'Matrix College' in the education department, which reflects the demands in the field in its curriculum with a special focus on specific fields, and the 'Focused Research University' in the research department that conducts convergence research in connection with their major. It also strives to raise the national spirit by finding forgotten righteous soldiers who were active in the late Joseon Dynasty and applying for their rewards.



연세대학교
YONSEI UNIVERSITY

YONSEI UNIVERSITY INTERNATIONAL CAMPUS

Yonsei University International Campus introduced the RC (Residential College) education system, where students live in dormitories where living becomes a part of learning and vice versa. RC education aims to foster servant-leaders with creative capabilities by developing community consciousness through various programs encompassing culture, art, sports, and academic seminars. According to this scheme, Yonsei University International Campus was established to provide an optimal environment for RC education.



INCHEON GLOBAL CAMPUS

Incheon Global Campus is a national project for global education promoted by the Korean government. It was established to train next-generation talents who will lead educational innovation and various sectors, including economy, industry, culture, and art, to become the "world-class global educational hub." For this, the central government and Incheon invested approximately one trillion won and constructed a joint campus that can accommodate over 10,000 students to attract ten prestigious foreign universities.

Major Research Institutes



KOREA POLAR RESEARCH INSTITUTE

As the political and economic importance of the polar region increases worldwide, scientific research on the region is gaining more importance. The Korea Polar Research Institute is fully engaged in research to bring about the results that draw the world's attention based on the excellent polar infrastructure, including two scientific stations in the Antarctic, one scientific station in the Arctic, and the icebreaking research vessel ARAON.



KOREA INSTITUTE OF INDUSTRIAL TECHNOLOGY

The Korea Institute of Industrial Technology is a research institute centered on commercialization established to support industrial circles, particularly SMEs and medium-sized companies. The institute is making ceaseless efforts to lead this trend. While strengthening its capabilities for developing source technologies in three main research domains: root industrial technology, clean production system technology, and convergence production technology, the institute intensifies close field support for SMEs and medium-sized companies through three research institutes and seven regional headquarters.

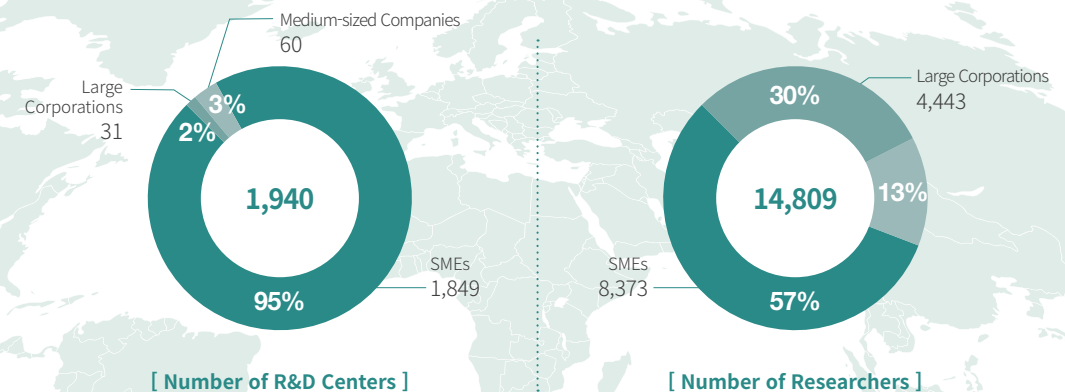


POSCO GLOBAL R&D CENTER

The POSCO Global R&D Center is responsible for technological innovation for the POSCO Family, taking a step further beyond the research of existing steel technology. It provides a total solution for customer product application technology by intensifying EVI (early vendor involvement) activities where it collaborates with customers from the beginning of all product developments. It is also actively developing next-generation convergence innovative technologies that will serve as the basis for new future growth engines for the POSCO Family by strengthening the industry-university-institute R&D network with companies and universities.

Current Status of Affiliated R&D Center

※ Korea Industrial Technology Association data as of the end of April 2021 (Unit: Number of Centers, Title)



04

interview



Unwavering Spirit of Korean People for the Future, Essential Quality for Educators

Murdo McNAB

Professor Murdo McNab (hereinafter, 'McNab,' 53) from Canada majored in pedagogy and came to Korea in 1996. He never imagined that it would, but he says Incheon is the place that made it possible for him to continue to take on challenges as an educator for all those years. McNab currently lives in Songdo, Incheon, teaching English at the Incheon Human Resources Development Institute and Sungkyul University. Let's hear the story of McNab as a citizen of Incheon who lived here for 24 years and an educator alongside his vision for the future.



Inha University where McNAB taught for 15 years.

BEGINNING THE LIFE AS AN EDUCATOR, INCHEON

After studying pedagogy in university, he was looking for a job in Canada. While sending out resumes through the Canadian system, he heard that native English speakers are wanted in Japan and Korea. He sent his resume by the introduction of a friend. On the next day, he received an email asking him when he can come to Korea. He was quite surprised at how quickly he received the reply. He chose to come to Korea, considering the possibility as an educator, and taught at Inha University for 15 years. His life in Incheon showed many possibilities as an educator. "I was able to meet a variety of people from adults to middle and high school students and those in various professions in class. It was an excellent experience as an educator." It was easy to see that he was a serious educator while he talked. Professor McNab says his first impression of Incheon was quite different from now when he arrived here. Songdo was a city of the future that did not exist yet, and Yeonsu-gu was under development. He was impressed by how Incheon developed and how it planned for the future and made everything possible. He said that Incheon is one of the best cities in the world and that it was pretty impressive to see people working so industriously in their respective positions. "Everyone from doctors to professors, technicians, chefs, and movers work so hard. I think they have this hardworking spirit embedded in their DNA. I respect that aspect of them. You can't feel this in other countries." His affection for Korea was obvious as he spoke.



KOREAN EDUCATION, DREAMING OF THE FUTURE

Education in Korea was a new concept to Professor McNab. Since there was nothing like hagwon (private educational academies) in Canada, he had difficulty explaining what a hagwon is to his family and friends back home. Today, Canada has academies like hagwons such as tutoring programs, and his family and friends began to understand what hagwon is. Professor McNab says that the spirit that Koreans have for education is something to learn from. "I see Koreans invest in education. Whenever technologies with new concepts come out, Koreans don't give up or complain. They always make efforts to learn about them to become leaders of the future. That's quite impressive. When Hyundai Motor built Pony for the first time, people didn't trust Hyundai cars. But many people now prefer Hyundai cars. Japan's SONY was the most preferred home appliance product 30 to 40 years ago, but now, Samsung and LG products are the most popular. From these observations, I see Korean people's unwavering spirit in education for the future. It always impresses me to see how they educate people to become the leaders of the tomorrow whenever new technologies are released."

LIFE IN INCHEON 2.0

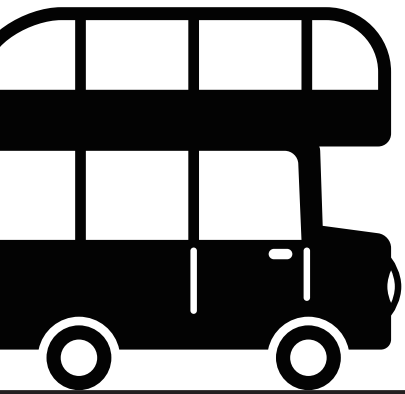
He married a Korean woman he met in Korea 20 years ago. Two years ago, he chose to emigrate to France for a new challenge. As a citizen of Canada and the UK, he settled down in a small city in France, planning for a new life in Europe. However, he saw the difference between his life there and Korea in terms of quality of life and various systems. After a few months, COVID-19 began to spread worldwide, and he returned from France to Incheon. He says he is quite satisfied with his choice to return to Incheon.

He recently opened an educational business. He was developing a website for online classes and met with many great students through the online courses. Students are the driving force of his life. "I worked as an educator only for a long time. I'm challenging the educational business now. Building a website was the most difficult challenge for me," said McNab with a smile, and he added, "Incheon is a city of opportunities for educators," giving a thumbs up. We support Professor McNab, a citizen of Incheon, for his new challenge.



We hope his new challenge in Incheon, the land of opportunity, will result in success.

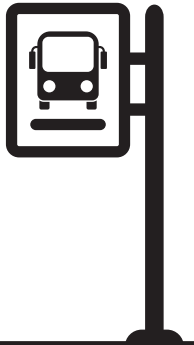




ENJOY THE AUTUMN IN INCHEON USING CALL BUS

Series 5. Incheon City Tour(Ganghwa History and Healing Tour)

Ganghwado Island, which is referred to as a 'roofless museum,' retains history and culture that continues from the prehistoric era to Biryu Baekje, the anti-Yuan movement during the Goryeo Dynasty, and the modern enlightenment period along with the unexplored regions in nature, such as Jeondeungsa Temple. Let's take a look at the Ganghwa Course of Incheon City Tour Bus, an inexpensive and comfortable way to take a look around major historical sites.



Ganghwa History Tour

- Geomam Station
- Ganghwa Peace Observatory
- Gyodong Daeryong Market, Gyodong Swallow's Nest
- Ganghwa History Museum, Dolmen in Ganghwa
- Goryeo Palace Site, Oegyujanggak (Outer Royal Library)
- Geomam Station

Program Details

Once a week (Saturday)
Approximately 8 hours and 30 minutes
(9:00~17:30)

Boarding Location: Exit 1 of
Geomam Station (Airport Railroad)

Fees

15,000 won Adult
12,000 won Children (5-years-old ~ High School Students), Senior Discount, Incheon Citizens Disabled, Persons of National Merit

※ Free for Children under the age of five,
Discount for one person accompanying
the person with disability class 1-3

※ Groups (10 or more): 20% discount

From the Era of Dolmens to the Age of Peace Ganghwa History Tour



Ganghwa Peace Observatory

The observatory is located in the northern region of the Civilian Control Line. Here, you can see North Korea through a telescope, such as Gaeseong Industrial Complex on the right, the site designated for Nadeul Island that is a neutral area and the disguised village for propagation, the tower of Gaeseong Industrial Complex, and Songaksan Mountain on the left.

Hours Every Day, December ~ February 09:00-17:00
Every Day, March ~ November 09:00-18:00

Admission Adults 2,500 won / Adolescents and Military 1,700 won / Children 1,000 won

Address 797, Jeonmang-daero, Yangsa-myeon, Ganghwa-gun, Incheon

Information 032-930-7062

Gyodong Daeryong Market

During the Korean War, residents of Yeonbaek-gun, Hwanghae-do temporarily fled to Gyodongdo Island. They opened a small market similar to the Yeonbaek Market in their hometown to eke out a living. This became Gyodong Daeryong Market.

Address 35, Gyodongnam-ro, Gyodong-myeon,
Ganghwa-gun, Incheon



Gyodong Swallow's Nest

You can enjoy VR content using the latest ICT, appreciating Gyodong's history and culture. When you visit major attractions and collect stamps using your smartwatch, you can use them at stores on Gyodongdo Island.

Hours Every Day, 10:00-18:00 (Closed on second and fourth Mondays every month)

Address 20-1, Gyodongnam-ro, Gyodong-myeon,
Ganghwa-gun, Incheon

Information 032-934-1000



Ganghwa History Museum

Ganghwa History Museum was established to systematically exhibit, preserve, and study the history and culture of Ganghwado Island from the prehistoric era to modern and contemporary times centered on the artifacts excavated in Ganghwa.

Hours 09:00-18:00 (Closed on Mondays)
Admission Adults 3,000 won / Children, Adolescents, and Military 2,000 won
Address 994-19, Ganghwa-daero, Hajeom-myeon, Ganghwa-gun, Incheon
Information 032-934-7887



Goryeo Palace Site

This is the site of a Goryeo palace, used for 39 years from 1232 (King Gojong 19) when Goryeo moved its capital from Gaegyeong to Ganghwa to fight back the Mongolian invasion until 1270 (King Wonjong 11) when it returned to the original capital.

Dolmen in Ganghwa

Dolmen in Ganghwa was designated as a World Heritage in December of 2000. It is 260cm high, 710cm capstone length, and 550cm wide, and it is a typical northern dolmen from the Bronze Age.

Address 994-19, Ganghwa-daero, Hajeom-myeon, Ganghwa-gun, Incheon
Information 032-933-3624

Hours Every Day, 09:00-18:00 (Open Year-round)
Admission Adults 900 won / Adolescents, Children 600 won
Address 394, Ganghwa-daero, Ganghwa-eup, Ganghwa-gun, Incheon
Information 032-930-7078

Oegyujanggak (Outer Royal Library)

This is a library installed in Ganghwado Island to keep books related with the royal family in affiliation with Gyujanggak, which is the royal library.



Nature Satisfying Five Senses Ganghwa Healing Tour

Jeondeungsa Temple

Jeondeungsa Temple was constructed in 381 A.D. The name was originally Jinjonga but was reportedly renamed to the current title after Queen Jeonghwa Gungju, the wife of King Chungryeol of the Goryeo Dynasty, donated jade lanterns to this temple. The temple kept historical archives such as <Daejanggyeong (Complete Collection of Buddhist Scriptures)> and <Jojeong Sillok (Annals of Government Affairs)> and was protected by Joseon's royal family accordingly.

Hours Every Day, 08:00~18:30
Address 37-41, Jeondeungsa-ro, Gilsang-myeon, Ganghwa-gun, Incheon
Information 032-937-0125



Sochang Experience Center

As the center was remodeled from an old textile factory (Pyeonghwa Jikmun), which includes a hanok (Korean house) constructed in 1938 and a dyeing factory, it shows the history of the textile industry in Ganghwa at a glance. It is a space to experience various living cultures.

Address 8, Nammunan-gil 20beon-gil, Ganghwa-eup, Ganghwa-gun, Incheon
Information 032-934-2500

Samnang Fortress Trail

According to a myth, this is a 2,300m trail around the fortress that was constructed by three sons of Dangun Wanggeom (progenitor of the Korean nation) in one month. It is presumed to have been built during the Three Kingdoms period, based on the fortification method using coarse broken stones.

Address San 41, Onsu-ri, Gilsang-myeon, Ganghwa-gun, Incheon

Manisan Healing Forest

Manisan Mountain is located at the southwestern end of Ganghwado Island and the center of the Korean Peninsula. The distances from Manisan Mountain to Hallasan Mountain and Baekdusan Mountain are the same. It has a trail lined with a colony of class 1 pine trees.

Address 18, Manisan-ro 675beon-gil, Hwado-myeon, Ganghwa-gun, Incheon
Information 032-930-7068

Joyang Bangjik

Joyang Bangjik was a textile mill that led the textile industry of Ganghwa. It was closed in the 1990s and neglected for a long time until it was renovated into the Sinmunri Art Museum.

Address 12, Hyangnamu-gil 5beon-gil, Ganghwa-eup, Ganghwa-gun, Incheon
Information 032-933-2192



Ganghwa Healing Tour

- Geomam Station
- Jeondeungsa Temple, Samnang Fortress Trail
- Manisan Healing Forest
- Sochang Experience Center, Joyang Bangjik (Sinmunri Art Museum)
- Geomam Station

Program Details

Once a week (Sunday) / Requires approximately 8 hours and 30 minutes (9:00-17:30)

Boarding Location: Exit 1 of Geomam Station (Airport Railroad)

Fees

- 15,000 won** Adult
- 12,000 won** Children (5-years-old - High School Students), Senior Discount, Incheon Citizens
- 10,000 won** Disabled, Persons of National Merit

※ Free for Children Under Five, Discount for one person accompanying persons with disability class 1-3

※ Groups (10 or more): 20% discount

AUTUMN SCENE OF INCHEON ONLINE

Various platforms where you can enjoy the charm of Incheon through online.

The fifth is a video content where you can enjoy the beautiful autumn scenery of Incheon. From famous maple attractions to Dream Park, Gyeong Flower Maru, and the scenery of Free Park, we will introduce various videos of Incheon Autumn.



BEST SPOT TO APPRECIATE AUTUMN FOLIAGE IN INCHEON

This introduces the best spots for enjoying the autumn leaves in Incheon. It recommends Incheon Grand Park first. The maple tunnel stretching on both sides of the lake garden is known as the best spot to take a picture and is frequented by many visitors. The silver grass trail also creates a mood for embracing the intense vibes of the fall. The second place recommended in the video is Jeondeungsa Temple, which views the mountain and beautiful scenery covered in red and yellow leaves. Another spot to enjoy autumn colors in the city center is Songdo Central Park.



GYEYANG KKOTMARU

The video captured the scenery of Gyeong Flower Maru, covered by cosmos, chrysanthemums, and pink muhly that bloomed plentifully. It is a huge flower bed that depicted Gyeong-gu (borough) as a flowery hill, opened in May 2018. It comprises various sections, including a 122,694 m² trail, flowering plant garden, silver farm, and pumpkin tunnel. The place is frequently visited by family visitors that take a slow walk taking in the scent of flowers or taking pictures against the flower bed in the background.



AUTUMN OF INCHEON FROM SKY

This offers a view of fall in Incheon from a bird's-eye-view. This video, recorded from a unique perspective, shows Sorae Wetland Ecological Park displaying an exotic scene with the windmill in the middle of the reed field and Incheon Central Park, created in the city center, forming an unusual scenery and emitting brilliant colors through gray buildings. You can also enjoy the view of Jayu Park and Incheon Grand Park.



DREAM PARK WILDFLOWER GARDEN

The video captured the autumn scenery at the Wildflower Garden inside Dream Park. The Wildflower Garden is an ecological green space created to enhance the scenery and living environment of the metropolitan landfill and provide citizens with a place to rest and learn about the environment. It replays the sound of reeds trembling with wind and of footsteps of those who visited the garden to take a break from a tough day. Watching the video alone can bring peace to mind.



JAYU PARK

You can appreciate the scenery and sound of Jayu Park under colorful shades. It captured the entire view of Jayu Park, autumn leaves that turned red, and chrysanthemums in various colors. Jayu Park has a long history as the first western-style park constructed in 1888 along with the statue of General MacArthur and the Korea-USA Centennial Monument.

Questions for Evaluating Knowledge on Incheon's Policies

Try solving the 'Incheon Quiz.'

Learn about and remember Incheon for a long time through simple questions.

name :

PUBLIC LATE-NIGHT PHARMACY

Read the following dialogue and choose the appropriate answer to the questions.

- Mason: Henry, did you know that Incheon has increased the number of public late-night pharmacies to 13 locations?
- Henry: Public late-night pharmacy? What is that?
- Mason: It's a pharmacy that opens late at night. You can get specialized and emergency medicines even at late hours.
- Henry: Wow! Great! What are the hours?
- Mason: 10 p.m. to 1 a.m. It's basically opened all year round, but some pharmacies that can't open every day take turns to close.
- Henry: I see. That will help a lot of people!
- Mason: I know. They are quite accessible because they are available in eight gu (boroughs) all across Incheon.
- Henry: I will use it for sure if it's close.
- Mason: Good! You can get more information about late-night pharmacies through 119 and 120 call centers. You can also check the hours and locations of pharmacies through the homepages of the city and gu (boroughs).
- Henry: All right. Thanks, Mason!

Q. How many public late-night pharmacies are in operation in Incheon?

- ① 13 ② 24 ③ 10 ④ 9

Q. Which of the following does not provide the location of the public late-night pharmacies?

- ① 120 Call Center ② City and Gu Homepages ③ 1339 Call Center ④ 119

Q. What are the hours of public late-night pharmacies?

- ① 10 p.m. - 2 a.m. ② 11 p.m. - 1 a.m. ③ 10 p.m. - 1 a.m. ④ 9 p.m. - 3 a.m.

DRIVER'S LICENSE PROGRAM FOR FOREIGNERS

Read the following dialogue and choose the appropriate answer to the questions.

- Samuel: Annie, I'm trying to get a driver's license, but it's so hard.
- Annie: Is it? Have you tried 'Wonderful Driving'?
- Samuel: No. What is that?
- Annie: It's a project that helps foreigners obtain a driver's license! It is hosted by POSCO E&C and Incheon Metropolitan Police Agency and is organized by Incheon YWCA. You can download the written test questions in various languages from the homepage. You can also watch online lessons there.
- Samuel: How much do you need to pay to download the written test questions?
- Annie: Due to the prolonging the COVID-19 situation, the materials available on the homepage are provided for free to support foreigners and multicultural families to prepare for their driver's license test easily.
- Samuel: Wow! That's wonderful. What languages are available?
- Annie: The homepage supports ten languages, including English, Chinese, Japanese, Vietnamese, Thai, Indonesian, Mongolian, Cambodian, Russian, and Filipino (Tagalog).
- Samuel: I see. I should check it out!
- Annie: You should. You can find more information at the Wonderful Driving homepage (www.wonderfuldriving.com).

Q. What is the name of the program that helps foreigners obtain a driver's license?

- ① Driver's license support project for the disabled ② Wonderful driving
③ Welcome driving ④ Road traffic project

Q. What is the price for using the Wonderful Driving website?

- ① 10,000 won ② 100,000 won ③ 50,000 won ④ Free

Q. Which language in the following is not supported by the website?

- ① Japanese ② Vietnamese ③ Spanish ④ English

Around the World at Your Fingertips

Matinee Concert <Romantik Strasse> IV

: White Night, Never Ending Night

A world tour through music begins. The 'Romantik Strasse' (Romantic Street) in southern Germany maintains the medieval scenery intact. It became the motif for the name of the 2021 Arts Center Incheon's matinee concert. As its name suggests, the 'Romantik Strasse' gives the feeling of traveling worldwide through music. There will be a total of four concerts this year, each with a special guest. On October 27, the last concert for this year will raise its curtain. In this concert titled 'White Night, Never Ending Night,' pianist and host Kim Jung-won, and pianist Ilya Rashkovskiy will perform together.

Ilya Rashkovskiy made his debut at the age of eight. Since then, he has been recognized for his skills on the international stage through the most prestigious competitions in the world. He has been widely acclaimed for his recital performances on tours around the world, including Japan, Germany, and France, and as he expanded his footing in the music circles. After winning international competitions, Kim Jung-won, a famous pianist from Korea, contributed enormously to Korean classical music as a professor and general art director. In this concert, the two people will perform on the same stage. Kim Jung-won will perform solo 'Autumn Song' from Tchaikovsky's <Four Seasons>, and the two will perform 'Rachmaninoff Suite No. 1 and 2 for Two Pianos' together. We look forward to their outstanding performance, which will move the hearts of the audience with each note performed by their delicate touch.

+ The performance schedule is subject to change due to COVID-19-related circumstances. Please check in advance by telephone or homepage.



Date: 11 a.m., October 27, 2021
Ticket Price: All seats 20,000 won
Venue: Arts Center Incheon Concert Hall
Homepage: www.aci.or.kr
Information: 032-453-7700



Date: 11 a.m., October 28, 2021
Ticket Price: All seats 20,000 won
Venue: Haenuri Hall, Bupyeong Art Center
Homepage: www.bpcf.or.kr
Information: 032-500-2000



Date: 4:30 p.m., September 19, 2021
Ticket Price: All seats 10,000 won
Venue: Elim Hall, Elim Art Center
Homepage: www.elimartcenter.co.kr
Information: 032-289-4725



Date: July 29 - October 24, 2021
Ticket Price: Free
Venue: Open Museum, B3, Incheon City Hall Station
Homepage: www.incheon.go.kr/museum
Information: 032-440-6749

BRUNCH CONCERT WITH SEO HYEON-JIN <SHALL WE DANCE?> - MADNESS, TERRIFYINGLY BEAUTIFUL

The stage is open for a beautiful 'dance' performance at Haenuri Hall of Bupyeong Art Center. 'Shall we Dance?' is a brunch concert intending to alleviate the gloomy atmosphere due to COVID-19 and will be held four times, two times in the first and second halves, respectively. The third concert will feature Saint-Saens's 'Danse Macabre' and Ravel's 'La Valse' under the theme of 'Madness, Terrifyingly Beautiful.' Performers and dancers recognized for their skills in their fields will participate to please eyes and ears. Jeh Hwan-jeong, who holds a Ph. D. in dance and is currently a professor at the Korea National University of Arts, participates as the dance director, and Son Il-hoon, an internationally active composer, as the music director to broaden the spectrum of the concert. We recommend that you feel the warm comfort through cultural events with dance and music.

SUNDAY CONCERT - THE STRINGS STRING QUARTET

The classical group, 'The Strings,' is coming to Incheon. 'The Strings' holds a regular concert every year and comprises four members: violinists Yoo Jin-seop and Lee Seon-jin, violinist Kim Hyeon-seok, and cellist Oh Ji-hyeon. The quartet has attracted great attention and recognition by holding special creative concerts through various compositions ranging from solo to chamber orchestras centered on strings. In this concert, they will perform Borodin's String Quartet No. 2 and Beethoven's String Quartet No. 11, Op. 95. The Strings is determined to provide classical performances that audiences of all ages can enjoy together. You are invited to their dream stage.

'INCHEON OF THE MOMENT' EXHIBITION

Incheon Metropolitan City Museum is holding the 'Incheon of the Moment' exhibition at the Open Museum at Incheon City Hall Station. This exhibition will present photographs donated to the museum by Park Keun-won, a veteran photojournalist who worked for Kyeonggi Ilbo, Incheon Ilbo, and Kiho Ilbo. Most photographs shed light on Incheon in the 1960s-1980s. The exhibition, made up of three parts, 'People, Look', 'Event, Record', and 'Incheon, Capture,' shows the image of Incheon that has continuously changed and the people who lived in Incheon at the time. Those brief moments have become eternity in these photographs. Remember Incheon in the past and think about the meaning while viewing the exhibition.

News Brief

This month's city hot news



Meet Independence Movement Sites and Independence Fighters in Minecraft!

Incheon is promoting 'Incheon Craft 1945' (Subtitle: Hurray for the Independence of Korea) using a popular metaverse game, 'Minecraft,' on the occasion of the National Liberation Day on August 15. Incheon will release the 'Incheon Craft 1945 Map' on National Liberation Day on August 15, and host an open server* event so that Minecraft users can meet important independence movement sites and independence fighters of Incheon. Those who wish to participate in the open server event, which will continue until September, can access the server, photograph yourself holding the Taegeukgi (Korean national flag) item, and leave a comment with the text, 'Hurray for the Independence of Korea' and a photograph or video on the post announcing this event on Incheon's official social media page (Instagram, Facebook) or upload them to your own social media page with the required hashtag (#IncheonCraft). The 'Incheon Craft 1945 Map' reproduced important venues for the independence movement in Incheon, such as ▲ Changyeong Elementary School ▲ Dap-dong Cathedral and ▲ Hwangeo Marketplace in cyberspace. Independence fighters related to Incheon, such as ▲ Kim Gu (Baekbeom) ▲ Sim Hyeok-seong ▲ Kim Myeong-jin and ▲ Yoo Bong-jin are characters available in the

game for users to experience the history of the independence movement for the Republic of Korea.

Incheon Officially Launches Korea's First Smart Tourist City

Incheon launched a smart tourist city equipped with advanced technologies.

Last year, Incheon was selected as the city for Korea's first smart tourist city pilot project through a public contest hosted by the Ministry of Culture, Sports, and Tourism and the Korea Tourism Organization. Following the selection, Incheon developed an integrated platform and infrastructure for the tourist city in the open port area in Jung-gu by cooperating with a total of nine private consortiums including Incheon Smart City Co., Ltd. Here, citizens can use ▲ the 'Incheon e-Z' application (app) that lets them conveniently travel through the open port area with a single app, ▲ the AR and VR augmented contents that reproduced historical figures and the streets of the past and ▲ seamless public wi-fi connection. Incheon e-Z app offers many features, including making reservations and paying for mobilities, such as Incheon City Tour, Sea Train to Wolmido, and Open Port Story Bicycle, using and paying for locker services, translations, and tax-free shopping.

Incheon Tests All Taxi Drivers for COVID-19

Incheon conducted 'COVID-19 Total Tests' for all of the approximately 13,600 taxi drivers within its jurisdiction.

Since many customers, including those coming from abroad, use taxis, owner-driven taxi unions and corporation-owned taxi unions participated in

the COVID-19 screening test cooperatively for the safety of citizens.

All taxi drivers of Incheon must receive pre-screening by August 20, and should a taxi driver be found to have COVID-19 while violating this, they are scheduled to be punished by a fee of 100,000 won and a 12-month suspension for all municipal subsidies (call fees, credit card commission, etc.).

Students of Incheon Global Campus (IGC) Become Friendly Mentors for Children

Students of the Incheon Global Campus participated in the 'IFEZ Happy Study Room Season 3' organized by the Incheon Free Economic Zone Authority (IFEZA) as mentors for children. Twelve students from the State University of New York Korea and Ghent University served as mentors for the children of the Happy Study Room last year and this year, helping them with their studies, talking about their career choices, and sharing their experiences. The IFEZ Happy Study Room project renovates and repairs study rooms for children from more impoverished families in the old city center to provide an environment to nourish their dreams. The project has been carried out by the Incheon branch of Green Umbrella Childfund Korea with support provided by IFEZ's tenant companies.

Completion of Solar Farm Generating 106,000kW Annually in Cheongna International City

farm facilities, installed at Cheongna BRT Garage in Cheongna International City, began full operation for power generation. Construction started in March and was completed in five months. The solar power generation facilities, installed on the roofs of the Administration

Building and Repair Buildings 1 and 2, have a capacity of 80.58kW and generates 106,000kW of electricity each year. This will save approximately 14 million won in electric bills, reduce 47.5 tons of greenhouse gases, and match the effect of planting 7,200 thirty-year-old pine trees. Incheon is planning to install solar panels with the capacity of 140kW at Arts Center Incheon next year.



Bupyeong Camp Market, Fence Down and Open around the Clock

Bupyeong US Army Base Camp Market, which had closed its doors for the past 80 years, will be open to all citizens. Incheon decided to pull down the fences and barbed wires, approximately 320 m in length, and installed along Gyeongwon-daero (Blvd.) and Annam-ro (road) in Bupyeong-gu (borough), on the boundary of the baseball park site (32,800 □) in Area B of the Camp Market, opening the place around the clock.

This place, surrounded by fences, is currently accessible through the gate from 9 a.m. to 5 p.m. Incheon decided to remove the fences and install stairs as a passage for citizens near 2001 Outlet Bupyeong, connected to the baseball park site in Camp Market. Twenty street lights and five CCTVs will also be installed so that citizens can access Camp Market safely, even at night. A detailed plan will be established this month to finalize the work, including removing Camp Market fences and installing facilities until November.



Latest Information on COVID-19



Guide to COVID-19 Screening Centers

If you have any symptoms, consult your nearest public health center, 1339 Call Center, or Michuhol Call Center (☎ 032-120), and visit a screening center for testing. Even if you do not have any symptoms, if a family member or person who lives in the same place as you has any symptoms, or if you visited anywhere with a confirmed case, it is recommended that you take the test. Incheon operates ten temporary screening centers in addition to public health centers in ten counties, boroughs, and hospitals. When visiting, use your personal vehicle if possible, and always wear a mask. The number of temporary screening centers can be increased or reduced as deemed necessary.

Current Status of (Temporary) Screening Center

Division	Location	Public Health Center	Operating Status	Operating Hours
Michuhol-gu	Juan Station (50m from Exit 1 of Juan Station)	Michuhol-gu Public Health Center	In operation	09:00~13:00 Week Days 09:00~17:00 / Weekends 09:00~13:00
Yeonsu-gu	In front of Songdo Michuhol Tower (Take Exit 3 of Technopark Station, walk 190m toward Homeplus, turn right and walk 50m)	Yeonsu-gu Public Health Center	In operation	
	Woninjae Station (Take Exit 3 of Woninjae Station)		Since July 15	
Namdong-gu	Central Park (Under the stairs of Incheon Culture & Arts Center)	Namdong-gu Public Health Center	In operation	
Bupyeong-gu	Bupyeong Station (Take Exit 7 of Bupyeong Station, walk 50m to Traffic Square)	Bupyeong-gu Public Health Center	In operation	
	Bupyeong-gu Office Station (Inside Bupyeong Sinteuri Park)		Since July 15	
Seo-gu	Geomam Station (20m from Exit 1 of Geomam Station)	Seo-gu Public Health Center	In operation	
	Seo-gu Asiad Stadium (Seo-gu Asiad Stadium)		Since July 13	
Gyeyang-gu	Jakjeon Station Public Parking Lot (176m from Exit 2 of Jakjeon Station)	Gyeyang-gu Public Health Center	Since July 13	
Jung-gu	Unseo Station (In front of Exit 1 of Unseo Station)	Jung-gu Public Health Center	Since July 15	

COVID-19 Vaccination Guide

You can make a reservation for COVID-19 vaccines through the 'Vaccination Reservation Site.' To learn more about eligibility to receive COVID-19 vaccinations and schedules, vaccinating institutes, how to check for or to report adverse reactions following vaccination, call Michuhol Call Center (☎120) any time of the day.

COVID-19 Vaccination Schedule

Target	Reservation Period	Vaccination Period	Vaccine Type	Place of Vaccination
Young Adults and the Middle-aged (18-49)	20:00, August 9 - 18:00, August 19 (*Requires reservation by the last digit of resident registration no.)	August 26 - September 30	Pfizer or Moderna	Vaccination Center Contract Medical Institute
Priority Groups among Young Adults and the Middle-aged	20:00, August 3 - 18:00, August 6	August 17 - September 11	Pfizer or Moderna	Vaccination Center
International Voyage Operators	Visit the designated public health center with seaman's certificate and employment contract	Prompt vaccination	Janssen, Pfizer, or Moderna	Janssen at Public Health Center, Pfizer and Moderna at Vaccination Center
75 or Over, Unvaccinated	Reserve individually for vaccination	Any time	Pfizer	Vaccination Center
60-74, Unvaccinated	August 2 - 18	August 5 - September 3	AstraZeneca	Health Center, Vaccination Center
Care Hospital and Facilities Inmates and Workers	Follow the consultation with the public health center	July 27 - August 31	AstraZeneca	Vaccination within the Organization of the Vaccinated or Vaccination on Visit

New Social Distancing Guidelines

Incheon enforces the administrative order that prohibits drinking and eating in outside spaces and parks from 10 p.m. to 5 a.m. of the next day from July 8. Violations are punishable by a fine under the 'Infectious Disease Control and Prevention Act.' Also, those who have been vaccinated must wear masks indoors and outdoors again. With the implementation of the 'Level 4 Distancing Scheme,' please observe quarantine guidelines thoroughly and return home immediately after work and stay home where you are safe.

Level 4 Quarantine Guidelines, the Highest Level Social Distancing

Division		Revised Level 4 Social Distancing Quarantine Guidelines
Definition		Developed into a pandemic and people advised to return home immediately after work and refrain from going out.
Private Gathering		Four people before 18:00, two people after 18:00
Public Facilities	Gathering Prohibited	Bars/karaoke bars, clubs/nightclubs, pubs, dating bars, colatecs, dance halls, Holdem Pubs and Holdem Game Rooms
	Operation Limited to 22:00	Facilities in Group 1-3* such as karaokes, restaurants and cafes (until 21:00), indoor sports facilities, theaters, PC rooms, and private educational institutes *If accompanied by a person who completed the vaccination, it is possible to have a private gathering up to four people after 18:00 (until 21:00)
Events and Assemblies		Events prohibited; assemblies restricted except for 1-person protests *For weddings and funerals, only; relatives are allowed (relatives up to 49 people)
Sports Events		Sports events without spectators
Religious Activities		Allowed up to 10% of the capacity and up to 99 people; gatherings/events, dining, and lodging are prohibited

Celebrate Happy and Thankful Chuseok

Various Stories Related to Chuseok



At Chuseok, family members that have been apart for a long time get together to spend a good time over delicious food. We checked out the origin of Chuseok, related foods, and traditional games enjoyed during Chuseok to enjoy it more fully.



What is Chuseok?

Chuseok is on August 15 of the lunar calendar, and it is a national holiday that literally means the middle of autumn. It was initially a day to celebrate the biggest harvest during the year in the agricultural society of the past. On Chuseok, people hold memorial services for their ancestors from the early morning by setting the ritual table with crops and fruits harvested in that year to thank them for the good harvest. Also, family members and relatives that were apart for a long time gather to spend time together.

Delicacies over Chuseok



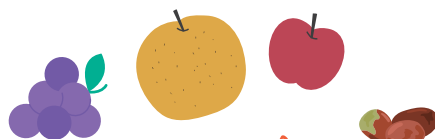
SONGPYEON (HALF-MOON RICE CAKE)

Songpyeon is a dish served on the ritual table as a token of appreciation for the year's harvest. It is a rice cake made in the shape of a half-moon and is steamed with pine needles. The fillings vary from beans to sesame seeds and chestnuts.



TORANGUK (TARO SOUP)

This is mainly enjoyed in Seoul, Gyeonggi-do, and Jeolla-do. It wishes for a healthy and long life. Rich in minerals and dietary fiber, taro helps offset the greasy dishes that can hurt the stomach and intestines usually served during Chuseok.



FRESH FRUITS

Fresh fruits of the autumn season in Korea include apples, pears, dates, and grapes. They are rich in flavor as well as nutrition and make a great gift.

Traditional Games Played on Chuseok



NEOL TTWIGI (KOREAN SEESAW)

This is an activity where two people, one on each end of a board placed on a bundle of straw in the middle, take turns to jump while facing each other.



SSIREUM (KOREAN WRESTLING)

This is a traditional game where two people hold each other by satba (thigh band) and use their strength and techniques to bring down each other.



GANGGANG SULLAE (CIRCLE DANCE)

It's a folk game where participants jump and dance in circles hand-in-hand under the moonlight along with a song.

TIP! Thinking about a gift for Chuseok?

Health Functional Food

Great for those who are interested in well-being and health. Choose by considering the person's health conditions to have the food, and check for the description of the food and the certification mark.

Gift Certificate

Gift certificates are given and taken with much less burden because they give the freedom to choose. They

can be used in many places, such as department stores, supermarkets, and online malls, and there is quite a large selection of amounts to choose from.

Korean Beef

This is one of everyone's all-time favorite gifts. Korean beef makes an excellent gift for Chuseok. Anyone of any age can enjoy it deliciously, and it can also be served on the ritual table.

Taste of Incheon, Liquors of Incheon



Incheon is home to traditional historical liquors as well as the latest beers.
Soft on the throat, it will intoxicate you with the charms of
Incheon after a few glasses.
Here are a few alcoholic drinks that fully captured the charms of Incheon.



Korea's First Rice Makgeolli Soseongju

When the law that allowed the production of makgeolli using rice passed, Incheon Makgeolli developed the nation's first rice makgeolli on January 11, 1990. The name came from Soseong Prefecture, the old name of Incheon during the reign of King Gyeongdeok of the Silla Dynasty. Full of natural sparkles, it tastes refreshing and pleasant but is also gentle and simple.

Tip 6% proof



Premium Traditional Liquor Samyangchoon

'Samyangchoon' drew attention after being selected as the official liquor for the Incheon Night toast during the sixth OECD World Forum. The name was coined by putting together 'Samyang,' which means to 'brew three times,' and 'choon,' which means that 'liquor tastes good when brewed in the winter and enjoyed in the spring.' Since it is a premium fermented liquor, brewed three times and matured for 70-100 days, it offers a clear aftertaste, unlike ordinary grain liquor.

Tip 12.5% proof



Gentle Scent of Ginseng Gohyang Makgeolli

Gohyang Ginseng Makgeolli is one of the representative makgeolli products of Chanwoomul Co., Ltd. It is high-grade ginseng makgeolli with an extract prepared by boiling six-year-old ginsengs of Ganghwado Island for 72 hours. Because it is made with high-grade ginseng extracts, the clear layer on the top with a light brown color of the ginseng harmonizes the soft, delicate scent of ginseng and the subtle fruit flavor of polished rice to touch the tip of the nose gently.

Tip 6% proof



New Specialty of Incheon Gaehangro Lager

Gaehangro Lager is a local beer that the Gaehangro Project Team, a union of merchants of Gaehang-ro, Jung-gu, Incheon, developed after seven months of planning and researching. It became a local brand of Incheon. It is not available at convenience stores or sold through a home-delivery service. You have to visit the shop near the open port or Gaehang-ro or the factory to purchase and enjoy the product. It is characterized by a clean aftertaste unique to lager beers, a familiar taste that anyone can enjoy.

Tip 4.5% proof

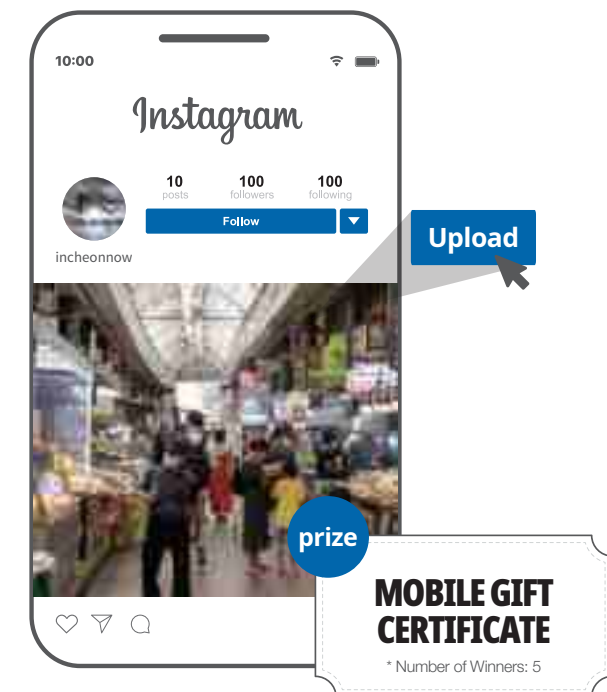
Incheon Now

@EVENT

Instagram

Go to a place described in the 71th edition of Incheon Now, take a picture as proof, and upload it to Instagram. We will choose five people by lot and send gifts.

Event Period Until October 25, 2021 *To be uploaded to Instagram



How to Participate in the Event



Grab Incheon Now and visit the 'Incheon Traditional Market' you like.



Take a picture with Incheon Now at the Incheon Traditional Market (The photo must show Incheon Now and your face.)



Add hashtag (# incheonnow) and upload to Instagram

* It has to be posted on Instagram until the announcement of the winner is made in order to receive the gift.

* If your post does not include the hashtag, you will be excluded from the lottery.