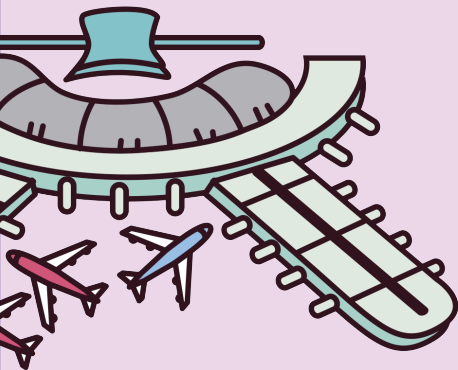


**Dream** of Incheon, the **future** of Korea

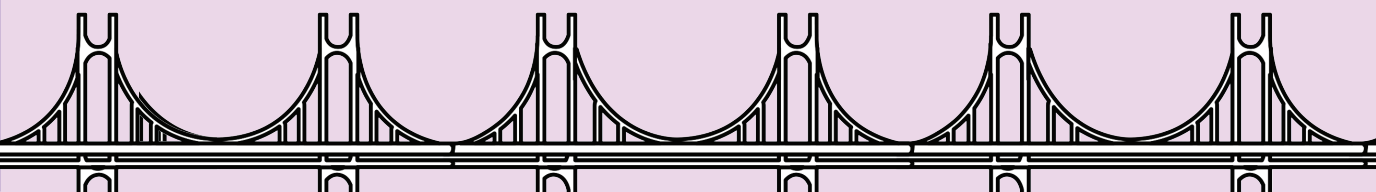


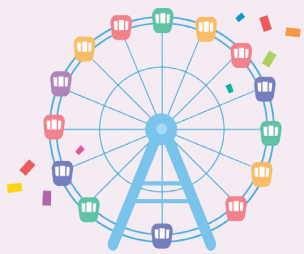
Guidebook for Living in Incheon For Foreign Residents

# Be the Incheoner



Incheon Metropolitan City





Guidebook for Living in Incheon For Foreign Residents

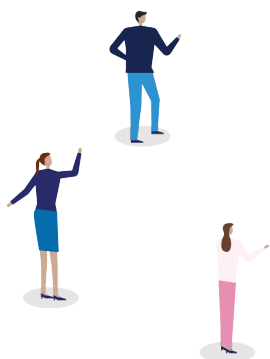
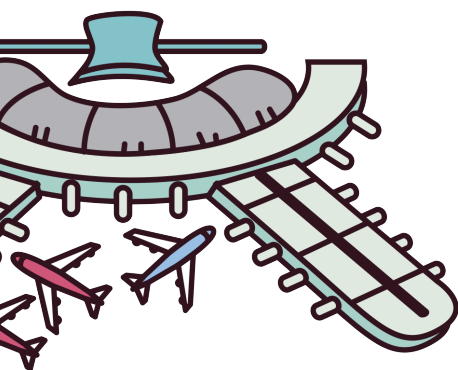
**Be the Incheoner**

**Dream** of Incheon, the **future** of Korea

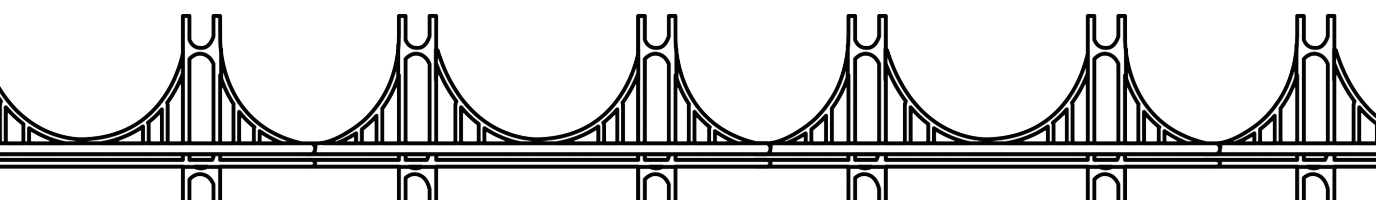


Guidebook for Living in Incheon For Foreign Residents

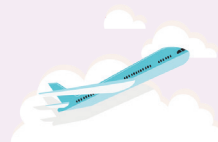
# Be the Incheoner



Incheon Metropolitan City



# Contents



## PART I

### Introduction to Incheon

|                                    |    |
|------------------------------------|----|
| 1. Pride of Incheon                | 6  |
| 2. Festivals and Events in Incheon | 7  |
| 3. Attractions in Incheon          | 9  |
| 4. Incheon City Tour               | 12 |
| 5. Major Food Streets in Incheon   | 13 |

## PART II

### Support Services for Foreigners & Multicultural Families

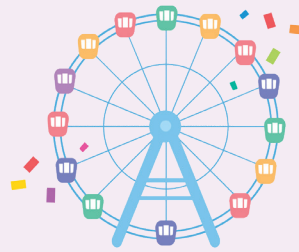
|   |    |
|---|----|
| 1. Support Services for Foreigners & Multicultural Families                       | 18 |
| 2. Programs and Institutions for Foreigners and Multicultural Families in Incheon | 19 |
| 3. Websites with Multilingual Support   | 24 |
| 4. Mobile Apps with Multilingual Support  | 26 |
| 5. Enrollment and Transfer Guide for Students with Foreign Nationality            | 26 |

## PART III

### Foreigner Registration and Sojourn

|                                    |    |
|------------------------------------|----|
| 1. Visa                            | 30 |
| 2. Foreigner Registration and Stay | 31 |
| 3. Domestic Residence Registration | 35 |





|   |    |
|---|----|
| 4. Incheon Immigration Office Information | 37 |
| 5. Tax Payment                            | 39 |
| 6. Leaving the Country                    | 39 |

#### PART IV

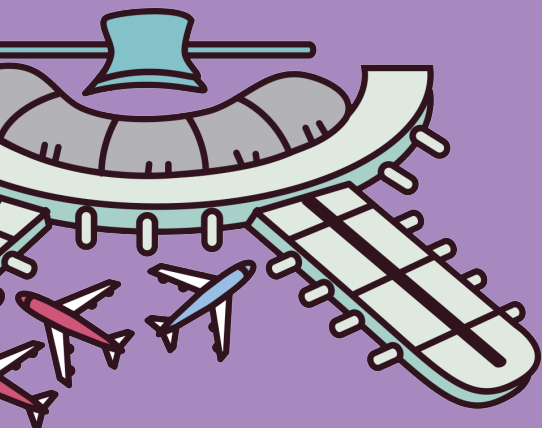
### Living in Incheon

|   |    |
|---|----|
| 1 Driving & Transportation (Driver's License & Public Transportation)   | 42 |
| 2. Public Transportation  | 44 |
| 3. Telecommunication  | 52 |
| 4. Household Waste Disposal   | 54 |
| 5. Use of Public Administration & Services<br>(Public Administrative Offices, Police Stations, Fire Stations, Post Offices, etc.) | 57 |
| 6. Economic Life  | 60 |
| 7. Education  | 64 |
| 8. Health & Medical Care (Medical Institutions, etc.)   | 68 |
| 9. Work & Labor (Labor Standards Act, Social Insurance, etc.)   | 80 |

#### PART V

### Information on related organizations

|                                      |    |
|--------------------------------------|----|
| Information on related organizations | 88 |
|--------------------------------------|----|

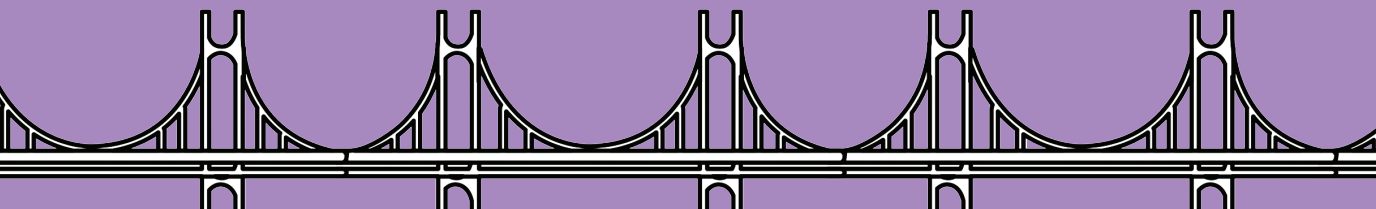


# I

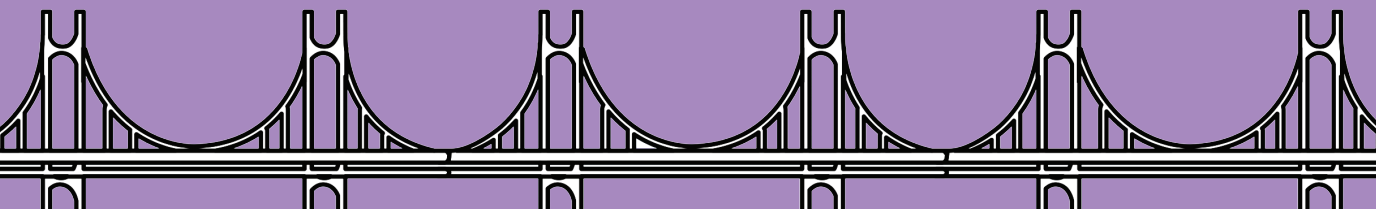
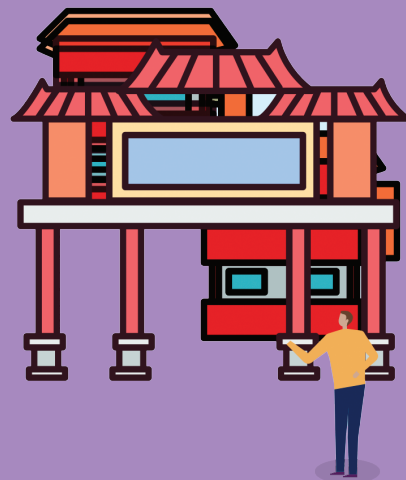
## Introduction to Incheon



Guidebook for Living in Incheon For Foreign Residents • Be the Incheoner



- 
- 1. Pride of Incheon
  - 2. Festivals and Events in Incheon
  - 3. Attractions in Incheon
  - 4. Incheon City Tour
  - 5. Major Food Streets in Incheon



# I

## Introduction to Incheon



## 1 Pride of Incheon

### 1 Port of Incheon

Incheon has served as a gateway to Seoul, the capital of Korea. It is the major trading port on the West Coast, connecting the Seoul Capital industrial zone, one of the largest industrial zones in Korea, and the central region.

• **Incheon Port Authority website:** [www.icpa.or.kr](http://www.icpa.or.kr)

### 2 Incheon International Airport

Korea's largest international airport opened on March 29, 2001, to help meet the air transportation demand in the Seoul Capital Area in the 21st century and play a role as a hub airport in Northeast Asia.

• **Incheon International Airport website:** [www.airport.kr](http://www.airport.kr)  
(available in English, Chinese, and Japanese)

### 3 Incheon Bridge

Incheon Bridge opened in October 2009 and is Korea's most prominent and longest bridge. It connects Songdo International City and Incheon International Airport on Yeongjongdo Island.

• **Incheon Bridge website:** [www.incheonbridge.com](http://www.incheonbridge.com)  
(available in English)

### 4 Incheon Free Economic Zone

A Free Economic Zone (FEZ) guarantees foreign investors' business and economic activities by creating systems and conditions differentiated from the other areas in Korea.

It was the first area designated as a FEZ in Korea in 2003 to implement the strategy to turn the area into a center of the Northeast Asian economy.

• **Incheon Free Economic Zone Authority website:** [www.ifez.go.kr](http://www.ifez.go.kr)  
(available in English, Chinese, and Japanese)



## 5 Incheon Asiad Main Stadium

It was the main stadium for the 17th Asian Games held in Incheon in 2014. In commemoration of the opening, a warm-up match between the national football teams of Korea and Kuwait was held. During the Asian Games, it served as the venue for the opening ceremony, closing ceremony, and track and field events.

• **Incheon Facilities Corporation website:** [www.insiseol.or.kr](http://www.insiseol.or.kr)

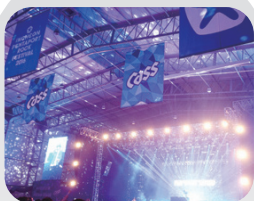


## 6 Five Islands of the West Sea

The five islands of the West Sea refer to Baengnyeongdo, Yeonpyeongdo, Daecheongdo, Socheongdo, and Udo, belong to Ongjin-gun and Ganghwa-gun. These five islands are geographically significant as they are located near the border. They are known for their unique natural environment and pristine ecosystems.

• **Ongjin-gun website (for information on culture & tourism):** [www.ongjin.go.kr](http://www.ongjin.go.kr)

# 2 Festivals and Events in Incheon



## 1 Incheon Pentaport Rock Festival

This festival is a significant rock festival featuring famous rock musicians from Korea and abroad.

• **Incheon Pentaport Rock Festival website:** [www.pentaport.co.kr](http://www.pentaport.co.kr)



## 2 Incheon Bupyeong Pungmul Festival

The festival is held annually to carry on and develop the tradition of Bupyeong, an agricultural community that saw an advancement of pungmul, referring to musical instruments used for traditional Korean percussion music.

• **Incheon Bupyeong Pungmul Festival website:** <https://portal.icbp.go.kr/bpf/>



### 3 Soraepogu Festival

At this festival, you can buy a wide variety of seafood and engage in diverse experiential activities and cultural events demonstrating the port city's style, flavors, and excitement.

• **Soraepogu Festival website:** [www.namdong.go.kr/soraefestival](http://www.namdong.go.kr/soraefestival)



### 4 INK (INCHEON K. POP CONCERT)

This concert is Incheon's iconic Hallyu (Korean wave) festival. With top K-pop singers in the performance lineup, it attracts a huge crowd, with fans worldwide.

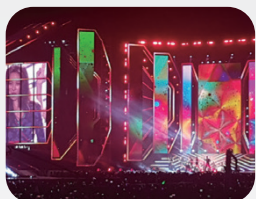
• **INK website:** [www.inkconcert.com](http://www.inkconcert.com)



### 5 Hwadojin Festival

Various performances based on local historical and cultural resources unfold at the festival.

• **Incheon Dong-gu Office website:** [www.icdonggu.go.kr](http://www.icdonggu.go.kr) (032-770-6920)



### 6 Munhaksan Mountain Music Performances

The peak of Munhaksan Mountain welcomes visitors to enjoy classical music performances along with the scenery of the islands and Incheon.

• **Incheon Metropolitan City website:** [www.incheon.go.kr](http://www.incheon.go.kr)



### 7 Incheon Open Port Culture Night

The cultural heritage sites in the open port cultural district between Chinatown and Sinpo Market are open at night for modern cultural performances.

• **Incheon Jung-gu Office's Incheon Open Port Culture Night website:** [www.culturenight.co.kr](http://www.culturenight.co.kr)

## 8 Other Major Festivals

| Period             | Event  | Description  |
|--------------------|--|--|
| April              | Jayu Park Culture & Tourism Festival         | Congratulatory performances and other events                                       |
| April-May          | Goryeosan Mountain Azalea Festival           | Promotion and sales of agricultural and fisheries products from Ganghwa            |
| September          | Incheon Landing Operation Wolmi Festival     | National security programs, photo exhibition, etc.                                 |
| September ~October | Ganghwa Ginseng Festival                     | Ganghwa ginseng experience program, etc.   |
| October            | Nokcheongja Kiln Site (Nokcheongja Festival) | Exhibition of nokcheongja (green celadon), pottery spinning wheel experience, etc. |
| October            | Samrangseong Historical Culture festival     | Performances, experiential activities, etc.art                                     |
| October            | Neungheodae Culture Festival                 | Performances, contents, experience events, etc.                                    |
| October            | Yeonan Pier & Blue Crab Festival             | Open-studio broadcasts, fusion gugak, concerts, etc.                               |
| December           | Jeongseojin Sunset Festival                  | Sunset event, congratulatory festivals, etc.                                       |



## 3 Attractions in Incheon

### 1 Bupyeong Underground Shopping Center

Bupyeong Underground Shopping Center, connected to Bupyeong Station, is known as a fashion center with several shops selling trendy clothes and accessories. It has set a world record as an underground shopping center with the largest number of stores.

• **Inquiries:** 032-523-9992

### 2 Wolmido Island

Wolmido Island contains a cultural district with walking trails and an amusement park. It is a venue of art and entertainment.

• **Inquiries:** 032-765-4169





### 3 Jayu Park

Jayu Park was established as Korea's first Western-style park. Here, you can see cherry blossoms in April and the Port of Incheon and Wolmido Island from the top of the park.

• **Inquiries:** 032-761-4774



### 4 Incheon Grand Park

As one of the largest parks in the city, Incheon Grand Park contains vast natural greenery and thematic parks (e.g., rose garden, zoo, and bicycle plaza).

• **Inquiries:** 032-466-7282



### 5 Open Port Street and Chinatown

The Open Port Street and Chinatown allow visitors to witness modern architecture from when the port was opened and experience foreign culture.

• **Inquiries:** 032-777-1330



### 6 Songdo Central Park

Artificial waterway was built in the park using seawater for the first time in Korea. There are water taxis and various trails.

• **Inquiries:** 032-832-3031



### 7 Gyeongin Ara Waterway

This waterway is the first canal to connect the downstream area of the Hangang River to the West Sea. In this vicinity, there's a long trail perfect for cycling.

• **Inquiries:** 1899-3650





## 8 Ganghwado Island

Ganghwado Island, also known as a roofless museum, has numerous scenic and historic sites (dolmen, Gwangseongbo Fortress, Jeondeungsa Temple, etc.) where you can witness the brilliant history and culture of Ganghwa. It receives endless streams of visitors as it is located close to Seoul.

- **Inquiries:** 032-933-3624
- **Website:** [www.ganghwa.go.kr](http://www.ganghwa.go.kr)



## 9 Sorae Port

As a port located in the city, Sorae Port presents a unique landscape, especially at the Sorae Wetland Ecological Park.

- **Inquiries:** 032-442-6887



## 10 Incheon Metropolitan City Museum

The Incheon Metropolitan City Museum opened in April 1946 as Korea's first public museum. It consists of three main exhibition rooms and other exhibition areas.

- **Inquiries:** 032-440-6750~1
- **Admission:** Free
- **Hours of operation:** 9:00AM~6:00PM
- Closed on Mondays, the day after a public holiday, and January 1st



## 11 Sudoguksan Museum of Housing and Living

The Sudoguksan Museum of Housing and Living, with exhibitions that present what Sudoguksan used to look like, is a place where you can experience what it was like to live in the area in the 1960s and 70s.

- **Inquiries:** 032-770-6130~4
- **Admission:** General 1,000 won, Youth 700 won, Child (5 to 12 years old) 500 won, Free for children aged four and under and seniors aged 65 and above
- **Hours of operation:** 9:00AM~6:00PM
- Closed on Mondays, Seollal (Lunar New Year's Day), Chuseok, and January 1st



## 4 Incheon City Tour

City Tour is a bus tour that allows Korean and foreign tourists to explore Incheon's most famous tourist attractions.

- City Tour website: <https://citytour.ito.or.kr/>  
(available in English, Chinese, and Japanese) ☎ 1899-0960

## Useful Tips for Touring Incheon

### Interpretation Service for Tourists ☎ 1330

The Korea Tourism Organization (KTO) provides this service to overcome the language barrier for foreigners traveling in Korea.

### Incheon Tour Website: [itour.incheon.go.kr](http://itour.incheon.go.kr) (available in English, Chinese, available Japanese) / ☎ 032-120

#### • Guided Tour in Incheon

- ▶ Free guided tours in Incheon ([culture-tour.incheon.go.kr](http://culture-tour.incheon.go.kr)) / ☎ 032-832-3031 (must book in advance)

#### • Tourist Information Centers

- ▶ Incheon Tourist Information Center: ☎ 032-832-3031 / Hours of operation 9:00 AM~6:00 PM (Closed on Seollal and Chuseok)
- ▶ Incheon International Airport Tourist Information Center:  
☎ 032-743-0011~3 / Hours of operation 9:00 AM~8:30 PM (open year-round)
- ▶ Incheon International Airport Terminal 2 Tourist Information Center:  
☎ 032-743-0043 / Hours of operation 8:30 AM~8:30 PM (open year-round)
- ▶ Wolmido Tourist Information Center: ☎ 032-765-4169 / Hours of operation 9:00 AM~6:00 PM (Closed on Seollal and Chuseok)
- ▶ Incheon Bus Terminal Tourist Information Center: ☎ 032-435-7257 / Hours of operation 9:00 AM~6:00 PM (Closed on Seollal and Chuseok)
- ▶ Incheon Station Tourist Information Center: ☎ 032-777-1330 / Hours of operation 9:00 AM~6:00 PM (Closed on Seollal and Chuseok)
- ▶ Ganghwa Island Manisan Mountain Tourist Information Center: ☎ 032-934-5565 / Hours of operation 9:00 AM~6:00 PM (Closed on Seollal and Chuseok)
- ▶ Gyeongin Ara Waterway Jeongseojin Tourist Information Center: ☎ 032-561-1339 / Hours of operation 9:00 AM~6:00 PM (Closed on Seollal and Chuseok)
- ▶ Sorae Port Tourist Information Center: ☎ 032-431-2213 / Hours of operation 9:00 AM~6:00 PM (Closed on Seollal and Chuseok)



## 5 Major Food Streets in Incheon

### 1 Yonghyeon-dong Multeombeongi Street

Anglerfish, commonly known as 'agwi' in Korean, is called multeombeong in Incheon. The fish used to make cheap soup has gained popularity as a delicacy. The chewy meat of the fish tastes perfect with crunchy bean sprouts and spicy seasoning. It is nutritious and good for arteriosclerosis and diabetes. It also helps with recovery from fatigue.

### 2 Hwapyeong-dong Naengmyeon Street

This area of the town is known for 'Sesudaeya Naengmyeon,' which means 'cold buckwheat noodles served in a washbowl' because of the enormous portion. It is a great way to satiate your hunger and craving for naengmyeon at an affordable price.

### 3 Bupyeong Haemultang Street

This street, lined with restaurants offering haemultang (spicy seafood stew), began forming around four decades ago. The restaurants also offer other dishes, so you can have a hearty meal there. You can also go shopping at Bupyeong Traditional Market or Bupyeong Underground Shopping Center.

### 4 Unyeon-dong Chueo Village

Chueotang (loach soup), made with loaches from the rice paddies of Yeollakgol in Unyeon-dong, Namdong-gu has been the locals' favorite. Today, there are many restaurants specializing in chueotang in the area, so it has come to be known as Chueo Village. Here, you can enjoy chueotang with hot stone-cooked rice and finish the meal with savory sungnyung (scorched rice water).



#### 5 Baendaengi Hoe-muchim Street at the Yeonan Pier

The marine center right next to Yeonan Pier mainly offers baendaengi (Sardinella zunasi) hoe-muchim (seasoned salad with raw fish) with addictive spicy flavor. Baendaengi is in season from late May to early July when they are plump and savory, making them perfect for making hoedeopbap (raw fish bibimbap).



#### 6 Deorimi Jangeo (Eel) Village

Ganghwa-gun Deorimi Jangeo (Eel) Village is located in Sinjeong-ri, Seonwon-myeon, under Gapgot, along the coastal road. As a place where the freshwater of the Hangang River meets the seawater of the West Sea, the village is filled with restaurants specializing in grilled eel. How about eating eel with a breathtaking ocean view?



#### 7 Dong-Incheon Samchi (Mackerel) Street

The history of Dong-Incheon Samchi (Mackerel) Street can be traced to the 'House of Inha,' with some fifty years of history and tradition, that relocated to Dong-Incheon around three decades ago. Jung-gu Office designated Samchi (Mackerel) Street as a food-specialized street.



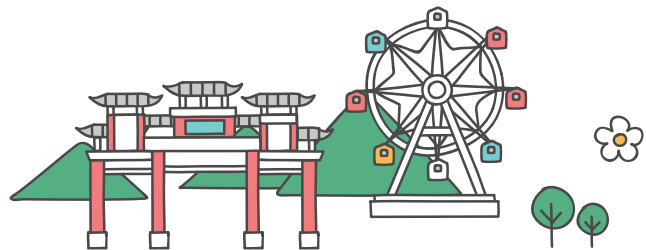
#### 8 Oepo-ri Blue Crab Village

Oepo-ri, Ganghwa-gun is famous for saeu-jeot (salted shrimp) and baendaengi (Sardinella zunasi) aside from blue crab. Blue crabs, in particular, taste tender and savory because they are low in fat.



## 9 Bukseong-dong Jajang-myeon Street

Chinese people came to Incheon and settled here after Korea opened the port in 1883. Chinese migrants developed jajangmyeon (noodles with black soybean sauce), a dish that could be prepared quickly and affordably. Incheon has a lot of places with first records of something, and it is also the place where you can taste the 'original jajangmyeon'.

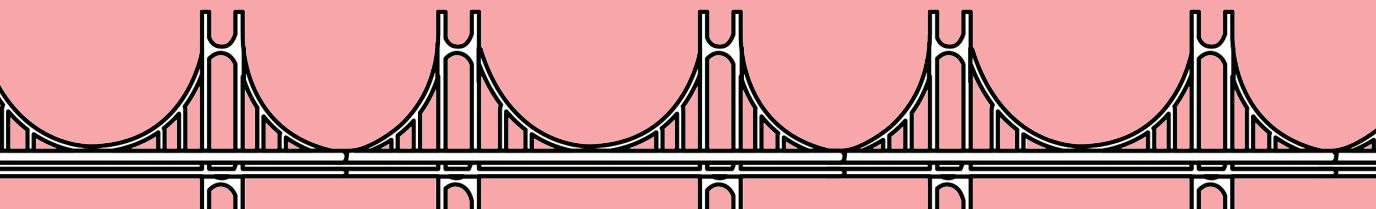
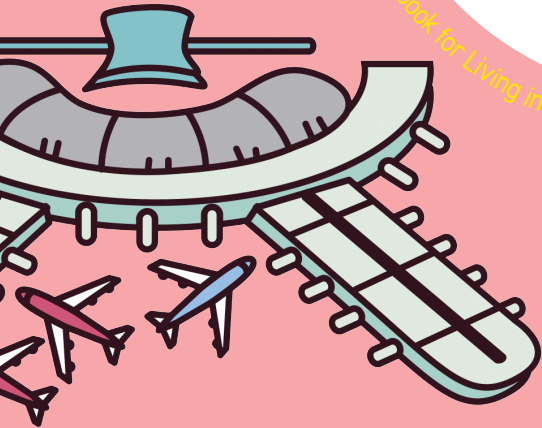


# II

## Support Services for Foreigners & Multicultural Families



Guidebook for Living in Incheon For Foreign Residents ● Be the Incheoner



- 1. Support Services for Foreigners & Multicultural Families
- 2. Programs and Institutions for Foreigners and Multicultural Families in Incheon
- 3. Websites with Multilingual Support
- 4. Mobile Apps with Multilingual Support
- 5. Enrollment and Transfer Guide for Students with Foreign Nationality





## II

### Support Services for Foreigners & Multicultural Families



### 1 Support Services for Foreigners & Multicultural Families

The government and private organizations provide services, such as Korean language and culture education and counseling, to assist foreigners and multicultural families in various aspects of their lives. It is helpful to learn about several organizations offering various support services.



#### 1 Korean Language Education

For foreign residents, learning Korean is essential to successfully settle down in Korea and gain a better understanding of Korean culture. Fortunately, many organizations in Korea provide opportunities for foreign residents to learn Korean free of charge. Multicultural Family Support Centers, Korea migrants' Center, and Korean Language School are a few of the leading organizations that provide Korean language education for foreign residents.



#### 2 Education on Korean Culture & Life in Korea

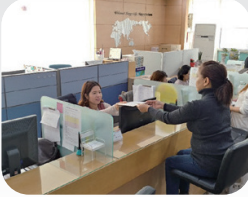
Programs for education on Korean culture and life in Korea are provided to help foreign residents overcome difficulties in Korean life caused by gaps in cultures and lifestyles. There are lectures and experience programs dedicated to education on multicultural understanding, law, human rights, marriage, family, and adaptation to Korean society.



#### 3 Information and Communication Technology (ICT) Education

Most Korean households use PCs, and Korea has a highly advanced Internet network. Users can obtain rich information using the Internet and enjoy the convenience of various online services, such as Internet banking and administrative services. Accordingly, many organizations, including the Multicultural Family Support Centers and the Korea Migrants' Center, operate ICT education programs to allow foreign residents to learn how to search for information through the Internet and use diverse applications.





#### 4 Counseling

Counseling services aim to help foreign residents having difficulties in Korea by providing them with the advice they need to solve their problems. (Family affairs, labor, residence, and law)



## 2 Programs and Institutions for Foreigners and Multicultural Families in Incheon

### 1 Incheon Support Center for Foreign Residents

The center provides Korean language classes and counseling services to help foreign residents to adapt to Korea.

- **Website:** [www.incheon.go.kr/welfare/WE020510](http://www.incheon.go.kr/welfare/WE020510) (available in English, Chinese, Japanese, and Vietnamese)
- **Address:** 8F, Incheon Saemaeul Center, 40, Yesul-ro 192beongil, Namdong-gu, Incheon (Guwol-dong)
- **Phone number:** 1833-6333

#### | Consultation Desk |

- **Counseling & Consultation:** Information on life in Incheon, such as housing and education, professional consulting on legal and labor issues, etc.
- **How to use:** in person or over the phone
- **Consultation hours:** Mon to Fri / 9:00 AM- 6:00 PM

#### | Korean Language Classes |

- **Courses:** Introductory, Beginner 1,2,3, Intermediate 1,2, Conversational, and TOPIK
- **How to apply:** First-come, first-served basis (check out the announcement on the website for each term)

## 2 IFEZ Global Center

The IFEZ Global Center provides one-stop services to foreign residents of the IFEZ.

- **Website:** <https://www.ifez.go.kr/global/index> (available in English, Japanese, and Chinese)
- **Inquiries:** 032-453-7350
- **Address:** 1F, G-Tower, 175 Art center-daero, Yeonsu-gu, Incheon (Songdo-dong)

### ⚙️ Main Programs

- **Education:** Korean language, Talk House, etc.
- **Counseling:** Settling in the IFEZ and recruitment of experts/professionals
- **Other:** IFEZ Global Center Orientation, traditional cultural experience, etc.

## 3 Incheon Support Center for Foreign Workers

The center provides labor-related counseling and support for living in Korea for foreign workers.

- **Website:** [www.infco.or.kr](http://www.infco.or.kr) (available in English)
- **Inquiries:** 032-431-5757 Weekdays 09:00-18:00 / Lunch 12:00-13:00
- **Address:** 12F, Myeongjin Plaza, 220, Hogupo-ro, Namdong-gu, Incheon (Nonhyeon-dong)

### ⚙️ Main Programs

#### • Counseling & Consultation

- ▶ Labor law (unpaid wages, change of workplace, industrial accidents, four major insurances, foreigner-exclusive insurance, etc.)
- ▶ Laws related to day-to-day life (civil/criminal cases, sojourn, traffic accident, injury, disease, other day-to-day issues)
- ▶ Interpretation service (available in 10 languages)

#### • Education

- ▶ Korean language, computer literacy, law, occupational safety, and crime prevention
- ▶ Traffic safety and driver's license (written test)

#### • Other

- ▶ Community meetings, sports competitions, year-end events, and cultural tours
- ▶ National cultural events (foreign countries), free health examination, and hair and beauty services



#### Michuhol-gu Support Center for Foreign Workers

The center provides in-person and phone counseling and consultation services to foreign workers about unpaid wages, labor law, and other day-to-day issues.

• **Address:** 229, Seokjeong-ro, Michuhol-gu, Incheon

• **Inquiries:** 032-880-7467, 874-4392



#### Danuri Helpline

The Danuri Helpline provides information on life in Korea, counseling and emergency support, interpretation services for day-to-day issues, and 3-way calls for interpretation to migrant women and multicultural families. Service users can consult with a counselor specializing in migrant women from their home country. Emergency counseling and victim protection services for domestic violence or sexual violence victims are available 24/7, all year round. Also, multicultural families can obtain various support services such as consultation on difficulties living in Korea, nationality and sojourn issues, and translation and interpretation services for court statements. The center then makes arrangements for related agencies such as the Multicultural Family Support Center, domestic violence counseling center, sexual violence counseling center, and shelter for victims of domestic violence, as well as the police, hospitals, and women's organizations to help resolve the issue. All matters discussed are kept strictly confidential.

#### Services

- **Regular:** Available in 13 languages and one-call, one-stop service for connection to other agencies
- **Activities related to emergency assistance services and counseling on emergency and violence**
  - ▶ Telephone counseling provided in native languages 24 hours a day, 365 days a year for immigrant women who are experiencing domestic violence
  - ▶ Operation of emergency refuge facilities (children included)
  - ▶ Connection with protection facilities for women suffering from domestic violence, sexual violence, or prostitution
  - ▶ Work related to the medical, legal, prosecutor, and police services
  - ▶ On-site counseling services
- **Information on Day-to-Day Life**
  - ▶ Comprehensive information on living in Korea, information according to the user's stage in life, and information related to multiculturalism
- **Interpretation and Three-Way Call Services and Comprehensive Living Information**
  - ▶ Three-way calls to provide interpretation services to migrants and multicultural families with difficulties communicating in Korean (for an emergency or with the police, hospital staff, community center, educational institution, bank, etc.), Assistance to facilitate communication within the family

## ⚙️ How to Use

### • Telephone consultation/service (three-way calls available) ☎ 1577-1366

- ▶ **Hours of operation:** 24 hours a day, 365 days a year
- ▶ **Language Services:** Korean, English, Chinese, Vietnamese, Tagalog (Filipino), Khmer (Cambodian), Mongolian, Russian, Japanese, Thai, Lao, Uzbek, and Nepali languages

### • Online Consultation

- ▶ **Website:** [www.liveinkorea.kr](http://www.liveinkorea.kr)
- ▶ **How to use:** Menu → Consultation Center → 1:1 Consultation (Message Board)
- ▶ **Language Services:** Korean, English, Chinese, Vietnamese, Tagalog (Filipino), Khmer (Cambodian), Mongolian, Russian, Japanese, Thai, Lao, Uzbek, and Nepali languages

### • Visit Counseling & Interview Counseling

- ▶ Visit counseling: Counselors from Danuri Helpline visit those who need counseling services
- ▶ Interview counseling: Counseling provided at Danuri Helpline
- ▶ How to use: Must schedule an appointment with a consultant in advance.

### • Emergency Shelter

- ▶ Hours of operation: 24 hours a day, 365 days a year
- ▶ How to use: Visit the center to get counseling services in Seoul, Suwon (Gyeonggi), Daejeon, Gwangju, Busan, Gumi(Gyeongbuk), and Jeonju (Jeonbuk)

| Region                 | Representative Helpline | Regional Contact |
|------------------------|-------------------------|------------------|
| Seoul (Central)        | 1577-1366               | 1577-1366        |
| Suwon, Gyeonggi-do     |                         | 031-257-1841     |
| Daejeon                |                         | 042-488-2979     |
| Gwangju                |                         | 062-366-1366     |
| Gumi, Gyeongsangbuk-do |                         | 051-508-1366     |
| Gumi, Gyeongsangbuk-do |                         | 054-457-1366     |
| Jeonju, Jeollabuk-do   |                         | 063-237-1366     |

※ The phone numbers for the six regional offices (incl. counseling service & shelter) work from 9:00 a.m. to 6:00 p.m. from Monday to Friday. If you call outside of office hours, it will be connected to the Seoul office, where the staff will help connect the caller to the nearest shelter for migrant women.

### • Women Migrants Human Rights Center of Korea 02-3672-7559

- ▶ Providing counseling services, education, and shelter for migrant women
- ▶ Website: <http://www.wmigrant.org/wp/>

## 6 Family Center (Multicultural Family Support Center)

Family Center provides various assistance to help married immigrants and multicultural families adjust to Korea. For example, early social adjustment programs for married immigrants provide a stable living for multicultural families, family education, counseling, translation & interpretation, cultural awareness, etc.

• **Danuri Helpline Website:** <http://liveinkorea.kr>

## 9 Multicultural Family Support Centers in Incheon

| Center  | Address   | Phone        |
|---|---|--------------|
| Jung-gu Family Center                           | 3F, Social Welfare Center, 23 Dapdong-ro, Jung-gu (Gyeong-dong) | 032-763-9337 |
| Dong-gu Family Center                           | 8, Bangmun-ro, Dong-gu (Songhyeon-dong)                         | 032-773-0297 |
| Michuhol-gu Family Center                       | 129, Nakseomjung-ro, Michuhol-gu (Yonghyeon-dong)               | 032-875-2993 |
| Yeonsu-gu Family Center                         | 109, Cheongneung-daero, Yeonsu-gu (Yeonsu-dong)                 | 032-851-2730 |
| Namdong-gu Family Center                        | 203-31, Hogupo-ro, Namdong-gu (Nonhyeon-dong)                   | 032-467-3904 |
| Bupyeong-gu Multicultural Family Support Center | 103 Yeorumul-ro, Bupyeong-gu (Sipjeong-dong)                    | 032-511-1800 |
| Gyeyang-gu Family Center                        | 5, Gyeyangsan-ro 102beon-gil, Gyeyang-gu (Gyesan-dong)          | 032-541-2860 |
| Seo-gu Family Center                            | 6, Gyeongmyeong-daero 693beon-gil, Seo-gu (Gongchon-dong)       | 032-569-1560 |
| Ganghwa-gun Family Center                       | 11-1, Bumgmun-gil, Ganghwa-eup, Ganghwa-gun (Gwancheong-ri)     | 032-932-1005 |

## Main Programs

- **Counseling Programs:** Provides counseling for multicultural families (including immigrant children) and information on living in Korea
- **Interpretation service:** Communication within the family, consecutive interpretation for emergencies and settlement in Korea, and interpretation and translation requested by individuals or organizations that directly or indirectly support multicultural families
- **Education:** Home visiting education (Korean language, education for parents and education for children), Language development support, Korean language education (capacity development for married immigrants), and vocational education (informatization, workplace etiquette, image making, etc.)
- **Others:** Multicultural awareness, self-improvement groups, volunteer groups, etc.

## 7 Saeil (New Job) Center for Women

The center assists married immigrant women in looking for jobs and provides employment support, internship, and vocational training.

• **Website:** saeil.mogef.go.kr

| Center  | Address  | Phone        |
|---|--|--------------|
| Incheon Seo-gu Saeil Center                     | 2F, Juam Plaza, 350, Gajeong-ro, Seo-gu                          | 032-577-6091 |
| Incheon Saeil Center                            | 24, Gyeongwon-daero 864beon-gil, Michuhol-gu                     | 032-440-6526 |
| Incheon Namdong Saeil Center                    | 4F, 750, Namdong-daero, Namdong-gu                               | 032-469-1251 |
| Incheon Michuhol-gu Saeil Center                | HangMaster Tower, 57, Aam-daero, Michuhol-gu                     | 032-881-6061 |
| Incheon Metropolitan City Saeil Center          | 539, Gilju-ro, Bupyeong-gu (Galsan-dong)                         | 032-517-9833 |
| Incheon Namdong Industrial Complex Saeil Center | 5F 353, Namdong-daero, Namdong-gu                                | 032-819-8800 |
| Bupyeong Saeil Center                           | 539, Gilju-ro, Bupyeong-gu (Galsan-dong)<br>Gyeyang Saeil Center | 032-511-3161 |
| Gyeyang Saeil Center                            | 10, Bongo-daero 628beon-gil, Gyeyang-gu<br>(Hyoseong-dong)       | 032-554-9368 |

## 3 Websites with Multilingual Support

It is easy to access information on life in Korea or take a Korean language class and Korean culture education through websites. In particular, the websites operated by institutions that support multicultural families and foreigners are helpful as they offer their services in multiple languages.

### 6 Websites Operated by the Central Government

| Organization   | Website   | Operating Agency                    | Services  |
|--|---|-------------------------------------|---|
| Multicultural Family Support Portal Site<br><Danuri> | <a href="http://www.liveinkorea.kr">http://www.liveinkorea.kr</a> | Korean Institute for Healthy Family | Information on living in Korea, counseling office, multilingual news, counseling and interpretation services for migrant women in emergency situations such as domestic violence, sexual violence, or sex trafficking |

| Organization                             | Website   | Operating Agency                             | Services   |
|--|---|--|--|
| Multicultural Kkureomi                   | <a href="http://www.kidsnfm.go.kr">http://www.kidsnfm.go.kr</a>         | National Folk Museum of Korea (for Children) | Introduce cultures from around the world   |
| korea.net                                | <a href="http://www.korea.net">http://www.korea.net</a>                 | Korean Culture and Information Service       | Introduce Korean culture and information on current affairs  |
| VisitKorea                               | <a href="http://www.visitkorea.or.kr">http://www.visitkorea.or.kr</a>   | Korea Tourism Organization                   | Information on traveling and festivals in Korea  |
| EBS Korean language classes <Durian>     | <a href="https://www.ebs.co.kr/durian">https://www.ebs.co.kr/durian</a> | EBS  | Korean language and culture classes  |
| Korea Support Center for Foreign Workers | <a href="http://www.migrantok.org">http://www.migrantok.org</a>         |  | Education & training for foreign workers, consultation on welfare and healthcare services, and information on volunteer work |

### ⚙ Websites Operated by Local Governments

| Name                                  | Website   | Operating Agency                 | Services  |
|---------------------------------------|---|----------------------------------|---|
| Seoul Hanultari                       | <a href="http://www.mcfamily.or.kr">http://www.mcfamily.or.kr</a> | Seoul Metropolitan Government    | Support programs, communities, Korean language education, employment support, vocational training, and information  |
| Seoul Global Center                   | <a href="http://global.seoul.go.kr">http://global.seoul.go.kr</a> | Seoul Metropolitan Government    | Civil service center for foreigners living in Seoul, support services for day-to-day life, consultation on licenses and taxation, etc.  |
| Ansan Foreign Resident Service Center | <a href="http://global.iansan.net">http://global.iansan.net</a>   | Ansan City, Gyeonggi-do Province | Information on support programs operated by the Ansan Foreign Resident Center and Multicultural Family Support Center, webzine in 8 languages, and a guidebook on living and legal issues |
| Chungnam Dawoolim                     | <a href="http://dawoolim.net">http://dawoolim.net</a>             | Chungcheongnamdo Province        | Information on staying in Korea and living in Chungcheongnamdo Province (e.g. center news, a guide to life in Korea, other cultures, everyday expressions)                                |

### ⚙ Websites Operated by Private Organizations

| Organization                             | Website   | Operating Agency                         | Services   |
|--|---|--|--|
| KBS World Radio                          | <a href="http://world.kbs.co.kr">http://world.kbs.co.kr</a> | KBS World                                | Information on news, current affairs, entertainment programs, etc. in multiple languages |
| MNTV (Migrant worker Network Television) | <a href="http://www.mntv.net">http://www.mntv.net</a>       | Korea Support Center for Foreign Workers | News in multiple languages and everyday Korean expressions                               |
| Multicultural Family e-Learning Campaign | <a href="http://ecamp.cuk.edu">http://ecamp.cuk.edu</a>     | Cyber University of Korea                | Korean language education  |



## 4 Mobile Apps with Multilingual Support

### 2 Apps Operated by the Central Government

| Mobile app | Operating agency                                     | Services   | Related website                                       | Services     |
|------------|--|--|---|--------------|
| Danuri     | Korean Institute for Healthy Family                  | Information magazine for multicultural families (Rainbow+), guidebook for life in Korea, information on multicultural family support centers nationwide, and emergency contact information | Portal for supporting multicultural families <Danuri> | Android, IOS |
| Gongzone   | Korea Immigration Service of the Ministry of Justice | Gongzone, a magazine published by the Korea Immigration Service of the Ministry of Justice   | Korea Immigration Service of the Ministry of Justice  | Android, IOS |

### App Operated by Local Government

| Mobile app | Operating agency              | Services  | Related website | Available on |
|------------|-------------------------------|---|-----------------|--------------|
| MY SEOUL   | Seoul Metropolitan Government | Administrative information, employment information, Korean language education information, multilingual chat, international calls, day-to-day life calls, wages calculations, and Dasan Call Center information | Seoul Hanultari | Android, IOS |

### 2 Apps Operated by Private Entities

| Mobile app      | Operating agency | Services  | Related website | Available on |
|-----------------|------------------|---|-----------------|--------------|
| KBS world radio | KBS              | News, current affairs, entertainment and other programs related to Korea, with texts and videos in 11 languages       | KBS WORLD RADIO | Android, IOS |
| Segye Sinmun    | -                | Newspapers from the United States, Japan, China, Mongolia, Russia, the Philippines, Cambodia, Vietnam, Thailand, etc. | -               | Android, IOS |



## 5 Enrollment and Transfer Guide for Students with Foreign Nationality

### 1 Enrollment or Transfer Consultation



- ① **Elementary school:** School in your area of residence - vice-principal or head of education
- ② **Middle school:** Municipal or provincial office of education that governs the place of residence
- ③ **High school:** vice-principal or head of education of a high school that the student wishes to enroll in

## 2 Documents Required for Enrollment or Transfer

- ① One copy of the enrollment or transfer application form (form provided by city and province)
- ② A copy of a certificate of entry & exit or certificate of foreigner national registration (certificate of domestic residence report)
  - ※ If it is difficult to submit the above forms, you may provide other documents that serve as proof of residence, such as a written guarantee issued by the neighborhood or a lease agreement.
- ③ Documents verifying academic credentials (graduation certificate, enrollment certificate, or transcript, etc.)
  - ※ Documents verifying academic credentials contain information regarding the types of schools which students attended and schooling periods. A certificate of graduation or enrollment must bear the dates of entry and leave, the school year, and the signature or seal of the school principal.
- ④ School record at a previous school (if applicable)
- ⑤ Article 27 of the Act on the Prevention and Management of Infectious Diseases (Vaccination Certificate)
  - ※ Refer to the "Overseas Transfer Student Vaccination Management" in the Student Infectious Disease Prevention and Crisis Response Manual
- ⑥ Also, for educational purposes, a copy of the passport, family certificate, or resident registration (if the student has acquired Korean citizenship) may be required depending on the school.

## 3 Submission of relevant documents to the school to enroll or transfer

### 4 Determination of School Grade

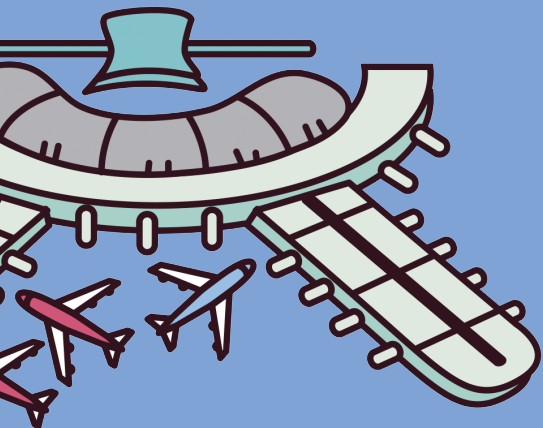
- ① In case of having the documents of previous academic history: Determine school grades depending on the documents of previous academic history, adjusting the attended school years and curriculum in the foreign country to the Korean school system (12 years)
- ② In case of having no documents of previous academic history: Academic background recognition and grade determination through the academic review committee of the Regional Office of Education or school with an academic history recognition review committee (Articles 98-2 and 98-3 of the Enforcement Decree of the Elementary and Secondary Education Act)

### 5 Academic record processing (school)

- ※ Refer to Incheon Metropolitan Office of Education's Multicultural Education Support Center website (<https://kr.allim2.kr/>) – Notice – No. 47 「2021 Multicultural Students Academic Eligibility Review Committee Operating Materials」 and No. 48 「2021 Academic Management Manual for Foreign Students」.

• **Immigration/transfer/admission counseling:** Multicultural Education Support Center ☎ 420-8269

• **Education Review Committee in charge:** Multicultural Education Support Center ☎ 420-8267

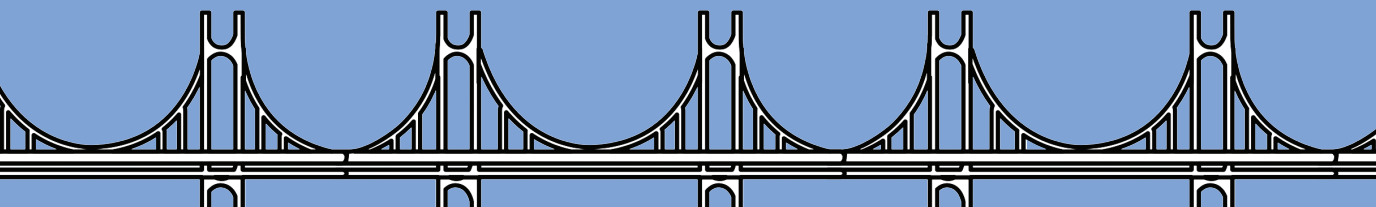


# III

## Foreigner Registration and Sojourn



Guidebook for Living in Incheon For Foreign Residents ● Be the Incheoner



- 1. Visa
- 2. Foreigner Registration and Stay
- 3. Domestic Residence Registration
- 4. Incheon Immigration Office Information
- 5. Tax Payment
- 6. Leaving the Country



### III

#### Foreigner Registration and Sojourn



## 1 VISA

### 1 What is a visa?

All visitors to the Republic of Korea must possess a valid visa according to their purpose of entry, and it must be attached to their passports. A visa is a consular 'recommendation of entry' in return for an entry permit application. Therefore, holding a visa does not guarantee entry to Korea, especially if someone is not qualified with the entrance standard in the immigration interview.

※ The Visa Portal website (<https://www.visa.go.kr>) offers accurate information and easy visa application and issuance services (available in English and Chinese)

### ⚙️ Korean Visas

- ① **Visa number:** Serial number of the issued visa
- ② **Status of stay:** Type of social activities that the visa holder can engage in or their status while staying in Korea
- ③ **Period of stay:** The number of days the visa holder can stay in Korea from the date of entry
- ④ **Type:** Type of visa (S: single entry visa, D: double entry visa, M: multiple entry visa)
- ⑤ **Issuance date:** The date on which the visa was issued
- ⑥ **Expiry date of entry:** Validity period of the visa (the date on which the visa holder must enter Korea, as visas past their expiry dates are invalid)
- ⑦ **Place of issuance:** Information on the diplomatic office that issued the visa

### 2 Type of Visa According to the Status of Stay

Types of visas by status of residence are classified into a total of 15 categories. For more information, please visit the 'Korea Visa Portal Website (<http://www.visa.go.kr>) → Types of Visas by Purpose of Entry'.

### Types of Visas According to the Status of Stay

- Short-Term Visit • Medical Treatment • Study • Language Training • Professional (Employment)
- Intra-Company • Transfer • Journalism • Religious Affairs • Investment • International Trade
- Overseas Korea • Work and Visit • Family Visitor • Dependent Family • Married Migrant
- Trainee • Non-Professional (Employment) • Diplomacy • Official Business

※ Click “Diplomacy · Official Business” → Learn about the eligibility criteria and scope of activities permitted for Diplomacy (A-1) and Foreign Government Official (A-2) visas

### 3 Visa Issuance Procedure

- **Visa application and issuance location:** Embassy or consulate of the Republic of Korea

#### ⚙️ Visa Application Process through Embassy Abroad



## 2 Foreigner Registration and Stay

For more information, go to → ‘Information Application Procedure’, and for some visas (E1~E7, etc.), it is possible to apply and issue an electronic visa.

### 1 Foreigner Registration and Stay

- **Hi Korea website:** [www.hikorea.go.kr](http://www.hikorea.go.kr) (available in English, Japanese, Chinese) 1345
- **Korea Immigration Service Headquarters website:** [www.immigration.go.kr](http://www.immigration.go.kr) (available in English)

#### ⚙️ Foreign Resident Registration

- Foreigners who intend to stay in Korea for more than 90 days from the date of entry
- Foreigners born in Korea or who lost their Korean nationality and acquired a foreign one can receive a residence permit. They must apply for foreign resident registration if they want to stay more than 90 days from the permission date.

- Exceptions of foreigner registration (foreigner registration exemption)
  - ▶ Diplomacy, public affairs, agreement conductors and their families (A-1, A-2, A-3)
  - ▶ Workers engaged in the significant business of diplomacy, industry, or national defense and their families and foreigners recognized by the Minister of Justice as particularly necessary to be exempted from foreigner registration- Canadians who stay less than 6 months and plan to execute the activities permitted in the following visa status (D-1, D-6, F-1, G-1, F-3)
  - ▶ Culture and Arts (D-1), Religious Affairs (D-6), Family Visitation (F-1), Family Dependency (F-3), Other (G-1)

### Registration Period

- Foreigners wishing to stay in Korea for more than 90 days → Within 90 days from the date of entry Foreigner who received permission to stay or to change their status of residence → at the time of approval granted
  - ※ If a Canadian citizen with a B-2 visa (transit visa for tourists) has changed his/her status of stay within six months from the entry date, he/she will be registered as a foreigner when permission is granted.

### Where to File a Foreigner Registration Application

- The Korea Immigration Service Office issues a residence card with jurisdiction over the applicant's residence.
  - ▶ **Issuing agency:** Incheon Immigration Office
  - ▶ **Jurisdiction:** Incheon Metropolitan City (excl. Incheon International Airport) and Bucheon and Gimpo in Gyeonggi-do Province
  - ▶ **Address:** 393, Seohae-daero, Jung-gu, Incheon (Hang-dong)
  - ▶ **Tel :** 032-890-6407 / Fax : 032-890-6400
    - ※ **Gimpo Multicultural Immigrant Plus Center:** Some foreign affairs under the jurisdiction of Gimpo City are administered.

### Required Documents (Applicable to All)

- Passport, integrated application form, and standard-sized photo (3.5×4.5cm)
- **Fees:** Issuance of a registration card (KRW 30,000), but the fees for an extension of stay, change of status of stay, etc. vary, so call ☎ 1345 for more information.
- Additional Documents Required According to the Status of Stay
  - ※ **Application submitted by a representative (qualified person):** Power of attorney, a copy of the applicant's ID card, a copy of the representative's ID card, an employment certificate of the representative, etc.
  - ※ **Details on the additional documents required according to the status of stay:** 「e-Government website for foreigners (www.hikorea.go.kr) (available in English, Chinese, and Japanese) → Information Sharing Corner → Immigration/Stay Guide」

## 2 Reissuance of Foreign Residence Card (Formerly known as Alien Registration Card-ARC)

### ⚙️ Necessary in the Following Cases

- Lost or stolen residence card
- Damaged residence card
- Lack of space for necessary information
- Permission to change the status of stay Changed details of foreign residence card (name, gender, date of birth, or nationality)

### ⚙️ Required Documents for Reissuance

- Reissuance application form and one standard-sized photo (3.5×4.5cm)
- Original residence card (must be submitted unless re-issuance is requested due to loss)
- **Fee:** KRW 30,000
- **Place of re-issuance:** Immigration Office of the applicant's address

### ⚙️ Report of Changes in Foreign Resident Registration Status

If a foreigner has completed a foreigner registration and falls under any of the following circumstances, he/she or his/her representative must report the changes to the Immigration Office within the jurisdiction of residence within 15 days of the incident. (In case of violation, a fine will be imposed by Article 35 of the Immigration Act)

- Change in name, gender, date of birth, or nationality
- Change in passport number, date of issuance, and expiry date
- Changes in foreign resident's organization or name of the organization
- ※ **Required documents:** Integrated application form (report of changes in foreign resident information), passport, foreign residence card, and reference documents proving the change

### ⚙️ Regulations for Foreign Residents and Domestic Employment

- Foreign residents can stay within a reasonable period of residence and should abide by the obligations based on residence status.
- Political activities cannot be operated except as provided by the law.
- If you intend to work, you must be a qualified resident and work only at the designated workplace.
- If you want to change your designated workplace, you should report or obtain permission from the immigration office.
- ※ **For details, please refer to the following website:** 「e-Government website for foreigners (www.hikorea.go.kr) (available in English, Chinese, and Japanese) → Information Sharing Corner → Immigration/Stay Guide」  
Foreigners with the following visas shall be required to obtain a work permit and a status of stay to work in the Republic of Korea legally. Call ☎1345 or visit the Hi Korea website (www.hikorea.go.kr) for further information.

## 1 Part-time jobs of foreigners with a Study(D-2) or Language Trainee (D-4-1, D-4-7) visa

• **Principle:** Limited to part-time work (simple labor jobs, etc.) generally done by students

|                                      |  |
|--------------------------------------|--|
| <b>Eligibility</b>                   | <ul style="list-style-type: none"> <li>• Foreigners with a Study or Language Trainee visa confirmed by a college official in charge of international students or an academic advisor. (Students studying a language: Not applicable for minors, at least six months shall elapse after the date of change in qualifications/the date of entry.)</li> </ul>   |
| <b>Permitted work hours</b>          | <ul style="list-style-type: none"> <li>• Language training course: Within 10-20 hours a week</li> <li>• Undergraduate course: Within 10-20 hours a week</li> <li>• Postgraduate course: Within 15-30 hours a week</li> <li>※ For further information, refer to &lt;Permitted work hours by the level of Korean proficiency and degree courses&gt;, guidelines for Foreign Residents issued by the Ministry of Justice.</li> </ul>  |
| <b>Allowed and prohibited fields</b> | <ul style="list-style-type: none"> <li>• Allowed fields                             <ul style="list-style-type: none"> <li>▶ Interpreters, translators, assistants in the restaurant business, general office assistants, etc.</li> <li>▶ Store clerks, restaurant employees, event staff at English villages and camps, etc.</li> <li>▶ Tour guide assistants, duty-free shop assistants, etc.</li> </ul> </li> <li>• Prohibited fields                             <ul style="list-style-type: none"> <li>▶ All manufacturing and construction businesses</li> <li>▶ High-tech research centers, businesses related to deceptive acts, entertainment establishments, etc.</li> </ul> </li> </ul> |
| <b>Change in Workplace</b>           | <p>If the employer and workplace change within the permitted period<br/>(The student, or a college official in charge of international students, shall report a change in the workplace, etc., within 15 days by visiting the Immigration Office holding jurisdiction or filing a report online)</p>   |
| <b>Those who cannot work</b>         | <ul style="list-style-type: none"> <li>• Those whose most recent attendance rate was 70% or below</li> <li>• Those whose GPA (credits obtained) was a C (2.0) or below</li> <li>• For those taking a language training course, anyone with an average attendance rate for all semesters of 90% or below</li> <li>• Those who do not meet the requirements for a part-time work permit and failed to report a change in the workplace after changing jobs</li> </ul>  |
| <b>Documents required</b>            | <ul style="list-style-type: none"> <li>• Passport, residence card, application form, and fees (exempted)</li> <li>• A reference for a part-time job and a transcript or attendance certificate (issued by the school)</li> </ul>   |

※ Foreigners with a Study or Language Trainee visa can work for a maximum of one year and at up to two places within the permitted period of stay.

※ Within the scope that does not infringe upon the essential qualifications of international students, temporary rewards, cash prizes, and other acts accompanied by remuneration in students' daily lives do not require a work permit.

## 2 Family Visitors or Dependent Family (F-1) and Accompanying Spouse/Child(F-3)

Those who meet specific requirements, such as qualifications for a work permit, among foreigners with a Family Visitor or Dependent Family (F-1) or Accompanying Spouse/Child (F-3) visa may have a job after obtaining a work permit corresponding to the Professor (E-1) or Foreign National of Special Ability (E-7) visa.

### ⚙️ Report of Changes in Place of Residence

• If foreign residents change their residence, they must report the change of address (moving-in notification) within 15 days of the moving date to the Korea Immigration Office or the head of si/gun/gu.



- It is also possible to report the change of place of residence via the Hi Korea website ([www.hikorea.go.kr](http://www.hikorea.go.kr)).
- Married immigrants must report the change of place of residence even if their Korean spouse has filed a move-in notification with the dong community center.
- In case of violating this requirement, a penalty may be imposed under Article 36 of the Immigration Act. (Max. 1 million won)

### ⚙️ Required Documents (Applicable to All)

- Integrated application form, passport, residence card, proof of new address (lease agreement, confirmation of accommodation provision, etc.)



## 3 Domestic Residence Registration

### 1 Domestic Residence Registration for Foreign-Nationality Koreans

#### ⚙️ Definition of “Foreign-Nationality Koreans”

A foreign-nationality Korean is a person who has held Korean nationality by birth (incl. Koreans who migrated outside Korea before the establishment of the Government of the Republic of Korea) or as a lineal descendant who has acquired the nationality of a foreign country.

#### ⚙️ What is Domestic Residence Registration for Foreign-Nationality Koreans?

The place of residence is where the person will reside for at least 30 days. Those intending to register their place of residence in Korea to stay for more than 90 days must submit a registration form to the Immigration Office. A foreign-nationality Korean who has not reported the place of residence in Korea shall file for foreigner registration within 90 days from the entry date.

#### ⚙️ How to Report and Required Documents

Prepare and submit the required documents to the Immigration Office with jurisdiction over their residence.

- ※ The required documents (Basic documents: domestic residence registration form, one photo (3x4cm), and a copy of passport) vary depending on the applicant's situation, so it is recommended to visit the Immigration Office and ask your inquiries.

#### ⚙️ Domestic Residence Registration for Foreign-Nationality Koreans

- Must report the change of address (domestic residence) to the Korea Immigration Office, the head of si/

gun/gu office, or eup/myeon/dong office of their jurisdiction within 14 days of the moving date.

- It is also possible to change the residence address via the Hi Korea website ([www.hikorea.go.kr](http://www.hikorea.go.kr)).
  - ※ In case of violating this requirement, a penalty may be imposed under Article 6 of the Immigration Act. (Max. KRW 2 million)

### **How to Report and Required Documents**

- Passport and Domestic Residence Registration Card for foreign-nationality Koreans
- Application form to report a change in the place of residence in Korea
- Additional documents providing the change of address (mail, lease agreement, confirmation of accommodation provision, etc.)

### **Return of Domestic Residence Registration Card for Foreign-Nationality Koreans**

In any of the following cases, a foreign-nationality Korean shall return his/her Domestic Residence Registration Card to the Immigration Office or its branch office.

- When a foreign-nationality Korean acquires the nationality of the Republic of Korea, the card must be returned within 30 days of completing the resident registration process.
- When a foreign-nationality Korean becomes disqualified for stay as an overseas Korean, the card must be returned within 30 days of becoming aware of the disqualification.
- The card must be returned within 30 days from the date of knowing the death in Korea of a foreign-nationality Korean
- When a foreign-nationality Korean departs and has no intention to re-enter within the period of stay under the status of stay as an overseas Korean, the card must be returned at the time of departure.
  - ※ In case of a violation, a fine for negligence may be imposed under Article 8 of the Act on the Immigration and Legal Status of Overseas Koreans. (Max. 1 million won)

## **Permanent Resident**

For detailed information on obtaining permanent residency, go to the e-Government website for foreigners ([www.hikorea.go.kr](http://www.hikorea.go.kr)) → News & Announcements → Notice. Consult one of the representatives regarding your situation before applying for permanent residency.

## **Naturalization**

Foreigners who have never had Korean citizenship may become naturalized Korean citizens with authorization from the Minister of Justice. For detailed information on the required documents and other matters necessary for the application, go to the e-Government website for foreigners ([www.hikorea.go.kr](http://www.hikorea.go.kr)) → Information Sharing Corner → Nationality/Naturalization Guide.



## 4 Incheon Immigration Office Information

### 1 About the Incheon Immigration Office

- **Location:** 393, Seohae-daero, Jung-gu, Incheon (Hang-dong)

※ For more detailed information, please get in touch with the Immigration Contact Center: ☎ 1345.

### 2 Main Programs

#### 1 Korea Immigration and Integration Program (KIIP)

A program designed to help immigrants to Korea gain the essential knowledge and skills (an understanding of the Korean language, culture, and society) they need to adapt to and become self-sufficient members of Korean society.

#### ⚙️ Benefits of Completing the Program

- Acknowledgment of passing the comprehensive evaluation for naturalization applicants when applying for naturalization, exemption from the naturalization interview.
- Permanent resident applicants will be deemed to have fulfilled the basic requirements necessary.
- Those applying for a status change of stay (visa type) will be given bonus points and be exempt from proving their Korean proficiency.

#### ⚙️ Application Method and Eligibility Criteria

- Apply online via the Immigration & Social Integration Network website ([www.socinet.go.kr](http://www.socinet.go.kr))
- Assignment of Level of Education:
  - ▶ Pre-evaluation ([www.kiiptest.org](http://www.kiiptest.org), sign up with the same ID and password as for Immigration & Social Integration Network website)
  - ▶ Assignment of level other than pre-evaluation
    - ① Start from level 0 – Participants can be assigned to level 0 immediately without pre-evaluation
    - ② Link with TOPIK (refer to the table below): Participants with valid report cards can be assigned to the Korea Immigration and Integration Program without pre-evaluation, depending on each level.
    - ③ Link to marriage immigration visa (submit documents proving that you have completed education at an overseas Korean language educational institution designated by the Ministry of Justice, such as King Sejong Institute). Participants can be assigned to the 2nd level without pre-evaluation.
    - ④ Intermediate-level Korean Language Education Course: This system allows those who have received Korean language education at other institutions to participate in the social integration program by acknowledging Korean language education from various institutions such as universities, corporations, and organizations as a Korean language curriculum for the social integration program. (Institutions

such as universities submit application documents to the competent immigration office in official form)

- **Eligibility criteria:** Foreigners and naturalized citizens (less than three years since naturalization) who are legally staying with a foreign residence card or domestic residence registration card.

#### Test of Proficiency in Korean and Social Integration Program

| Test of Proficiency in Korean |   | Social Integration Program                       |
|-------------------------------|---|--|
| Level 1                       | → | Assign to Level 2                                |
| Level 2                       | → | Assign to Level 3                                |
| Level 3                       | → | Assign to Level 4                                |
| Level 4~6                     | → | Assign to Level 5 (Understanding Korean Society) |

※ (Ex) Those who have level 1 of the Test of Proficiency in Korean will be assigned to level 2 of the Social Integration Program

## 2 International Marriage Guidance Program

The program aims to support international marriages by helping international couples to form happy families and understand their spouses who have grown up in different cultures and environments. Participants can learn about international marriage-related systems, the culture of their spouse, visa issuance procedures, etc.

### ⚙️ Application and Eligibility Criteria

Criteria apply to a Korean citizen who intends to marry a national of one of the notified countries designated by the Minister of Justice, or who has already married a foreigner and intends to invite the foreign spouse. Koreans who intend to marry a person from one of the following countries shall complete the International Marriage Guidance Program.

- **How to apply:** Apply online after signing up on the Immigration & Social Integration Network
- **Applicable countries:** China, Vietnam, the Philippines, Cambodia, Mongolia, Uzbekistan, and Thailand
  - ※ For more information on how to apply, visit the Immigration & Social Integration Network website ([www.socinet.go.kr](http://www.socinet.go.kr)).

## 3 Early Social Adjustment Program

This program is designed to teach foreigners coming to Korea for the first time the basic rules and information on life in Korea that will help them adjust to Korea.

### ⚙️ Married Immigrants

- **Eligibility:** A foreigner who entered Korea as a “married migrant (F-6)” or their spouse and family
  - ▶ Educational opportunities are given to those who have completed the foreign resident registration procedure

- ※ A foreigner who entered Korea with an F-6 visa from China, Vietnam, the Philippines, Cambodia, Mongolia, Thailand, or Uzbekistan must complete the early adaptation program. Must participate before applying for foreign resident registration

### Koreans with Foreign Nationality

- **Eligibility:** Koreans with foreign citizenship wishing to register as a foreigner with a working visit (H-2) visa
- **When registering as a foreigner, the applicant must submit the Early Social Adjustment Program Certificate**

### International Students

- **Eligibility:** Newly enrolling international students (D-2, D-4-1, etc.)
  - ※ International students who have never participated in the program may participate if they wish to. Please note that programs are also offered to foreign entertainers (E-6-2), children entering the country in the middle of their school years, foreigners living in expat enclaves, etc.
- **How to apply:** Apply online after signing up on the Immigration & Social Integration Network ([www.socinet.go.kr](http://www.socinet.go.kr))



## 5 Tax payment

- If case of arrears, visa extension is normally possible if all amounts are paid according to the payment instructions of immigration officials.
  - ※ Restrictions on work such as permission for an extension of the period of stay, foreign residence card (report of residence), permission for activities other than the status of sojourn, approval or report to change/additional workplace, grant of status of stay, permission to change the status of stay, etc.



## 6 Leaving the Country

- A foreigner with a valid passport may free to leave the Republic of Korea. However, a suspected criminal may be detained or deported from the Republic of Korea. A foreigner who intends to leave the Republic of Korea beyond the permitted period of stay shall go through certain procedures at the immigration office.
- Foreigners who leave the Republic of Korea permanently shall return their foreign residence card during the Immigration Control. A foreigner whose departure is prohibited may be subject to a restricted stay status and scope of activities. A foreigner who stays in the Republic of Korea after the deadline for departure may be deported or subject to criminal penalties. A foreigner subject to a departure prohibition order may file a written objection with the Ministry of Justice within ten days after receiving the order.
  - ※ Call ☎1345 or visit Hi Korea website ([www.hikorea.go.kr](http://www.hikorea.go.kr)) for further details.

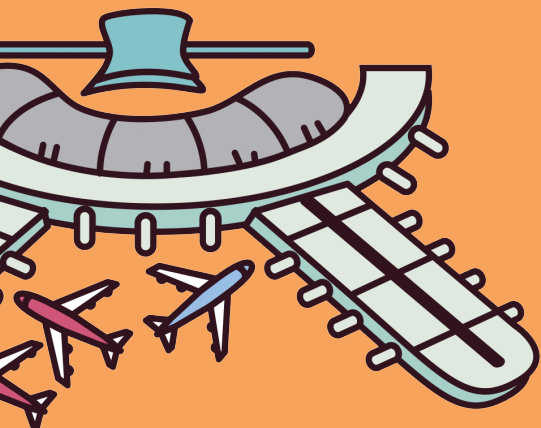


# IV

## Living in Incheon



Guidebook for Living in Incheon For Foreign Residents • Be the Incheoner



- 1 Driving & Transportation  
(Driver's License & Public Transportation)
- 2. Public Transportation
- 3. Telecommunication
- 4. Household Waste Disposal
- 5. Use of Public Administration & Services  
(Public Administrative Offices, Police Stations,  
Fire Stations, Post Offices, etc.)
- 6. Economic Life
- 7. Education
- 8. Health & Medical Care  
(Medical Institutions, etc.)
- 9. Work & Labor  
(Labor Standards Act, Social Insurance, etc.)



## IV

### Living in Incheon



## 1 Driving & Transportation (Driver's License & How to Use Various Transportation)



### 1 Driver's License



#### 1 Getting a Driver's License in Korea

Driver's licenses in Korea are classified as Level I and II. The license type determines the types of motor vehicles you can drive. To get a driver's license, an applicant shall pass a total of three tests: a written test, a driving course test, and a behind-the-wheel driving test. The tests are administered at driver's license examination offices, but they can also be taken at designated driving schools.



#### How to Get a Driver's License

You can obtain detailed information on each step by visiting 『the Road Traffic Authority's Safe Driving website (<https://www.safedriving.or.kr/>) → Driver's License Test Guide → How to Get a License.』. On the website, you can also sign up for the tests, look up your license information, request a driver's license issuance, etc.



#### Incheon Driver's License Examination Office

The Incheon Driver's License Examination Office operates a written test assistance system and driving course test center for foreigners.

- **Address:** 1247, Aam-daero, Namdong-gu, Incheon (Gojan-dong)
- **Inquiries:** 1577-1120





## Driver's License Classes for Multicultural Families

- Ganghwa Police Station : 032-930-0393
- Namdong Police Station : 032-718-9376
- Bupyeong Police Station : 032-363-1376
- Seobu Police Station : 032-453-3376
- Jungbu Police Station : 032-760-8376
- Gyeyang Police Station : 032-363-6238
- Nambu Police Station : 032-717-9376
- Samsan Police Station : 032-509-0376
- Yeonsu Police Station : 032-453-0376
- Nonhyeon Police Station : 032-454-9376

### ※ Wonderful Driving website ([www.wonderfuldriving.com](http://www.wonderfuldriving.com))

The Wonderful Driving website provides information on how multicultural families can acquire driver's licenses.

### | Information on where to take the tests and the procedures |

- Provide courses on the written test, driving course test, and a behind-the-wheel driving test as well as sample questions from the written test (available in 10 languages; must sign up to receive the services)
- Available in Korean, English, Japanese, Chinese, Vietnamese, Thai, Indonesian, Mongolian, Cambodian, and Russian

## 2 Exchanging a Foreign Driver's License for a Korean Driver's License

- Anyone with a foreign driver's license issued by a nation that has signed a mutual agreement with Korea (about 130 countries) can exchange it for a Korean driver's license. Once the license's authenticity is confirmed based on the required documents submitted (such as the embassy certificate of license), the applicant can obtain a Korean driver's license after passing the aptitude test (health check) and written test (exempt for those with licenses from countries where a Korean driver's license is recognized).
- The validity of a foreign driver's license is recognized only for a full license that has not expired. Exchanges are impossible for a learner's or temporary license, etc.
- **Where to apply:** Driver's License Examination Office nationwide

### Countries that Recognize Korean Driver's License

There are countries where a Korean driver's license can be exchanged for a local license without additional examinations. The list of the countries is updated by the National Police Agency every year.

- License issued by a country that recognizes Korean driver's licenses: applicant only needs to complete the aptitude test (health check)
- **License issued by a country that does not recognize Korean driver's license:** applicant must complete the aptitude test and simplified written test (20 multiple choice questions)
- Other matters: a foreign license may be exchanged only for a Level II driver's license
  - ※ You can look up the countries that recognize Korean driver's licenses by visiting the Road Traffic Authority's Safe Driving website (<https://www.safedriving.or.kr/>) → Exchanging Foreign License for Korean License

### **3** International Driving Permit

Those who have acquired an international driving permit from abroad can drive in Korea until the expiry date (1 year from the entry date). However, international driving permit holders may only drive the specific motor vehicle type indicated on the permit.

### **4** Vehicle Registration and Insurance Enrollment

#### Vehicle Registration

##### New Registration

- A person who has purchased a motor vehicle shall apply for new vehicle registration at the gu office with jurisdiction over your residence.
- A motor vehicle seller may apply for the new motor vehicle registration instead of the buyer, and the required documents are the same as the ones for Koreans. (ID card needed)
- A temporary license plate will be issued before the official registration. It can be used for no more than ten days.

#### Motor Vehicle Insurance (Liability Insurance)

- If a person intend to own a motor vehicle, he/she shall purchase a liability insurance policy to prepare for a potential accident.
- Since the amount insured varies depending on the insurance policy, choose one that suits your driving style.

##### Automobile Liability Insurance

- Any person who operates a motor vehicle is mandatory to subscribe to a liability insurance policy to

compensate the victim(s) in the event of an injury or death that is attributable to their vehicle operation (Article 5 of the Guarantee of Automobile Accident Compensation)

- Any person who operates a motor vehicle with no mandatory insurance shall be punished by imprisonment with labor for not more than one year or by a fine not exceeding 10 million won.

## 2 Public Transportation

### 1 Buses

Bus users pay a flat rate, and payment can be made with cash or a transportation card. For your convenience, it is recommended to pay with a transportation card instead of cash as you do not need to carry cash, receive change or purchase a ticket every time. In addition, transportation card holders can receive a discount, which can save money. There are two types of transportation cards: prepaid rechargeable and postpaid cards (credit cards).

- ※ When you are getting off a bus or subway or transferring to another mode of public transportation, you need to tap your transportation card on the sensor to get a transfer discount.
- ※ Eligibility for a free ride: Children under six years old accompanied by a guardian can take the bus for free.

### How to Purchase and Use Transportation Cards

#### ① Prepaid, Rechargeable Transportation Cards (T-money and Cash-bee)

Prepaid, rechargeable transportation cards can be purchased at convenience stores and designated subway stations. It can be used for all types of public transportation in Incheon, including the subway, buses, and taxis, and the amount on the card can be used like cash at some convenience stores. The card's price is around 2,500 won. There are cards for adults, teenagers, and children. You can top it up at a convenience store or subway station in increments of 1,000 won. Note that these cards are not accepted in other parts of the country.

#### ② Postpaid Transportation Card

A postpaid transportation card primarily refers to a transportation card issued by a card company. Generally, it is a debit or credit card with an RF feature that allows it to be used as a transportation card. Since this is a form of paying by credit, you can use transportation even if you don't have any money. It can also be used throughout the country. However, a postpaid transportation card can only be issued by those at least 19 years old, so it is better to use a prepaid transportation card as there are no discounts for youth and children.

### ※ Things to Remember for Transportation Cards

- Postpaid transportation cards can only be used by those who have been issued a credit card from a card company.
- Check whether your debit card or credit card has a transportation card function. (There must be a postpaid transportation card mark on the back.)
- The fare paid with the postpaid transportation card will be billed with the statement for the following month.
- If you tap your wallet that contains two or more transportation cards, it will result in an error, or you may get double charged.

### Tips for Bus Users



**Incheon Metropolitan City Bus Information Management System website:** [bus.incheon.go.kr](http://bus.incheon.go.kr)

- It provides information on bus routes, schedules (arrival intervals), etc.



**Smartphone app**

- Search for the Incheon bus, Seoul bus, or buses in Korea, and download the related app.

## 2 Subway

Additional fares are added to the basic fare depending on the distance traveled. You can pay the fare with a single journey ticket or transportation card (prepaid or postpaid). When you are using a bus or subway, a general transportation card can be used to pay for both rides. It is possible to transfer between the subway and bus systems for free or at a discounted rate. On the other hand, a single journey ticket can only be used on the subway, and you must also pay a deposit of 500 won, which will be refunded to you when you return it.

### ⚙️ How to Use the Subway

- Make sure to board the train that is bound for your destination.
- In some subway segments, there are express trains in operation. These trains do not stop at all stations, so you must be careful when boarding.

### ⚙️ Express Train Service Segments

(Gyeongin Subway Line 1 Bupyeong Station Yongsan Station; Dongincheon Station Yongsan Station; Seoul Subway Line 9 Gimpo Airport Sports Complex; AREX Incheon International Airport Station Seoul Station) Change of route map (with additional photos attached to lines 1 and 7)

## ⚙️ Types of Subway

- **Gyeongin Subway:** Lines 1 to 9, etc., that travel between Incheon ↔ Seoul, Seoul ↔ Seoul, and Seoul ↔ Gyeonggi. In Incheon, there are Gyeongin Line 1 stations between Bucheon and Seoul.
- **Incheon Subway:** The Incheon Subway allows users to travel between different areas of Incheon and transfer to and from Gyeongin Line 1 (Bupyeong Station and Juan Station), Line 7 (Bupyeong-gu Office), Suin-Bundang Line (Woninjae Station), and AREX (Gyeyang Station and Geomam Station).
- **Airport Railroad Express (AREX):** This line connects Incheon International Airport ↔ Incheon ↔ Seo with regular trains that stop at all stations and direct trains that stop only at Incheon International Airport and Seoul stations.
  - ▶ Regular train (66 minutes, stops at all 13 stations from Incheon Airport Station to Seoul Station and vice versa, departs every 12 minutes)
  - ▶ Direct train (51 minutes, non-stop operation from Incheon Airport Station to Seoul Station and vice versa, departs every 30 minutes). Passengers on AREX regular trains can transfer to Incheon Line 1 (Gyeyang Station), Incheon Line 2 (Geomam Station), Seoul Line 1 (Seoul Station), Line 2 (Hongik University Station), Line 4 (Seoul Station), Line 5 (Gimpo Airport Station and Gongdeok Station), Line 6 (Digital Media City Station and Gongdeok Station) or Gyeongin Line (Digital Media City Station, Hongik University Station, Gongdeok Station, Seoul Station).
- **Suin-Bundang Line:** A subway line connecting Incheon and Suwon that makes it easy to travel to and from Ansan and Oido in Gyeonggi-do Province.

## Tips for Subway Users



You can obtain information on subway schedules from the following websites:

- **Incheon Transit Corporation (Incheon Lines 1, 2 and 7(Kkachiul-Seongnam):**  
www.ictc.or.kr (available in English, Chinese, and Japanese) ☎ 1899-4446
- **Seoul Metro (Seoul Lines 1 to 8):** www.seoulmetro.co.kr  
(available in English, Chinese, and Japanese) ☎ 1577-1234
- **Seoul Metro Line 9:** http://www.metro9.co.kr (available in English) ☎ 02-2656-0009
- **KORAIL Airport Railroad:** www.arex.or.kr (available in English, Chinese, and Japanese)  
☎ 1599-7788

### What is the Seoul Capital Area Transfer System?

An integrated public transportation system in the Seoul capital area in which fares vary depending on distance traveled but regardless of the means of public transportation.

When transferring between buses, subway systems, etc., of Incheon, Gyeonggi, and Seoul, the total fare will be charged based on the total distance traveled (you can use a transportation card). For transfers, the fare must be paid with a transportation card, and you must tap your card on the reader when getting on/off.

### Transfer (Example)

Bus-(Get on the train within 30 min after getting off the bus)-Subway-(Get on the train within 30 min after getting off the bus)-Bus

### Transfer Application Time

- **Between 7:00~21:00:** within 30 minutes after tapping to get off
- **Between 21:00~07:00:** within 60 minutes after tapping to get off

### Rules of Transfer

- The transfer discount will not apply if you transfer to the same-numbered bus.
- **Total number of transfers:** Transfer discounts are applicable for up to 5 modes.
- **Multi-passenger (2 or more) transfer:** Transfer discounts apply only to the same number of people. (Applicable to buses only, not the subway)
- The transfer discounts will not apply to consecutive subway travel (i.e., when you exit the platform area and re-enter).

## Taxi (Cab)

You can pay the taxi fare in Korea in cash or with a credit or transportation card. However, transfer discounts do not apply to taxis.

### Regular Taxi

- It allows you to travel to your desired destination at once and accommodates up to 4 passengers.
- The basic rate is 3,800 won (as of 2019).
- The fare increases by 100 won depending on the distance (135 meters) and the time (33 seconds), and a 20% surcharge is added after midnight (12 pm).

### ⚙️ Call Taxi

When you call the taxi company, they will dispatch a driver to the requested location. The base fare varies across taxi companies.

※ **Call taxi companies in Incheon:** Incheon Call 1577-5588, Seven Call 032-611-7777, Ganghwa call 1577-6669

### ⚙️ Large Taxi

It can accommodate up to 9 passengers. The base fare is 6,500 won (as of 2019), and 200 won is charged for every 151m traveled.

### ⚙️ Model Taxi (Deluxe Taxi)

Model taxis are superior to regular taxis in terms of vehicle model and service. The base fare is 6,500 won (as of 2019), and 200 won is charged for every 151m traveled.

## Tips for Taxi Users



#### Taxi-Related Smartphone App

- Download and use 'Easy Taxi', 'Dangol Taxi', and/or 'Incheon Taxi Ansim Service' (Secure Taxi Service).
- Incheon Transit Corporation offers call taxi service for persons with disabilities 1577-0320. You can apply online at the Incheon Mobility Support Center website ([www.intis.or.kr](http://www.intis.or.kr)).



#### FC Taxi Ansim Service (Secure Taxi Service)

- Hold your smartphone on the NFC tag in the taxi to open the mobile app. You can send the license plate number, your current location, your trip's start/end time, etc., to anyone you wish.



### 4 Intercity Bus & Express Bus

If you want to get to areas outside Incheon, it is convenient to travel by an intercity bus or express bus, which you can find at the Incheon Bus Terminal. The terminal is highly accessible as it is connected to Incheon Bus Terminal Station (Incheon Line 1).

• **Ticketing:** It is not possible to book a bus trip to Seoul, Gyeonggi-do, or areas in between because there is no designated seat. You can pay with your transportation card at Incheon General Terminal. Also, you can book online and obtain your ticket using one of the ticketing machines in the waiting area, the terminal, or at a ticketing desk.

- **Online booking:** You can book online on the following websites:
  - ▶ **Intercity bus:** Bus Tago website: [www.bustago.or.kr](http://www.bustago.or.kr) (available in English, Chinese, and Japanese)
  - ▶ **Express bus:** Kobus website: [www.kobus.co.kr](http://www.kobus.co.kr) (available in English, Chinese, and Japanese)

### ⚙️ Incheon Bus Terminal

- **Subway:** Get off at Incheon Bus Terminal Station on Incheon Line 1
- **Inquiries:** ☎ 1666-7114

### 5 Train

When traveling from Incheon to other areas (especially to the south), you can take a train other than an intercity bus. However, there are no train stations in Incheon, so you need to go to Gyeongin Line 1 Station, Yeongdeungpo Station, or Seoul Station.

- **Let's KORAIL website:** [www.letskorail.com](http://www.letskorail.com) (available in English, Chinese, and Japanese) 1544-7788

### ⚙️ Types of Trains

#### 🕒 Regular Trains

- **Mugunghwa:** It connects Seoul, Jeolla-do, Gyeongsang-do and Gangwon-do. The fare is cheaper than other trains, but the travel time is longer.
- **Saemaeul:** It is faster than Mugunghwa and divided into general and special cabins. The fare is a bit more expensive compared to Mugunghwa.

#### 🚄 High-speed Trains

- **KTX:** Korea's first high-speed train that will take you to your destination 2 to 3 hours (depending on the distance) earlier than Mugunghwa. The fare is more expensive than Mugunghwa and Saemaeul.
- **Sightseeing trains:** Various sightseeing trains depending on the region and theme, with each route associated with famous tourist attractions. For more information, visit the Let's KORAIL website.

### ⚙️ How to use

- **Online booking:** On the website, you can book a train ticket (excl. AREX).
- **On-site ticketing:** You can purchase a train ticket at any train station (Seoul Station, Yeongdeungpo Station, etc.) or Bupyeong Station (Incheon Line 1) in Incheon.



## 6 Air Travel

Tickets can be booked on the Internet, by phone, etc., directly with the airline, via a travel agency, or in person at the airport.

### 1 Domestic Flights

There are two major airlines, Korean Air and Asiana Airlines, and several smaller airlines operating domestic routes. Domestic flights are mainly available via Gimpo Airport. Information on domestic flights and airports can be found on the Korea Airports Corporation website ([www.airport.co.kr](http://www.airport.co.kr)).

- ※ Get real-time information on flight and ticket reservations of airports by clicking on the region (14 locations, including Gimpo, Gimhae, and Jeju) at the top of the website. Some regional airports also offer international flights.

• **Korea Airports Corporation website:** [www.airport.co.kr](http://www.airport.co.kr) (available in English) 1661-2626

### 2 International Flights

Incheon International Airport handles the vast majority of international flights. You can check the international routes and flight schedules on the Incheon International Airport Corporation website.

- ※ Go to the Incheon International Airport website ([www.airport.kr](http://www.airport.kr)) → Departure/Arrival.
- ※ Obtain information on boarding locations about various means of transportation available at Incheon Airport by visiting the Incheon International Airport website ([www.airport.kr](http://www.airport.kr)) → Transportation/Parking → Public Transportation /Parking Information.

• Incheon International Airport website: [www.airport.kr](http://www.airport.kr) (available in English, Chinese, and Japanese)  
☎ 1577-2600

## 7 Sea Travel

Since passenger ship and ferry operations are affected by the weather, you should check the real-time operation information to know the exact schedule before you begin your trip.

### 1 Domestic and International Passenger Ships

- ※ **Schedules and fare information:** Visit the Incheon Port Facility Management Center website → Operation Information

### Domestic Trip

• **Incheon Port Authority website:** [www.ipfc.or.kr](http://www.ipfc.or.kr) ☎ 1599-5985 (ARS available in Chinese)

※ Incheon citizens are eligible for a 45% discount for domestic ferries and do not need to pay a weekend surcharge.

### International Trip

• **Incheon Port Facility Management Center website:** [www.ipfc.or.kr](http://www.ipfc.or.kr) ☎ 1599-5985  
(ARS available in Chinese)

## Other Docks

### Sammok Dock and Wolmi Dock

You can travel by ferry to and from Wolmido and islands in Ongjin-gun, Incheon.

• **Website:** [www.sejonghaeun.com](http://www.sejonghaeun.com) ☎ 032-751-2211

※ Visit the website for information on the ferry schedules and fares.

## **3 Telecommunication**

### Telephones and Cell phones

#### Landline telephones

Call a landline service provider if you want to use a landline phone at home or in the office. Installation and additional costs may be incurred when installing the phone. Major landline service providers in Korea are KT (☎ 100), SK Broadband (☎ 106), and LG U+ (☎ 101). The current trend, however, is to switch from a landline to an Internet phone, and we advise you to choose a company that offers the best plan and service. Foreigners should submit a copy of their passport and foreign residence card to apply for landline phone service.

## 2 Cell phones

In Korea, almost everyone has a cell phone. Leading telecommunication service providers include SKT, KT, and LGT, which offer different plans and benefits.

※ Prepaid cell phone: The fee is slightly higher than regular cell phones (postpaid), but there is no contract period, meaning you can use it for only a desired duration.

## 3 Making Phone Calls

• **International calls** : Press (service number → country code → area code → phone number).

• **Long-distance calls** : In Korea, there are a total of 17 area codes. Within the same area, you only need to dial the phone number without the area code, but when calling someone in a different region, you must dial the area code first and then the phone number.

▶ Example) Calling from Incheon to Incheon: ☎ 000-0000

Calling from Incheon to Busan: ☎ 051-000-0000

## 2 Internet

In Korea, high-speed Internet lines are accessible everywhere. Major Internet service providers are KT Olleh, SK Broadband, and LG U+. You can sign up by contacting the company of your choice by phone or on the website. Once your installation request is received, the company will dispatch a technician.

Sign-up fees, basic fees, equipment (modem) fees, etc., will be incurred. Make sure to choose the best plan for you, considering how much Internet you typically use and the benefits/discounts they offer. In most cases, you can receive discounts for signing a 1-, 2- or 3-year agreement, but if you terminate the contract before the expiration date, you may have to return all the discounts you have received as a penalty.

※ You can get discounts by combining different products (Internet, telephone, cell phone, etc.).

## 3 Broadcasting

### 1 Terrestrial TV

Since terrestrial television has a limited range of radio frequencies, only the approved broadcasters assigned radio frequencies can use them to transmit television signals. Terrestrial broadcasting stations include KBS, MBC, SBS, and EBS, which are subject to more restrictions than other broadcasting stations. They must, for example, comply with the relevant laws and serve the public interest.

## Cable TV

Cable broadcasting stations, which are free from the restrictions faced by terrestrial broadcasting stations, tend to broadcast more specialized programs. It is possible to use foreign satellite TV programs using an optical cable. If you install a modem and a cable converter, you can receive additional services such as video phone, Internet, video on demand (VOD), distance education, and home banking. Foreigners need to present their foreign residence card to sign up. Since service providers may require different documents, call the cable television service provider for details. In addition to service fees, equipment (e.g., modem) and installation fees may be incurred.

## Satellite TV

Satellite TV, created to overcome terrestrial TV's limitations, retransmits the television signals to a receiving antenna on the ground using a broadcasting satellite. You can watch channels from all over the world on satellite TV.



## Household Waste Disposal

In Korea, the volume-based waste fee system with standard plastic garbage bag is in place to charge people a fee based on the amount of garbage they throw away. This system has been introduced to encourage recycling and reduce waste. Trash must be put in a standard plastic garbage bag, which can be purchased at a nearby convenience store.

### General Waste

Discard general waste in a standard plastic garbage bag and throw it away at a designated location so it can be picked up at a specified time.

- Standard plastic garbage bags are different for each district (gu), so make sure you buy the ones designated for yours.
- If you moved to a different district and standard plastic garbage bags remain, you can bring them to the local community centers and attach a usable sticker on the bag to use.

## 2 Food Waste

Once collected and processed, food waste is used as animal feed or compost, so foreign matter and water must be removed and discharged separately. Get a food waste standard plastic garbage bag, sticker, or payment certificate for food waste, and throw it away at a designated place. Keep the container inside after the waste is picked up, as it may be damaged.

※ There is a designated food waste container for apartments and public housing.

### ⚙️ How to Dispose of Food Waste

- Any high-sodium food materials such as soybean paste, red pepper paste, and soy sauce is disposed of as general waste. Kimchi is rinsed with water and disposed of as food waste.
- Remove toothpicks, wooden chopsticks, plastics, bottle caps, and shellfish.
- Remove any substances that are not considered food waste and dispose of them in a standard plastic garbage bag for general waste.

## 3 Recyclables

You can contribute to environmental conservation and protection by separating your recyclables, which are valuable resources. The government recommends separate disposal and collection of recyclables according to their type and recycling guidelines.

### ⚙️ Four Key Points in Recycling

- ① **Empty:** Empty all the contents from the container.
- ② **Rinse:** Wipe or rinse off any foreign substance, food residue, etc.
- ③ **Separate:** Remove the parts made of a different material from the body, such as the label and lid.
- ④ **Sort and separate:** Separate the recyclables according to the type of material they are made of and their properties before disposing them in the collection bins.

## 4 Small Home Appliances Waste

Cell phones and small home appliances (check the gu office website, as the details vary) can be discarded without paying an additional fee. Dispose of them in the collection bin for small electronics (apartment complex or dong community center). Mobile phone vendors also accept cell phones. If you want to throw away five or more small electronics, use the old electronics pickup service (1599-0903) free of charge.

## 5 Large Home Appliances Waste

Large home appliances, such as televisions and refrigerators, can be discarded using the old home appliances pickup service (1599-0903), free of charge. If you purchase a new product, you can request the vendor pick up the old one. For large home appliances that are not picked up for free, follow the disposal method and procedure specified for bulky waste.

## 6 Bulky Waste

Bulky waste cannot be put in a standard plastic garbage bag. (e.g., furniture, home appliances, etc.) Please get in touch with the local community service center to have it picked up.

### | How to dispose of bulky waste and report its disposal |

#### ⚙️ Request Pickup

Purchase a “report receipt for bulky waste disposal” from the gu office or a selected vendor (supermarkets, apartment management office, etc.) and leave it at the designated location at the appointed time.

📍 The sale locations may vary across gun/gu, so check the website or with the Cleaning Division.

※ Contact Information of Gun/Gu Cleaning Division

| Region      | Phone        | Region      | Phone        |
|-------------|--------------|-------------|--------------|
| Jung-gu     | 032-760-7412 | Bupyeong-gu | 032-509-6612 |
| Dong-gu     | 032-770-6412 | Gyeyang-gu  | 032-450-5463 |
| Michuhol-gu | 032-880-4362 | Seo-gu      | 032-560-4553 |
| Yeonsu-gu   | 032-749-7856 | Ganghwa-gun | 032-930-3338 |
| Namdong-gu  | 032-453-2563 | Ongjin-gun  | 032-899-2624 |

#### ⚙️ Reporting online

Go to the gu/gun office website and find the Cleaning/Environment/Sanitation page, where you will see Bulky Waste Disposal. Pay the fee and be issued a sticker for bulky waste pickup.

## Free Pickup Service for Large Home Appliances Disposal Center

Each gu (district) in Incheon is operating private disposal centers. Disposal centers repair old electronics, furniture, etc., to display and sell them. When you need to throw away a large home appliance, contact your local center, which will visit your home to pick it up for free. (On a portal site, search for Incheon Home Appliances Disposal Center to obtain website information and phone numbers.)



## 5 Use of Public Administration & Services (Public Administrative Offices, Police Stations, Fire Stations, Post Offices, etc.)

### 1 Public Administrative Offices, Police Stations, and Fire Stations

#### 1 Public Administrative Offices

• **Government 24 website:** [www.gov.kr](http://www.gov.kr) ☎ 1588-2188

(available in English, Chinese, Japanese, Vietnamese, Thai, Indonesian, and Mongolian)

The primary public administrative offices that most people frequently use are the Dong Community Center and si/gun/gu offices. These offices provide a wide range of services to improve residents' quality of life. These offices manage affairs related to the cultural, welfare, and education programs, public facilities, and amenities management and provide public services such as issuing diverse certificates and registration. It is also possible to obtain public services at a certificate issuance kiosk at some subway stations or on the Government 24 website. To obtain certain types of documents, however, you must visit the administrative office in person, so make sure you check them in advance.

• Public Services Available for Foreign Residents via Government 24

| Category   | Agency  | Competency authority                           | Authentication certificate                     |
|--|---|--|--|
| Proof of foreigner registration  | Si/gun/gu office and Immigration Office (main and branch offices) | Ministry of Justice                            | Ministry of Land, Infrastructure and Transport |
| Proof of nationality   | Ministry of Justice   |  |  |
| Proof of domestic residence registration                               | Immigration Office (main and branch offices)                      |  |  |
| Issuance of confirmation of renunciation of foreign citizenship        |   |  |  |
| Issuance of confirmation of pledge to not exercise foreign citizenship |   |  |  |
| Issuance of proof of acquisition of citizenship                        |   |  |  |
| Notification of Land Acquisition by Foreigner                          | Si/gun/gu office  | Ministry of Land, Infrastructure and Transport |  |

※ For other online public services, check the Government 24 website → Services for Foreigners.

## 2 Police Stations

If you are a victim of a crime or witness an accident, report it to the police ( 112) or a patrol division. Reports can also be made on the Police Civil Service Portal ([minwon.police.go.kr](http://minwon.police.go.kr)).

## 3 Fire Departments

To report an emergency such as fire, or disaster, request rescue, first aid, and emergency medical services, dial ☎ 119.



## 2 Post Offices

In addition to offering postal services, Korea Post also provides courier, banking, and insurance services.

• **Post Office Website:** [www.epost.go.kr](http://www.epost.go.kr) (available in English) ☎ 1588-1300

### | Post Office Hours of Operation for Mail Service |

• **Counter:** 09:00~18:00

### | Post Office Financial Service Hours |

• **Counter:** 09:00 to 16:30

• **CD/ATM:** 09:00 to 18:00

• **365 Automation:** 07:00 to 23:30 / 05:00 to 04:00 the next day (23 hrs) at some locations

## 1 Domestic Mail

It is primarily divided into ordinary mail (regular mail, same-day express, next-day express) and parcel (regular parcel, registered parcel). Express mail is more expensive than standard mail, but it is delivered the next day, whereas regular mail generally takes four days. You can send a parcel by visiting the post office or using door-to-door service (courier service).

## 2 International Mail

It is divided into ordinary mail, parcel, international express (Express Mail Service, EMS), sea mail, and airmail. Generally, the weight limit on packages is 20kg and 30kg for EMS. The postage rates depend on the destination country and the mail's type, size, and weight.

## 3 Courier Service

Korea has an advanced courier industry with several major service providers. Courier service refers to a service where the package is delivered directly to the recipient and is generally more expensive than regular mail service. However, you can easily send goods anywhere in the country.

## 3 Public Baths

There are a lot of public bathing facilities such as a bathhouse, saunas, and jjimjilbang (Korean-style dry saunas) in Korea. They can be easily found in every neighborhood.

## 6 Economic Life

### 1 Conventional Market Information

| Region      | Market                                 | Address                                       |
|-------------|--|---|
| Jung-gu     | Incheon Complex Fish Market            | 37, Yeonanbudu-ro 33beon-gil (Hang-dong)      |
|             | Sinpo International Market             | 11-5, Uhyeon-ro 49beon-gil (Sinpo-dong)       |
|             | Shinheung Market                       | 23-7, Dowonro, Jung-gu (Seonhwa-dong)         |
| Dong-gu     | Hyundai Market                         | Songnimro 109beongil (Songnim-dong)           |
|             | Songhyeon Market                       | 12, Hwadojin-ro 44beon-gil (Songhyeon-dong)   |
|             | Incheon Industrial Distribution Center | 23, Bangchuk-ro 83beon-gil (Songnim-dong)     |
|             | Dongbu Market                          | 164-5, Saetgol-ro (Songnim-dong)              |
|             | Songlim Tool Market                    | 98, Bongsu-daero (Songnim-dong)               |
|             | Songhyeon Free Market                  | 68, Jungang-ro (Song Hyeon-dong)              |
|             | Central Market                         | 5-19, Jungang-ro (Geumgok-dong)               |
| Michuhol-gu | Seokbawi Market                        | 15, Gyeongwon-daero 852beon-gil (Juan-dong)   |
|             | Yongnam Market                         | 17-1, Inju-daero 266beon-gil (Yonghyeon-dong) |
|             | Nambu Market                           | 274-30, Inha-ro (Juan-dong)                   |
|             | Yonghyeon Market                       | 57-1, Yongsam-gil (Yonghyeon-dong)            |
|             | Singi Market                           | 6, Singi-gil 58beon-gil (Juan-dong)           |
|             | Tojigeumgo Market                      | 5, Nakseomjung-ro 38beon-gil (Yonghyeon-dong) |
|             | Hakik Market                           | 400, Hannaru-ro (Hagik-dong)                  |
|             | Jeil Market                            | 5, Jeil-ro 37beon-gil (Dohwa-dong)            |
|             | Sungui Peace Market                    | 309 Chamjeonoelo (Sungui-dong)                |
|             | Industrial Complex Market              | 399, Seokjeong-ro (Juan-dong)                 |

| Region      | Market                              | Address                                      |
|-------------|-------------------------------------|--|
| Yeonsu-gu   | Songdo Yeokjeon Market              | 13-3, Hannaru-ro 196beon-gil (Ongnyeon-dong) |
|             | Okryeon Traditional Market          | 35, Dokbae-ro 40beon-gil (Ongnyeon-dong)     |
| Namdong-gu  | Guwol Market                        | 21-13, Hogupo-ro 790beongil (Guwol-dong)     |
|             | Incheon Moraenae Traditional Market | 818, Hogupo-ro (Guwol-dong)                  |
|             | Jangseungbaegi Market               | 27, Inju-daero 888beon-gil (Mansu-dong)      |
|             | Mansu Market                        | 8-5, Mansu-ro 37beon-gil (Mansu-dong)        |
|             | Ganseok Free Market                 | 312-1, Baekbeom-ro (Ganseok-dong)            |
|             | Guwol Wholesale Traditional Market  | 527, Inha-ro (Guwol-dong)                    |
|             | Namdong Industrial Tools Market     | 4-7, 4-19, Euncheong-ro (Gojan-dong)         |
|             | Sorae Port Traditional Fish Market  | 86-17, Jangdo-ro (Nonhyeon-dong)             |
| Bupyeong-gu | Yeolwoomul Traditional Market       | 18, Baegonnam-ro 21beon-gil (Sipjeong-dong)  |
|             | Jinheung Market                     | 27, Buheung-ro 304beon-gil (Bupyeong-dong)   |
|             | Bupyeong Market                     | 29-10, Jubuto-ro 22beongil (Bupyeong-dong)   |
|             | Ilshin Market                       | 14-7, Gyeongin-ro 1118beon-gil (Iljin-dong)  |
|             | Bupyeong Kkang Market               | 36-3, Sijang-ro 79beon-gil (Bupyeong-dong)   |
|             | Bupyeong Culture Street             | 6, Gwangjang-ro (Bupyeong-dong)              |
| Gyeyang-gu  | Jakjeon Market                      | 16, Jakjeonsijang-ro (Jakjeon-dong)          |
|             | Mt. Gyeoyang Traditional Market     | 62-1, Byeongbangsijang-ro (Byeongbang-dong)  |
|             | Gyesan Market                       | Gyesancheondong-ro 19beon-gil (Gyesan-dong)  |
| Seo-gu      | Gajwa Market                        | 18-19, Janggogaero 337beon-gil (Gajwa-dong)  |
|             | Jeongseojin Jungang Market          | 21-11, Gajeongro 380beon-gil (Gajeong-dong)  |
|             | Incheon Livestock Market            | 35, Gajwa-ro 96beon-gil (Gajwa-dong)         |
|             | Singeobuk Market                    | 208, Gajeong-ro (Seongnam-dong)              |
|             | Gangnam Market                      | 14 Gangnam-ro (Seoknam-dong)                 |

| Region      | Market                      | Address                                     |
|-------------|-----------------------------|---|
| Ganghwa-gun | Ganghwa Jungang Market      | 429, Ganghwa-daero, Ganghwa-eup (Sinmun-ri) |
|             | Ganghwa Folk Flea Market    | 17-9, Jungang-ro, Ganghwa-eup (Gapgot-ri)   |
|             | Ganghwa Bus Terminal Market | 43, Jungang-ro, Ganghwa-eup (Namsan-ri)     |

## 2 Banks

- **Savings:** You can open an account at a bank to deposit and save money.
- Foreign residents can make bank transactions at banks.
- There are restrictions on the issuance of credit cards, but not for debit cards.

### 1 Types of Bank Accounts and Transactions

- **Deposit ("yegeum") :** You can receive interest on the money you have deposited
- **Regular deposit ("botong yegeum"):** You can freely deposit and withdraw money at any time, but the interest rate is low.
- **Term deposit ("jeonggi yegeum"):** You can deposit a large amount of money for a long term, which is paid at a relatively high-interest rate.
- **Installment savings ("jeokgeum"):** This is a way of regularly depositing a certain amount and receiving principal and interest after a designated period.
- **Regular installment savings ("jeonggi jeokgeum"):** You deposit a fixed amount of money every month and receive principal and interest after a designated period. The interest rate is relatively high.
- **Free Deposit and Savings ("jaju jeokgeum"):** You can deposit any amount at any frequency. The longer the term, the higher the interest rate will be.

### | How to Open a Bank Account and Get a Card |

- Foreigners can open a bank account for deposit and withdrawal by presenting their passport, foreign residence card, and the required application form. Once the bank account is opened, you can deposit and withdraw money by presenting your bankbook with your seal or signing the documents.
  - ▶ **Debit card:** You can make transactions within the balance on your bank account.
  - Credit card: You can spend for the product or service and then pay later with your own money.
  - ▶ **Remittance:** Fill out the application form provided at the bank and present your passport and foreigner registration card.

- Foreigners can remit up to USD 50,000 per year (remittance + exchange) via a designated foreign exchange bank. You may remit money within the acquired income if you have documents providing how you have obtained the funds.

※ If you have income, an income certificate is needed.

## 2 How to Pay Utility Bills

- **Direct payment** : Pay the bill in person at a financial institution.

At some banks, tellers do not assist in paying utility bills; machines are equipped for the services. You should hold an account of the bank to use the machines.

- **Automatic withdrawal** : You can arrange for your utility bills to be paid automatically with the funds in your bank account on the designated day each month. You can set it up at the bank or by calling the service provider. You should remember the withdrawal date, and make sure to leave sufficient funds in your bank account for the automatic payments.

## 3 Other Financial Services

- **Online banking**: This refers to banking services provided via the Internet.

▶ You can check your balance and transfer money without visiting a bank.

▶ To use online banking service, you need to receive a certified authentication certificate issued by Korea Financial Telecommunications & Clearings Institute (KFTC). It can be stored on your computer, and a unique security card and one-time password (OTP) device issued by your bank.

- **Telebanking**: This refers to banking over the phone.

▶ Like online banking, a unique password and a code table are required.

▶ You can apply for telebanking service together with online banking.

- **Foreign exchange**: You can exchange foreign currency or traveler's checks by presenting your passport and foreign residence card at any currency exchange location at the airport or banks. The currency exchange limit is under the Foreign Exchange Transactions Act, and the exchange rate fluctuates according to market conditions.

### 3 Taxes

Taxes are largely divided into national taxes collected by the central government for national defense, social services, etc., and local taxes collected by local governments such as si (cities), gun (counties), and gu (districts) for local transportation, welfare services, etc. Foreigners are obligated to pay taxes as a resident same as Koreans.

#### ⚙️ National Taxes

National taxes, used as financial resources to run and manage the state, include income tax, corporate tax, inheritance tax, gift tax, comprehensive real estate tax, value-added tax (VAT), and transfer income tax.

- **National Tax Service website:** [www.nts.go.kr](http://www.nts.go.kr) (available in English) ☎ 126

#### ⚙️ Local Taxes

Local taxes, collected by the taxation division of local governments, include acquisition tax, resident tax, and vehicle tax.

- **Incheon Metropolitan City Electronic Notification and Payment System website:** [etax.incheon.go.kr](http://etax.incheon.go.kr)  
☎ 032-440-3061~2 86

### 7 Education

Incheon Metropolitan Office of Education [www.ice.go.kr/](http://www.ice.go.kr/) (available in English, Chinese, and Japanese)

The educational system of Korea consists of four stages: 6 years of elementary school, three years of middle school, three years of high school, and four years of college (2 to 3 years in the case of junior college). Elementary and middle school education is compulsory.

#### ⚙️ Education System

- **Before enrollment:** There are kindergartens and daycare centers for preschool children.
- **Elementary school:** A school providing mandatory education to children starting at the age of 6 for six years
- **Middle school:** A school providing three years of compulsory education
- **High school:** A school providing general higher secondary education or vocational education to students who have graduated from middle school, and according to the curriculum, it is divided into public high

school, particular purpose high school, specialized high school, and independent high school, each providing three years of education.

## Curriculum

Every school in Korea divides the school year into two semesters. The first semester is followed by a summer break, and the second semester is followed by a winter break and a year-end vacation before the start of a new school year. Generally, the first semester lasts from March 1 until the day determined by the head of the school in consideration of the number of school days, holidays, and curriculum. The second semester lasts from the day after the end of the first semester to the last day of February the following year.

## Options in Education

Foreign residents with children can send their children to a 'regular Korean school' 'school for foreigners', or 'international school'. These three types of schools differ in characteristics.

### Enrolling in a Korean School

Foreign children can enroll in a regular Korean school, but they must be able to speak Korean fluently. You can find detailed information on the admission criteria at the competent education office. Also, there are public and private schools, and their tuition fees differ.

## Offices of Education in Incheon

| Name                                     | Address   | Website  | Phone          |
|--|---|--|----------------|
| Incheon Metropolitan Office of Education | 9, Jeonggak-ro, Namdong-gu (Guwol-dong)                       | <a href="http://www.ice.go.kr">www.ice.go.kr</a><br>(English, Japanese, and Chinese) | 032-423-3303   |
| Nambu Office of Education                | 45, Chinatown-ro 51beon-gil, Jung-gu (Songhak-dong 1-ga)      | <a href="http://nambu.ice.go.kr">http://nambu.ice.go.kr</a>                          | 032-762-7361   |
| Dongbu Office of Education               | 923, Inju-daero, Namdong-gu (Mansu-dong)                      | <a href="http://dongbu.ice.go.kr">http://dongbu.ice.go.kr</a>                        | 032-460-6000   |
| Bukbu Office of Education                | 53, Bupyeongmunhwa-ro 53beon-gil, Bupyeong-gu (Bupyeong-dong) | <a href="http://bukbu.ice.go.kr">http://bukbu.ice.go.kr</a>                          | 032-524-9631~2 |
| Seobu Office of Education                | 713, Gyeongmyeong-daero, Seo-gu (Gongchon-dong)               | <a href="http://seobu.ice.go.kr">http://seobu.ice.go.kr</a>                          | 032-5606-600   |
| Ganghwa Office of Education              | 607, Jungang-ro, Bureun-myeon, Ganghwagun (Samseong-ri)       | <a href="http://ganghwa.ice.go.kr">http://ganghwa.ice.go.kr</a>                      | 032-930-7777   |

### Enrollment and Transfer of Foreign Students

- According to the Elementary and Secondary Education Act, enrollment and transfer of international students must be permitted by the school's principal in question per the school regulations.
- Children of illegal immigrants are also permitted to attend elementary and middle schools.
- If enrollment in a school for foreigners is difficult, a foreign child may enroll in a regular Korean school. Transfers are also possible in the middle of the school year.
- In the case of a child who graduated from an overseas school, you must submit the following documents to the local education office for school assignment and enrollment.
  - ▶ A transcript of all grades issued by the principal of the overseas school
  - ▶ Certificate of enrollment and a foreign government certificate equivalent to a copy of the family register of Korea
  - ▶ Proof of residence in Korea
  - ▶ Original and photocopy of the foreign residence card

### Standards for Recognition of Foreign Education

#### | Recognition of School Curriculum |

- Recognized based on Korea's elementary, middle, and high school curriculum and years of education
- If the foreign school system is different from the Korean school system, the grade level and curriculum are recognized based on the years of education for each school level.

## Enrolling in a School for Foreigners

### School for Foreigners

Schools for foreigners or foreign schools in Korea are those that have been accredited as a school under Article 149 of the former 「Education Act」 or are registered under 「Immigration Act」. They teach in their language and according to the educational policies of their home country.

If you want to enroll your child in a school for foreigners, submit the application documents directly to the school.

- Required Documents for Admission Application (Applicable to All)

### If one of the parents or both are a foreigner

Copy of passport/citizenship card (student, parent), foreign residence card (parent), and immigration certificate



## 2 Children of Korean nationality (incl. those with dual citizenship) who have lived abroad for three years or longer or children of foreign nationality (must have lived abroad for at least three years) whose parents are both Korean nationals

Copy of passport (student, parent), certificate of enrollment at an overseas school for at least three years (6 semesters), and corresponding transcript (student)

- ※ Other required documents vary from school to school, so check with the school of your choice. It is possible to apply for admission in the middle of the school year, but the enrollment date is designated every quarter. Schools may conduct a screening (document review, interview, etc.) for admission.
- ※ In the case of children with special needs, check with the school to see whether it has the necessary curriculum and facilities.

### ⚙ Schools for Foreigners in Incheon

#### | Incheon Overseas Chinese Zhongsan Middle & Elementary School |

- **Address:** 19, 55beon-gil, Chinatown-ro, Jung-gu (Seonrindong) ☎ 032-772-3615
- **Language:** Chinese
- **Levels of education:** Kindergarten (K) – Gr.12

#### | Chadwick International (Songdo) [www.chadwickinternational.org](http://www.chadwickinternational.org) (available in English) |

- **Address:** 45, Artcenter-daero 97beon-gil, Yeonsu-gu (Songdo-dong) ☎ 032-250-5000
- **Language:** English
- **Levels of education:** K- Gr.12

#### | Cheongna Dalton School [www.daltonschool.kr](http://www.daltonschool.kr) (available in English) |

- **Address:** 344, Cheomdandong-ro, Seo-gu (Cheongna-dong) ☎ 032-563-0523
- **Language:** English
- **Levels of education:** K-12
- ※ In the case of Chadwick International and Cheongna Dalton School, the domestic academic background is recognized upon completion of the domestic curriculum.

### ⚙ Multicultural Schools

#### | Incheon Hannuri School [www.hannuri.icesc.kr](http://www.hannuri.icesc.kr) (available in English, Chinese, Japanese, and Russian) |

- **Address:** 215, Nonhyeongojan-ro, Namdong-gu (Nonhyeondong) ☎ 032-627-2250
- **Curriculum:** Elementary, middle, and high school

## Korea's first public multicultural boarding school

※ You can obtain related information from the Ministry of Education's website on overseas educational institutes and schools for foreigners ([www.isi.go.kr](http://www.isi.go.kr)).

### ⚙️ Other Websites for Education Support

Use the free cyber education website to save money on private education.

- Incheon Metropolitan Office of Education's Multicultural Education Support Center ([culture.ice.go.kr](http://culture.ice.go.kr)) / ☎ 032-420-8265~9

### ⚙️ Homeschooling

Homeschooling has become a new alternative, as it is now possible to obtain educational materials on the Internet. Non-Korean parents who wish to provide their children with high-quality education without paying tuition fees for foreign schools can find relevant information at [www.usdla.org](http://www.usdla.org) or [www.homeschool.com](http://www.homeschool.com).

### ⚙️ GED Preparation Class for Married Immigrants

Married immigrants can take free preparation courses for qualification examinations for middle and high school graduation (similar to "general equivalency diploma (GED)").

- **Eligibility:** Married immigrants whose highest level of education is less than high school graduation
- **How to apply:** Visit the local (gun/gu) multicultural family support center to apply
- **Application documents:** Application form and certificate of the final level of education
  - ※ For inquiries about the location and institution where you can take the course, contact the Multicultural Family Support Center.



## 8 Health & Medical Care (Medical Institutions, etc.)

In Korea, the practices of prescribing and dispensing drugs are assigned to doctors and pharmacists, respectively. It would be best if you had a prescription from a doctor to purchase prescription drugs at a pharmacy. You can buy over-the-counter medications at a pharmacy or a convenience store without a doctor's prescription. (e.g., digestives, painkillers, dietary supplements, etc.)

## 1 Types of Medical Institutions

Medical institutions are classified according to size, class, the types of services they provide, and the scope of the services offered. If you are experiencing a minor medical condition, such as a cold or digestive disorder, go to a clinic for treatment. If your condition worsens or you need a more thorough examination, go to a hospital, general hospital, or tertiary hospital. In the case of going to a tertiary hospital, you are eligible for a health insurance coverage only if you submit a referral form from a doctor who provided primary treatment and care. Cases where insurance coverage is provided without a referral form include emergency patients, childbirth, dental care, rehabilitation medicine, family medicine, and hemophilia patients.

| Category                     | Stage 1   |  | Stage 2   |
|------------------------------|---|--|---|
| Type of medical institution  | Clinics and public health centers   | Hospitals and general hospitals                              | Tertiary hospitals  |
| Healthcare services provided | Outpatient treatment & care, vaccinations, and health management  | Comprehensive testing & exams and inpatient treatment & care | In-depth examinations and treatment & management of diseases, disorders, and disabilities |
| Examples                     | Public health centers, traditional Korean medicine clinics, internal medicine clinics/dept., pediatric clinics/dept., family medicine clinics/dept., health examination centers, etc. | Hospitals with various medical departments                   | University hospitals, etc.  |

## 2 Departments & Areas of Treatment

### ⚙ Hospitals & Clinics

| Department                | Areas of treatment  |
|---------------------------|---|
| Neurology                 | Treatment of diseases related to the nervous system such as stroke, epilepsy, dementia, and neuralgia   |
| Internal Medicine         | Non-surgical treatment of internal organs Treatment of diseases related to digestive diseases, lung cancer, heart, blood vessels, blood pressure, diabetes, etc.    |
| Pediatrics                | Treatment of diseases in children and adolescents under the age of 18. Treatment of diseases related to the kidneys, nerves, and respiratory tract, allergies, etc. |
| Obstetrics and Gynecology | Treatment of diseases related to the female reproductive system and treatment and care related to pregnancy and childbirth  |
| Psychiatry                | Treatment of diseases associated with psychotic Symptoms  |
| Family Medicine           | Comprehensive medical treatment and care including ongoing preventive checkups and treatments for families  |
| Dermatology               | Treatment of skin-related diseases such as acne, hair loss, and rash  |

| Department                                      | Areas of treatment  |
|---|---|
| General Surgery                                 | Treatment of diseases requiring surgery, such as appendicitis, infectious diseases, and digestive system                                  |
| Orthopedics                                     | Treatment of skeletal and muscular diseases using surgical and non-surgical methods   |
| Plastic Surgery                                 | Treatment to improve appearance and function such as double eyelid surgery and treatment for burns and sequelae                           |
| Rehabilitation Medicine                         | Treatment of muscle, bone, and nervous system diseases with a physical therapist  |
| Urology   | Treatment of diseases arising from urinary organs such as the kidneys and bladder and reproductive organs such as the penis and testicles |
| Ophthalmology                                   | Treatment of diseases related to the eye and nerves of the eye, such as cataract, glaucoma, and myopia correction surgery                 |
| Otorhinolaryngology (Ear, Nose and Throat, ENT) | Treatment of diseases related to the ears, nose, and throat   |
| Dentistry                                       | Dental care including orthodontics, prosthesis, scaling, and treatment of diseases affecting a tooth's nerves, etc.                       |
| Emergency Medicine                              | Immediate diagnosis and treatment for emergency patients  |

### Traditional Korean Medicine Hospitals and Clinics

| Departments   | Areas of treatment  |
|---|---|
| Traditional Korean medicine internal medicine, gynecology, pediatrics, etc. | Treatment of all kinds of diseases based on Eastern medicine. Treatment methods and the method of making medicine differ from modern medicine |

## 3 Procedures for Using Medical Institutions

### 1 Primary Care Providers

Present your health insurance card or ID card at the reception/payment desk and wait. → When they call your name, go to the consultation room and tell the doctor about your symptoms → Ask any questions you have about the doctor's instructions. → After the checkup, pay the medical bill and receive a prescription. → Go to a pharmacy and present your prescription to buy the medicine.

### 2 Secondary Care Providers

Receive a referral form from a primary caregiver. → Go to a secondary care provider and present your health insurance card and the referral form. → Go to the relevant department and receive treatment. → Receive a prescription and, if necessary, make an appointment for follow-up care. → Pay the medical bill at the reception desk.

## Remember These Numbers in the Event of an Emergency!

- Emergency Rescue ☎ 119
- Health and Welfare Call Center ☎ 129 (area code +129 when calling from a cell phone)

### 4 General Hospitals in Incheon

A general hospital is a medical institution that provides treatment and care for severe diseases and performs major surgery, typically for inpatients. Although the cost of treatment is higher than in regular hospitals, it is staffed with excellent medical professionals and the latest medical equipment for accurate, in-depth examinations.

| Hospital   | Address                                   | Website  | Phone     |
|--|---|--|-----------|
| Gachon University Gil Medical Center                             | 21, Namdong-daero 774beon-gil, Namdong-gu | www.gilhospital.com (English, Chinese, Russian, and Mongolian)     | 1577-2299 |
| Catholic Kwandong University International St. Mary's Hospital   | 25, Simgok-ro 100beon-gil, Seo-gu         | www.ish.or.kr (English, Chinese, and Russian)                      | 1600-8291 |
| Catholic University of Korea Incheon St. Mary's Hospital         | 56, Dongsu-ro, Bupyeong-gu                | www.cmcism.or.kr (English, Chinese, and Russian)                   | 1544-9004 |
| Gumdan Top Hospital  | 5, Cheongma-ro19beon-gil, Seo-gu          | www.tophospital.co.kr  | 590-0114  |
| Na-Eun Hospital  | 23, Wonjeok-ro, Seo-gu                    | www.luga.co.kr (English, Chinese, and Russian)                     | 1661-0099 |
| Nasaret International Hospital                                   | 98, Meonwugeum-ro, Yeonsu-gu              | www.nasaret.co.kr (English, Chinese, Russian, Japanese, Mongolian) | 899-9999  |
| Bupyeong Serim Hospital  | 175, Bupyeong-daero, Bupyeong-gu          | www.iserim.co.kr (English)   | 1899-9555 |
| New Sungmin Hospital   | 70, Sinseok-ro, Seo-gu                    | www.smgh.co.kr   | 1661-1199 |
| Onnuri Hospital  | 199, Wanjeong-ro, Seo-gu                  | www.onnurihosp.com   | 567-6200  |
| Korea Workers' Compensation & Welfare Service's Incheon Hospital | 446, Munemi-ro, Bupyeong-gu               | www.comwel.or.kr/incheon/  | 5000-0114 |
| Incheon Medical Center   | 217, Bangchuk-ro, Dong-gu                 | www.icmc.or.kr (Chinese and Russian)                               | 580-6000  |
| Incheon Christian Hospital                                       | 10, Dapdong-ro 30beon-gil, Jung-gu        | www.goich.co.kr  | 270-8000  |
| Mediplex Sejong Hospital   | 20, Gyeyangmunhwa-ro, Gyeyang-gu          | https://mediplexjh.co.kr/  | 240-8000  |
| Incheon Baek Hospital  | 214, Saetgol-ro, Dong-gu                  | www.ibhhome.com  | 1800-7070 |
| Incheon Sarang Hospital  | 726, Michuhol-daero, Michuhol-gu          | www.saranghospital.com   | 457-2000  |
| Incheon Red Cross Hospital                                       | 263, Woninjae-ro, Yeonsu-gu               | www.rch.or.kr/incheon  | 899-4000  |
| Inha University Hospital   | 27, Inhang-ro, Jung-gu                    | www.inha.com (English, Chinese, and Russian)                       | 1600-8114 |
| Hallym Hospital  | 722, Jangje-ro, Gyeyang-gu                | www.hallym.net   | 540-9114  |
| Hyundai Uvis Hospital  | 503, Dokbae-ro, Michuhol-gu               | www.uvishospital.co.kr   | 888-7575  |

### Medical Institutions in Incheon Registered to Offer Services for Foreigners

| Category    | Medical institution  | Address  | Phone     |
|-------------|--|--|-----------|
| Jung-gu     | Inha University Hospital   | 27, Inhang-ro, Jung-gu, Incheon (Sinheung-dong 3-ga)   | 890-2095  |
|             | Nunpyeonhan Ophthalmic Clinic  | 4-6F, 90, Uhyeon-ro, Jung-gu, Incheon (Inhyeon-dong, U-Tower, U-Vale Nunpyeonhan Ophthalmic Clinic)          | 762-0088  |
|             | Severance Airport Clinic   | B111, B112, 66, Gonghang-ro 424beon-gil, Jung-gu, Incheon (Unseo-dong, Eclat)                                | 751-6119  |
|             | Healacarm Hospital   | 106 Yeongjong-daero, Jung-gu, Incheon (Unseo-dong)   | 746-8100  |
| Dong-gu     | Incheon Baek Hospital  | 1F, 214, Saetgol-ro, Dong-gu, Incheon (Songnim-dong)   | 1800-7070 |
|             | Incheon Medical Center   | 217, Bangchuk-ro, Dong-gu, Incheon (Songlip-dong)  | 580-6000  |
| Michuhol-gu | W Women's Hospital   | 400, Inju-daero, Michuhol-gu, Incheon (Juan-dong)  | 451-0000  |
|             | Incheon Rehabilitation Clinic  | 290, Inju-daero, Michuhol-gu, Incheon (Juan-dong)  | 866-0101  |
|             | International Peter's Hospital   | 3F, International Peter's Hospital, 53, Aam-daero, Michuhol-gu (Yonghyeon-dong, St. Rehabilitation Building) | 888-2300  |
|             | Saegun Hospital  | 430, Gyeongin-ro, Michuhol-gu, Incheon (Juan-dong)   | 427-2800  |
|             | Seoul Women's Hospital   | 771, Gyeongwon-daero, Michuhol-gu, Incheon (Juan-dong, 766 Gyeongwon-daero, Seoul Bldg. 2nd-6th floor)       | 456-3619  |
|             | Hyundai Uvis Hospital  | 503, Dokbae-ro, Michuhol-gu, Incheon (Sungui-dong, Hyundai Ubis Hospital)                                    | 888-7575  |
|             | Ilmi Dental Clinic   | 8F 428, Gyeongin-ro, Michuhol-gu, Incheon (Juan-dong, Samsung Life Insurance Building)                       | 441-3379  |
| Yeonsugu    | Seoul Cargo Dental Hospital  | #701, 7F, 81, Convensia-daero, Yeonsu-gu, Incheon (Dream City Songdo-dong)                                   | 777-1122  |
|             | BLS Clinic   | #704, 81, Convensia-daero, Yeonsu-gu, Incheon, (Dream City Songdo-dong)                                      | 422-1755  |
|             | The 22nd Century Seoul Dental Hospital                                 | #415-419 4F, 69, Convensia-daero, Yeonsu-gu, Incheon (Millennium Building 991-50 Dongchun-dong, Songdo-dong) | 858-2080  |
|             | Samsung Dream Otolaryngology Clinic                                    | 6F, 165, Convensia-daero, Yeonsu-gu, Incheon (POSCO Tower Songdo, Songdo-dong)                               | 224-0365  |
|             | Yeonsu Kim Ophthalmology Clinic  | 3F, 5F 165, Convensia-daero, Yeonsu-gu, Incheon (Northeast Asia Trade Tower, Songdo-dong,)                   | 817-3487  |
|             | Songdo First Dental Clinic   | 3F, 165, Convensia-daero, Yeonsu-gu, Incheon (NEAT Tower, Songdo-dong)                                       | 831-2812  |
|             | Jeonggang Medical Foundation JK WithMe NEAT Clinic                     | 6F, 165, Convensia-daero, Yeonsu-gu, Incheon (POSCO Tower Songdo, Songdo-dong) JK WithMe Clinic              | 715-7991  |
|             | Gene Health Clinic, Macrogen Medical Foundation, a medical corporation | 6-8F 34, Incheon tower-daero 132beon-gil, Yeonsu-gu, Incheon (Songdo-dong)                                   | 831-3200  |

| Category  | Medical institution                      | Address   | Phone    |
|-----------|--|---|----------|
| Yeonsugu  | Songdo Wellness Clinic                   | E-dong 2F 100, Artcenter-daero 168beon-gil, Yeonsu-gu (Halla Western Park Songdo, Songdo-dong)                        | 832-2040 |
|           | Songdo Joseph Dental Clinic              | 219-220ho, 402dong, 87, Art center-daero, Yeonsu-gu, Incheon (Songdo-dong, Canal Walk D4 WINTER)                      | 282-8119 |
|           | Clean Yonsei Dental Clinic               | 403ho, 168, Sinsong-ro, Yeonsu-gu, Incheon (Songdo-dong, Eden Plaza)  | 212-9700 |
|           | Clene Dermatology Clinic                 | 804-806ho, 8F, 153, Sinsong-ro, Yeonsu-gu (The Marantz Tower, Songdo-dong)  | 715-4100 |
|           | Honestar Clinic                          | 405-407ho 4F, 157, Songdogukje-daero, Yeonsu-gu, Incheon (Songdo-dong)  | 724-8200 |
|           | Jian Clinic                              | 6-7F 263, Central-ro, Yeonsu-gu, Incheon (Songdo-dong, Songdo International Business Complex C8-2 Block IBS Building) | 830-2714 |
|           | Songdo B&Me Clinic                       | 160, Central-ro, Yeonsu-gu, Incheon, Sales Facility Building 237~242 (Songdo-dong, Songdo Central Park Prugio)        | 834-5011 |
|           | Nasaret International Hospital           | 98, Meonugeum-ro, Yeonsu-gu, Incheon (Dongchun-dong)  | 899-9738 |
|           | Songdo Yonsei Orthopedics Clinic         | 2F & 3F, 167, Haedoji-ro, Yeonsu-gu, Incheon (Healing Plaza) Songdo Yonsei Orthopedics Clinic                         | 832-5488 |
|           | Noble Plastic Surgery Clinic             | 4F 160-4, Haedoji-ro, Yeonsu-gu, Incheon (Songdo-dong) Noble Plastic Surgery Clinic                                   | 508-7007 |
|           | Songdo General Surgery                   | 4F, 165, Convensia-daero, Yeonsu-gu, Incheon (POSCO Tower Songdo-dong)  | 833-0003 |
|           | U.M Obstetrics and Gynecology Clinic     | 5F, 34, Incheon tower-daero 132beon-gil, Yeonsu-gu, Incheon (Songdo-dong) Like Home Medical Center                    | 858-3773 |
| Namdonggu | Gangnam 365 Dental Clinic                | 5F 157, Songdogukje-daero, Yeonsu-gu, Incheon (Songdo-dong, Honestar)   | 817-3650 |
|           | The Hans Medi Clinic                     | 2-4F, 870, Hogupo-ro, Namdong-gu, Incheon (Guwol-dong)  | 465-2004 |
|           | True Man Men's Clinic Incheon Branch     | 4, Inha-ro 507beon-gil, Namdong-gu, Incheon (Guwol-dong, Byeokseong Building)   | 424-7585 |
|           | White Dream Dental Clinic Incheon Branch | 8F, 4, Inha-ro 489beon-gil, Namdong-gu, Incheon (Guwol-dong, Manhattan Building)                                      | 219-2879 |
|           | Dr. Evers Clinic                         | 4F, 24, Inha-ro 507beon-gil, Namdong-gu, Incheon (Previously 3F, Guwol-dong)  | 425-2010 |
|           | Vands Clinic                             | 6F, 497-15, Inha-ro, Namdong-gu, Incheon (Guwol-dong, Daegun Building)  | 429-7522 |
|           | Lien Jang. Clinic                        | 7F, 4, Inha-ro 489beon-gil, Namdong-gu, Incheon (Guwol-dong, Manhattan Building)                                      | 432-3625 |
|           | Jeon Hospital                            | 845 Inju-daero, Namdong-gu, Incheon (Mansu-dong) Jeon Hospital  | 464-6181 |

| Category   | Medical institution                                 | Address  | Phone     |
|------------|---|--|-----------|
| Namdonggu  | Elite Plastic Surgery                               | 7F, 593, Inju-daero, Namdong-gu, Incheon (Guwol-dong) Entas Building   | 424-1221  |
|            | Daechan Hospital                                    | 2F~9F, 590, Inju-daero, Namdong-gu, Incheon (Guwol-dong, Youngchang Building)  | 438-2105  |
|            | Bradom Hospital                                     | 36, Yesul-ro 192beon-gil, Namdong-gu, Incheon (Guwol-dong)   | 456-7982  |
|            | Incheon Jaseng Traditional Korean Medicine Hospital | #501-2ho, 126, Yesul-ro, Namdong-gu, Incheon (4th floor Guwol-dong)  | 1577-0007 |
|            | International Baro Hospital                         | 518, Seokjeong-ro, Namdong-gu, Incheon (Ganseok-dong) International Baro Hospital  | 722-8585  |
|            | Jeonghan Clinic                                     | #209-211, 55, Dambang-ro 21beon-gil, Namdong-gu, Incheon (Mansu-dong, New Seoul Apartment Complex)                                 | 467-8275  |
|            | Himchan General Hospital                            | 72 Nonhyeon-ro, Namdong-gu, Incheon (Nonhyeon-dong, Himchan General Hospital)  | 1899-2220 |
|            | Modu Hospital                                       | 88, Nongo-gae-ro, Namdong-gu, Incheon (Nonhyeon-dong)  | 1588-0255 |
|            | Gold-man Urology Clinic                             | 15F, 1456 Guwol-dong, Namdong-gu, Incheon Gold-man Urology Clinic  | 221-1911  |
|            | Preun World Eye Clinic                              | 5-7F 497-5, Inha-ro, Namdong-gu, Incheon (Guwol-dong, Preun World Eye Clinic)  | 431-9999  |
|            | Tami Plastic Surgery Clinic                         | 11F, 497-5, Inha-ro, Namdong-gu, Incheon (Guwol-dong, Preun World Eye Clinic)  | 1644-3246 |
|            | Oracle Dermatology Clinic                           | #602, 603 6F, Link 126, Yesul-ro, Namdong-gu, Incheon,   | 434-5311  |
|            | Impact Urologic Surgery Clinic                      | #401, Main Plaza, 15 Seongmal-ro 13beon-gil, Namdong-gu, Incheon (Guwol-dong, Main Plaza)  | 446-8002  |
|            | Seoul Centreal Dental Clinic                        | 304-305ho 222, Seochangnamsunhwan-ro, Namdong-gu, Incheon (Seochang-dong, Center Plaza)  | 469-2879  |
|            | Gil Medical Foundation Gil Hospital                 | 21, Namdong-daero 774beon-gil, Namdong-gu (Guwol-dong, Gachon Medical University Gil Hospital)                                     | 460-3855  |
| Bupyeonggu | Nanoori Hospital                                    | 156, Jangje-ro, Bupyeong-gu, Incheon (Bupyeong)  | 1688-9797 |
|            | Malgeun Saem Oriental Clinic                        | 4F, 409-410ho, 27, Annam-ro 222beon-gil, Bupyeong-gu, Incheon (Sangok-dong, Gyeongnam Apartment) Gyeongnam General Shopping Center | 517-1233  |
|            | Natural Esthetic Dental Clinic                      | 75, Bupyeong-daero, Bupyeong-gu, Incheon (Bupyeong-dong, Hanwha Life Insurance B1)   | 523-2080  |
|            | Bupyeong Fauchard Dental Clinic                     | Hyundai Securities Building, 4F, 70, Bupyeongdaero, Bupyeong-gu, Incheon (Bupyeong-dong)   | 362-2986  |
|            | Live Dental Hospital                                | 2-3F, 52, Bupyeong-daero, Bupyeong-gu, Incheon, Live Dental Hospital (Bupyeong-dong, Live Building)                                | 504-2279  |
|            | Han Gil Eye Hospital                                | 35, Bupyeong-daero, Bupyeong-gu, Incheon (Bupyeong)  | 717-5078  |



| Category    | Medical institution  | Address  | Phone     |
|-------------|--|--|-----------|
| Bupyeong-gu | Bupyeong Serim Hospital  | 175, Bupyeong-daero, Bupyeong-gu, Incheon (Cheongcheon-dong, 302-32)                                     | 509-5459  |
|             | The Catholic Univ. of Korea Incheon St. Mary's Hospital        | 56, Dongsu-ro, Bupyeong-gu, Incheon (Bupyeong-dong, and 2 other lots)                                    | 280-6441  |
|             | Seoul T-Plant Dental Clinic                                    | 6F, 11, Gwangjang-ro 4beon-gil, Bupyeong-gu, (Bupyeong-dong, Jungbo Building)                            | 516-2875  |
|             | M01 Plastic Surgery  | 4F, 1395, Gyeongwon-daero, Bupyeong-gu, Incheon (Bupyeong-dong, Bupyeong 1st Avenue)                     | 1588-2213 |
|             | Bupyeong St. Mary's Eye Clinic                                 | 4F, 1373, Gyeongwon-daero, Bupyeong-gu, Incheon (Bupyeong-dong)  | 528-7288  |
|             | Bupyeong Himchan Hospital                                      | 78, Jangje-ro, Bupyeong-gu, Incheon (Bupyeong-dong, Bupyeong Himchan Hospital) Bupyeong Himchan Hospital | 1899-2552 |
|             | Made U Clinic (Bupyeong Branch)                                | 8F, 1412, Gyeongwon-daero, Bupyeong-gu, Incheon (Bupyeong-dong) Made U Clinic                            | 715-6053  |
|             | Dain Ear Nose Throat Hospital                                  | 1242, Gyeongwon-daero, Bupyeong-gu, Incheon (Sangok-dong, Wooam Building) Dain Ear Nose Throat Hospital  | 515-2325  |
| Gyeong-gu   | Hallym Hospital  | 722, Jangje-ro, Gyeong-gu, Incheon (Jagjeon-dong)  | 540-9114  |
|             | Incheon Sejong Hospital  | 20, Gyeongmunhwa-ro, Gyeong-gu, Incheon (Jagjeon-dong)   | 240-8000  |
|             | Incheon Hi Hospital  | 1F, 1107, Gyeongmyeong-daero, Gyeong-gu, Incheon (Gyesan-dong)   | 1666-1675 |
|             | Incheon Madi Hospital  | B1, 2F-6F, 204, Gyeong-daero, Gyeong-gu, Incheon (Gyesan-dong)   | 1644-8344 |
| Seo-gu      | Gumdan Top General Hospital                                    | 5, Cheongma-ro 19beon-gil, Seo-gu, Incheon (Dangha-dong, other 2)  | 590-0114  |
|             | Jeonggang Medical Foundation Geomdan Yeppeum Clinic            | 11F, 147, Wanjeong-ro, Seo-gu, Incheon (Wang Gil-dong, Yooyoung Building)                                | 513-2252  |
|             | Catholic Kwandong University International St. Mary's Hospital | 25, Simgok-ro 100beon-gil, Seo-gu, Incheon (Simgok-dong)   | 290-2654  |
|             | Cheongna Champyeonhan 365 Clinic                               | 3F, 11, Cheongnam canal-ro 260beon-gil, Seogu, Incheon (Cheongna-dong, Jinseong Plaza)                   | 562-1175  |
|             | CU Clean Up Dermatology  | 4F, 610, Jungbong-daero, Seo-gu, Incheon (Cheongna-dong)   | 569-7590  |
|             | Human Dermatology Cheongna Branch                              | 4F, 594, Jungbong-daero, Seo-gu, Incheon (Cheongna-dong, Cheongna Vision Plaza)                          | 283-3335  |
|             | Luga Medical Foundation Naeun Hospital                         | 7F, 23, Wonjeok-ro, Seo-gu, Incheon (Gajwa-dong, Naeun Hospital)   | 1661-0099 |
|             | 365 Smile Oriental Clinic                                      | 2F, 46, Gagyongju-ro, Seo-gu, Incheon (Gajeong-dong)   | 575-4600  |

### ⚙️ Medical support for foreign workers, etc.

- **Eligibility:** Foreign workers and their children (under 18 years of age), married immigrant women who have not yet acquired Korean citizenship and their children, refugees and their children, and the homeless (Korean nationals)
- **Description:** Financial aid for inpatient treatment and surgery (incl. same-day outpatient surgery)

### ⚙️ 11 medical institutions providing medical support for foreign workers

Incheon Medical Center, Incheon Red Cross Hospital, Nasaret International Hospital, Bupyeong Serim Hospital, Hallym Hospital, Gumdan Top Hospital, Na-Eun Hospital, Sungmin Hospital, Hyundai Uvis Hospital, and Mediplex Sejong Hospital, Korea Labor Welfare Corporation Incheon Hospital

### 5 Public Health Centers

Public health centers, established to improve public health in the local community, offer affordable healthcare services. Each public health center provides a wide range of services.

| Name                             | Address                               | Phone        |
|----------------------------------|---------------------------------------|--------------|
| Jung-gu Public Health Center     | 21, Chamoejeon-ro 72beon-gil, Jung-gu | 032-760-6010 |
| Dong-gu Public Health Center     | 90, Seoksu-ro, Dong-gu                | 032-770-5700 |
| Michuhol-gu Public Health Center | 25, Juanseo-ro, Michuhoil-gu          | 032-880-5310 |
| Yeonsu-gu Public Health Center   | 13, Hambangmoe-ro, Yeonsu-gu          | 032-749-8000 |
| Namdong-gu Public Health Center  | 633, Sorae-ro, Namdong-gu             | 032-453-5070 |
| Bupyeong-gu Public Health Center | 291, Buheung-ro, Bupyeong-gu          | 032-509-8200 |
| Gyeyang-gu Public Health Center  | 88, Gyesan-daero, Gyeyang-gu          | 032-430-7801 |
| Seo-gu Public Health Center      | 39, Tagok-ro, Seo-gu                  | 032-560-5000 |
| Ganghwa-gun Public Health Center | 26-1, hungnyeolsa-ro, Ganghwa-eup     | 032-930-4061 |
| Ongjin-gun Public Health Center  | 120, Maesohol-ro, Michuhol-gu         | 032-899-3128 |

### 6 Traditional Korean Medicine Clinics

These clinics provide medical treatment and care based on traditional Korean medicine. The main treatment methods are acupuncture, herbal medicine, moxibustion, and qi treatment.

## 7 Pharmacies

Pharmacists compound medications at the pharmacy according to the prescriptions from doctors or sell over-the-counter medications such as digestives, nutritional supplements, vitamins, health drinks, and cold medicine. Pharmacies open at night and on holidays can be found on the 'Holiday Guide Pharmacy website (www.pharm114.or.kr)' provided by the Korean Pharmaceutical Association.

## 8 Social Security Programs

Various welfare services are provided for people in need and minorities, and vulnerable groups such as women, persons with disabilities, children, and adolescents. Foreign residents can also receive social security benefits within the legal limits.

### 1 National Basic Living Security

The program guarantees a minimum standard of living for people with a low income, difficulty affording the minimum cost of living, or suffering financial problems due to a sudden accident/injury, or disease.

• **Ministry of Health and Welfare Website:** [www.mohw.go.kr](http://www.mohw.go.kr) (available in English) ☎ 129

### ⚙ Judgment Criteria

The "median income" is used as a yardstick for judgment. Eligible persons are selected based on the criteria for the available allowance, and the assistance is individually tailored. The scope of support varies depending on the selection criteria.

### ⚙ Eligible Foreigners

Foreigners who have completed the foreigner registration under Article 31 of the 「Immigration Act」 and fall under any of the following

- A person who is married to a Korean citizen and is pregnant or is a spouse of a Korean citizen who is pregnant
  - A person who is married to a Korean citizen and is raising an underage child (including a stepparent relationship and adoptive relationship) of Korean nationality
  - A person who is living or sharing living expenses with a lineal ascendant of his/her spouse who is a Korean citizen
  - A person who has been widowed or divorced by a Korean citizen and is raising an underage child of Korean nationality or is pregnant with a child of a deceased spouse who possessed Korean nationality
  - Foreigners residing in Korea who are recognized as refugees by the Minister of Justice under Article 2, Item 2 of the 「Refugee Act」 (According to Article 32 (Basic Living Security) of the 「Refugee Act」)
- ※ In this case, you must submit a foreign residence card and a refugee recognition certificate.

### Application Procedure and Method

Application for the benefits (local community center) -> Examination (income, assets, and information provided) -> Decision (on whether to give the benefits and the details) -> Provision of benefits (payment of the determined amount in cash or its equivalent)

## National Pension

This social security program allows the national pension plan enrollees to receive a pension when they can no longer work and earn an income.

- **National Pension Service website:** [www.nps.or.kr](http://www.nps.or.kr)  
(available in English, Chinese, Indonesian, Thai, and Mongolian) ☎ 1355

### | Applicable Standard |

- 9 % of the enrollee's standard income

### | Eligibility Criteria Foreigners |

- A foreign employer or worker of a place of business subject to national pension plan enrollment which is aged 18 to under 60
- A foreigner aged 18 to under 60 who is living in Korea and has not enrolled pension through a workplace

### | Exclusion Criteria |

- Trainees (those receiving training for employment are required to enroll), international students, diplomats, etc., who are not obligated to enroll in the national pension plan by law
- People to whom the national pension plan of Korea does not apply according to the national pension law of their home country
- People who are a citizen of a country that has concluded a social security agreement with Korea and who submits a certificate of enrollment in the national pension plan of their home country

- ※ **For more information on eligibility, etc., go to the National Pension Service website.**  
**([www.nps.or.kr](http://www.nps.or.kr))**

- Pension Information – Information on National Pension Plan – Enrollment and Notification – Foreign Enrollees

### Countries Excluded from the National Pension Program (22 Countries) [As of 2019]

Vietnam, Myanmar, Bangladesh, Nepal, Saudi Arabia, Singapore, Iran, Pakistan, Cambodia, South Africa, East Timor, Maldives, Belarus, Armenia, Ethiopia, Egypt, Tonga, Fiji, Georgia, Swaziland, Nigeria, and Malaysia

### | Application Procedure and Method |

- For workplaces enrolled in the national pension plan: Application submitted by the workplace (employer)
- For regional enrollees (self-employed): Notify the National Pension Service directly

### | Pension Payment |

- Foreigners who meet the conditions for pension payment can receive old age pension, survivor's pension (for bereaved families), and disability pension.
- If foreign workers return to their home country, they can receive a refund of the national pension contributions (as a lump-sum refund), but this may not be the case for some countries or due to the status of sojourn.
  - ※ For inquiries about the countries eligible for a lump-sum refund (refund of national pension contributions when returning to one's home country), please go to the National Pension Service website ([www.nps.or.kr](http://www.nps.or.kr)) – National Pension Plan – Foreigners and Lump-sum Refund.

## 3 Emergency Welfare Support

Emergency Welfare Support program was implemented to help low-income families facing difficulties maintaining their livelihood due to a crisis by providing various services such as living, healthcare, and housing support.

- **Ministry of Health and Welfare website:** [www.mohw.go.kr](http://www.mohw.go.kr) (available in English) 129

### | Eligibility Criteria for Foreigners |

Foreigners residing in Korea who meet the following criteria.

- ※ If people who have received the support do not meet the eligibility criteria or need such assistance, they will be required to return the funds.
- A person who is married to a Korean citizen
- A person who has divorced from or been widowed by a Korean citizen and is taking care of his/her former/ deceased spouse's lineal ascendant/descendant (parent or child) of Korean nationality
- A person who has been recognized as a refugee according to Article 2 Subparagraph 2 of the Refugee Act
- A person who has suffered damages from a fire, crime, or natural disaster, the cause of which is not attributable to him/her
- Other cases in which the person in question is deemed to need urgent support by the Minister of Health and Welfare
- A person who has suffered damages from an accident/disaster, etc., the cause of which is not attributable to him/her
- A person who is granted to stay in Korea on humanitarian grounds according to Article 2 Subparagraph 3 of the Refugee Act
- A person recognized by the Minister of Justice as having made an exceptional contribution to Korea or contributed to the promotion of the public interest

### | How to apply |

※ You can find more detailed information on the Ministry of Health and Welfare website ([www.mohw.go.kr](http://www.mohw.go.kr))-Policy-Welfare-Basic Living Security-Emergency Welfare Support.

#### Application and Report

- Gun/gu/Eup/myeon/dong community center
- Health and Welfare Call Center (☎129)

#### Support provided after on-site check

- Head of si/gun/gu (public official in charge of emergency support)

#### Follow-up investigation

- Income and assets

#### Eligibility review

- If deemed unsuitable by the Emergency Support Review Committee (members from public and private sectors), the financial assistance is suspended, and the person in question will be required to pay back the funds provided

#### Follow-up connection

- Introduced to a customized basic livelihood security system and Incheon welfare system (basic livelihood security, emergency welfare)



## 9 Work & Labor (Labor Standards Act, Social Insurance, etc.)



### 1 Information on Employment for Foreigners

- **Ministry of Employment and Labor website:** [www.moel.go.kr](http://www.moel.go.kr) (available in English) ☎ 1350



### 1 Employment

Foreigners can work according to the type of visa issued.

Married immigrants who have entered Korea with a “spouse visa” are legally permitted to work.

### ※ Type of Visas that allows employment

Short-term employment (C-4), specialized technology (E-1~7), non-professional employment (E-9), Crew employment (E-10), Working holiday (H-1), Working visit (H-2), Resident (F-2), Overseas Korean (F-4), Permanent resident (F-5), etc. You can check ☎1345 or visit Hi Korea ([www.hikorea.go.kr](http://www.hikorea.go.kr)) if you have other questions.

## 2 Employment Permit System for Foreign Workers

The employment permit system allows small and medium-sized enterprises (SMEs) that cannot find Koreans to hire “non-professional foreign workers” by obtaining an employment permit from the government. A workplace that intends to hire foreign workers should fall under the category of “businesses that are permitted to employ foreign workers” or “businesses or workplaces that can employ people.” They must also fulfill a set of criteria, such as “making an effort to hire a Korean national for at least 14 days” before they can hire a foreigner with non-professional employment (E-9) or working visit (H-2) visa within the scope allowed by the employment permit.

\* For information on the categories of businesses eligible for employment permits and the number of foreign workers they can hire (quota), please go to the Employment Permit System website ([www.eps.go.kr](http://www.eps.go.kr))→About EPS.

### ⚙️ Available Languages on EPS (16 countries that the foreign workers concerned are from)

Filipino, Mongolian, Sri Lankan, Vietnamese, Thai, Indonesian, Uzbek, Pakistani, Cambodian, Chinese, Bangladeshi, Nepali, Kyrgyz, Burmese, Tetum, Lao

## 3 General Foreigner Employment Procedure

### ⚙️ Test of Proficiency in Korean (TOPIK)

- Prepare and submit a list of foreign job seekers (Human Resources Development Service of Korea)
- Conclude a standard labor contract
- Provide vocational education
- Entry into Korea and employment training
- Placement of foreign employees at workplaces

※ Change of workplace: Foreign workers must, in principle, continue working at the workplace where they first started. However, when it is recognized that it is difficult to continue normal employment relations due to business closure or overdue wages, workers are exceptionally allowed to change their workplace up to 3 times to guarantee the fundamental human rights of foreign workers.

### Valid Reasons for Moving (Changing) Workplace

- ① If the employer terminates the employment contract under a justifiable cause or refuses to renew it after its expiration.
- ② If a foreign worker cannot continue working at a workplace for reasons not attributable to the foreign worker, such as suspension or closure of business.
- ③ Human rights violations such as assault, unpaid wages, poor work conditions, etc., resulting in cancellation of the employment permit or restrictions against hiring foreigners
- ④ If a foreign worker finds it difficult to continue working at the current work due to injury, etc., but it is possible to work at another type of workplace
- ⑤ Anyone who interferes with foreign workers' efforts to change their business or workplace may be imprisoned for up to one year or fined up to 10 million won

When the employment relationship with the employer is terminated, the foreign worker must apply for a workplace change at the Employment Center and search for a job based on the center's job recommendations. The foreign worker has one month from the date of resignation to apply for a change of workplace and find a job within three months. Otherwise, the foreign worker will be forced to leave the country, so it is recommended to actively find a job within the given time frame.

※ Anyone other than the Employment Center staff cannot intervene in the above process (recruitment, job arrangements, etc.). A violation is punishable by imprisonment of up to 1 year or a fine of up to 10 million won. (Article 29 of the Employment of Foreign Manpower Act)

## 4 Foreign Worker Insurance

• **Employment Permit System ([www.eps.go.kr](http://www.eps.go.kr))** : ☎1350

### What is Foreign Worker Insurance?

It refers to the four insurances (Departure Guarantee Insurance, Wage Payment Guarantee Insurance, Return Cost Insurance, and Casualty Insurance) that foreign workers or their employers must subscribe to per the Employment of Foreign Manpower Act.

### Enrollment Obligations

The employer must subscribe to the Departure Guarantee Insurance and Wage Payment Guarantee Insurance, while the foreign worker must enroll in the Return Cost Insurance and Casualty Insurance. The first two insurances are necessary for an employer to receive an employment permit to hire foreigners, so potential employers are advised to contact the Employment Center to check their eligibility.

※ For direct product subscription, inquire about a public financial institution offering such insurance policies as the Seoul Guarantee Insurance (SGI) Company.



| Category                         | Purchased by     | Description   | Payment method   |
|----------------------------------|------------------|---|--|
| Departure Guarantee Insurance    | Employer         | To provide severance pay when the foreign worker is about to leave the country, etc. (contributions made monthly) | 8.3% of the monthly wages  |
| Wage Payment Guarantee Insurance |                  | Insurance against delayed payment of wage for foreign workers   | 16,000 won per person per year   |
| Return Cost Insurance            | Foreign Employee | Securing the return cost of a foreign worker  | 400,000 to 600,000 won per country   |
| Casualty Insurance               |                  | Insurance against any disease, or death of worker, not caused by an occupation injury or industrial accident      | Applied differently based on age and gender (9,100 won per year - based on age 30) |

## 2 Labor Standards Act

It refers to the labor standards enacted as a law to promote the balanced development of the national economy by guaranteeing a basic standard of living for workers. All workers (incl. foreign workers) are protected under the Labor Standards Act.

### ⚙️ Employment Contracts

This contract is signed between an employer and an employee. It is crucial to keep the contract as documents as the contracts cover the agreements of significant issues, including wages and job responsibilities.

※ Protection of Employees per the Labor Standards Law ( Source: Labor Standards Law and Act on the Guarantee of Employees' Retirement Benefits)

- Applicable to all businesses or workplaces with five or more full-time employees.
- The Labor Standards Law is applied partially to businesses or workplaces with four or fewer employees.
- Wages must be paid in cash directly on a fixed date (bank transfer is also possible). The wages shall be paid at least once a month on the specified day and regularly.
- Employees who have been working continuously for one year or more may receive severance pay.
- Additional wages may be paid to employees who work overtime, at night, and on holidays.
- Employees may file a petition to the competent local labor offices and the division of labor supervision if employers fail to pay wages & severance pay, employees become victims of violence from employers or supervisors or are forced to work overtime against employees' will.

### **Minimum Wage**

It refers to the minimum wages the government requires employers to pay employees so they can maintain their rights & benefits and a minimum standard of living.

Minimum wage as of 2022: KRW 9,160 (per hour)

### **Working Hours (applicable to workplaces with five and more full-time employees)**

- Weekly working hours should be at most 40 hours except for break time.
- Daily working hours should be at most 8 hours except for break time.
  - ※ An employer shall allow employees a break of not less than 30 minutes in cases of working for four hours or a break of not less than one hour in cases of working for eight hours during work hours.
- Employers must provide break time during working hours.
- Based on the agreement between employers and employees, employees can work 12 hours of overtime per week. In such a case, employees will be paid 1.5 times the regular rate of pay for overtime hours.
  - ※ There is no time limit for overtime work at workplaces with fewer than five employees, so overtime pay is not required.

### **Delays in Payment of Wages**

If employers fail to pay wages on time, foreign workers may report such a case to a labor supervisory officer of the competent local office of labor and request action. When a complaint is filed to the local labor offices, inspection will be conducted on employers and employees after 10 to 14 days from the report. Employees are recommended to prepare various materials to prove their claim.

## **Social Insurances**

Social insurances are intended to protect people against social risks. Common examples are 'industrial accident compensation insurance' (mandatory) against occupational accidents; 'national health insurance' (mandatory) against diseases and injuries; 'employment insurance' (voluntary) against unemployment; and 'national pension' (reciprocity) for protection against invalidity, death, and old age. These four types of insurance are called "four major social insurances" in Korea. Foreign workers can also receive various benefits by subscribing to social insurance.

- ※ Insurance premiums are deducted collectively when wages are paid.
- ※ You can inquire regarding enrollment on the website or the call center of the relevant institution.

⚙️ **National Health Insurance ☎ 1577-1000**

- National Health Insurance Service website [www.nhis.or.kr](http://www.nhis.or.kr) (available in Japanese, Chinese, and Vietnamese)

⚙️ **Industrial Accident Compensation Insurance ☎ 1588-0075**

- Korea Workers' Compensation and Welfare Service website [www.kcomwel.or.kr](http://www.kcomwel.or.kr) (available in English)

⚙️ **Employment Insurance ☎ 1588-0075**

- Korea Workers' Compensation and Welfare Service website [www.kcomwel.or.kr](http://www.kcomwel.or.kr)

⚙️ **National Pension ☎ 1355**

- National Pension Service website [www.nps.or.kr](http://www.nps.or.kr) (available in English, Chinese, Indonesian, Thai, and Mongolian)

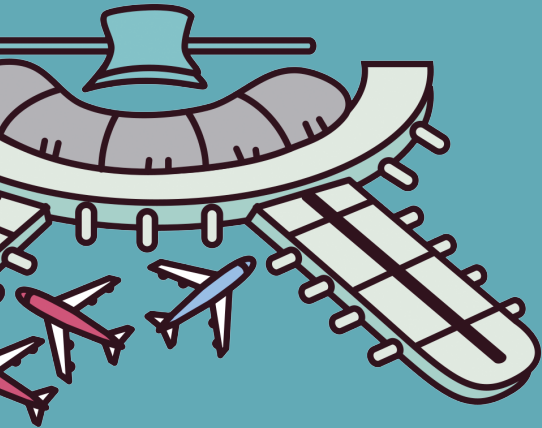


# V

## Information on related organizations



Guidebook for Living in Incheon For Foreign Residents • Be the Incheoner





# V

## Information on related organizations

### Si/Gun/Gu Offices in Incheon

| Name               | Address  | Website  | Phone        |
|--------------------|--|--|--------------|
| Incheon City Hall  | 29 Jeonggak-ro, Namdonggu( Guwol-dong)           | <a href="http://www.incheon.go.kr">www.incheon.go.kr</a><br>(English, Japanese, and Chinese)       | 032-120      |
| Jung-gu Office     | 80, Sinpo-ro 27beon-gil, Jung-gu (Gwandong 1-ga) | <a href="http://www.icjg.go.kr">www.icjg.go.kr</a><br>(English, Japanese, and Chinese)             | 032-760-6010 |
| Dong-gu Office     | 67, Geumgok-ro, Dong-gu (Songnim-dong)           | <a href="http://www.icdonggu.go.kr">www.icdonggu.go.kr</a><br>(English, Japanese, and Chinese)     | 032-770-6114 |
| Michuhol-gu Office | 95, Dokjeongi-ro, Michuhol-gu (Songui-dong)      | <a href="http://www.michu.incheon.kr">www.michu.incheon.kr</a><br>(English, Japanese, and Chinese) | 032-887-1011 |
| Yeonsu-gu Office   | 115, Woninjae-ro (Dongchundong)                  | <a href="http://www.yeonsu.go.kr">www.yeonsu.go.kr</a><br>(English, Japanese, and Chinese)         | 032-749-7114 |
| Namdong-gu Office  | 633, Sorae-ro, Namdong-gu (Mansu-dong)           | <a href="http://www.namdong.go.kr">www.namdong.go.kr</a><br>(English, Japanese, and Chinese)       | 032-466-3811 |
| Bupyeong-gu Office | 168, Bupyeong-daero, Bupyeong-gu (Bupyeong-dong) | <a href="http://www.icbp.go.kr">www.icbp.go.kr</a><br>(English, Japanese, and Chinese)             | 032-504-2114 |
| Gyeyang-gu Office  | 88, Gyesansae-ro, Gyeyang-gu (Gyesan-dong)       | <a href="http://www.gyeyang.go.kr">www.gyeyang.go.kr</a><br>(English, Japanese, and Chinese)       | 032-551-5701 |
| Seo-gu Office      | 307, Seogot-ro, Seo-gu (Simgokdong)              | <a href="http://www.seo.incheon.kr">www.seo.incheon.kr</a><br>(English, Japanese, and Chinese)     | 032-562-5301 |
| Ganghwa-gun Office | 394, Ganghwa-daero, Ganghwaep, Ganghwa-gu        | <a href="http://www.ganghwa.go.kr">www.ganghwa.go.kr</a><br>(English, Japanese, and Chinese)       | 032-930-3114 |
| Ongjin-gun Office  | 120, Maesohol-ro, Michuhol-gu (Yonghyeon-dong)   | <a href="http://www.ongjin.go.kr">www.ongjin.go.kr</a><br>(English, Japanese, and Chinese)         | 032-899-2114 |

## Offices of Education in Incheon

| Name                                     | Address   | Website  | Phone          |
|--|---|--|----------------|
| Incheon Metropolitan Office of Education | 9, Jeonggak-ro, Namdong-gu (Guwol-dong)                       | <a href="http://www.ice.go.kr">www.ice.go.kr</a><br>(English, Japanese, and Chinese) | 032-423-3303   |
| Nambu Office of Education                | 45, Chinatown-ro 51beon-gil, Jung-gu (Songhak-dong 1-ga)      | <a href="http://nambu.ice.go.kr">nambu.ice.go.kr</a>                                 | 032-762-7361   |
| Dongbu Office of Education               | 923, Inju-daero, Namdong-gu (Mansu-dong)                      | <a href="http://dongbu.ice.go.kr">dongbu.ice.go.kr</a>                               | 032-460-6000   |
| Bukbu Office of Education                | 35, Bupyeongmunhwa-ro 53beon-gil, Bupyeong-gu (Bupyeong-dong) | <a href="http://bukbu.ice.go.kr">bukbu.ice.go.kr</a>                                 | 032-524-9631~2 |
| Seobu Office of Education                | 713, Gyeongmyeong-daero, Seogu (Gongchon-dong)                | <a href="http://seobu.ice.go.kr">seobu.ice.go.kr</a>                                 | 032-560-6600   |
| Ganghwa Office of Education              | 607, Jungang-ro, Bureun-myeon, Ganghwa-gun (Samseong-ri)      | <a href="http://ganghwa.ice.go.kr">ganghwa.ice.go.kr</a>                             | 032-930-7777   |

## Other Major Administrative Agencies

| Name                                  | Address                                     | Website  | Phone        |
|---------------------------------------|---|--|--------------|
| Incheon Immigration Office            | 393, Seohae-daero, Jung-gu (Hang-dong 7-ga) | <a href="http://www.immigration.go.kr">www.immigration.go.kr</a>             | 032-890-6407 |
| Incheon Job Welfare Plus Center       | 1313, Munhwa-ro, Namdong-gu (Guwol-dong)    | <a href="http://www.work.go.kr/incheon">www.work.go.kr/incheon</a>           | 032-460-4701 |
| Incheon Bukbu Job Welfare Plus Center | 804, Jangje-ro, Gyeyang-gu (Gyesan-dong)    | <a href="http://www.work.go.kr/incheonbukbu">www.work.go.kr/incheonbukbu</a> | 032-540-5641 |

## Other Related Agencies

| Agency  | Address  | Website  | Phone     | Field       |
|---|--|--|-----------|-------------|
| KEPCO Incheon Regional Headquarters               | 246, Jubuto-ro, Bupyeong-gu (Galsan-dong)        | <a href="http://home.kepcoco.kr">home.kepcoco.kr</a>                               | 032-123   | Electricity |
| Waterworks Headquarters Incheon Metropolitan City | 225, Seokjeong-ro, Michuhol-gu (Dohwa-dong)      | <a href="http://www.incheon.go.kr/water">www.incheon.go.kr/water</a>               | 032-120   | Water       |
| Incheon City Gas                                  | 23, Baekbeom-ro 934beon-gil, Seo-gu (Gajwa-dong) | <a href="http://www.icgas.co.kr/2016/start.asp">www.icgas.co.kr/2016/start.asp</a> | 1600-0002 | City Gas    |

| Agency                                      | Address   | Website                               | Phone     | Field                      |
|---|---|---------------------------------------|-----------|----------------------------|
| Incheon Driver's License Examination Office | 1247, Aam-daero, Namdonggu (Gojan-dong)           | dl.koroad.or.kr/PAGE_license/         | 1577-1120 | Driver's license           |
| Incheon Transit Corporation                 | 674, Gyeongin-ro, Namdonggu (Ganseok-dong)        | www.ict.or.kr                         | 1899-4446 | Subway operation           |
| Incheon Bus Terminal                        | 35, Yeonnam-ro, Michuhol-gu (Gwangyo-dong)        | www.ict.or.kr                         | 1666-7114 | Intercity bus operation    |
| Korea Railroad Corporation                  | 240, Jungang-ro, Dong-gu, Daejeon (Soje-dong)     | info.korail.com                       | 1544-7788 | Train ticketing            |
| Korea Airports Corporation                  | 78, Haneul-gil, Gangseo-gu, Seoul (Gonghang-dong) | www.airport.co.kr                     | 1661-2626 | Air travel                 |
| Incheon International Airport Corporation   | 17, Gonghang-ro 424beon-gil, Jung-gu (Unseo-dong) | https://www.airport.kr/co/ko/index.do | 1577-2600 |                            |
| Incheon Coastal Passenger Terminal          | 70, Yeonanbudo-ro, Jung-gu (Hang-dong 7-ga)       | www.ipfc.or.kr                        | 1599-5985 | Sea travel (domestic)      |
| Incheon International Ferry Terminal        | 57, Gukjehangman-daero, Yeongsu-gu                |                                       |           | Sea travel (international) |
| National Health Insurance Service           | -   | www.nhis.or.kr                        | 1577-1000 | National Health Insurance  |
| National Pension Service                    | -   | www.nps.or.kr                         | 1355      | National Pension           |

## Multicultural Family Support Centers

| Center      | Address   | Website   | Phone          |
|-------------|---|---|----------------|
| Jung-gu     | 23, Dapdong-ro, Jung-gu (Gyeong-dong)                       | icjung.familynet.or.kr  | 032-763-9337   |
| Dong-gu     | 8, Bangmun-ro, Dong-gu (Songnim-dong)                       | http://icdonggu.co.kr/  | 032-773-0297   |
| Michuhol-gu | 189, Soseong-ro, Michuhol-gu (Hagik-dong)                   | http://www.liveinkorea.kr/center/main/main.do?centerId=incheonnamgu | 032-875-2993   |
| Yeonsu-gu   | 109, Cheongneung-daero (Yeonsu-dong)                        | yeonsu.familynet.or.kr  | 032-851-2730   |
| Namdong-gu  | 203-31, Hogupo-ro, Namdong-gu (Nonhyeon-dong)               |   | 032-467-3904   |
| Bupyeong-gu | 103, Yeorumul-ro, Bupyeong-gu (Sipyeong-dong)               |   | 032-511-1809   |
| Gyeyang-gu  | 5, Gyeyangsang-ro 102beon-gil, Gyeyang-gu (Gyesan-dong)     |   | 032-541-2860-1 |
| Seo-gu      | 6, Gyeongmyeong-daero 693beon-gil, Seo-gu (Gongchon-dong)   |   | 032-569-1560-2 |
| Ganghwa-gun | 11-1, Bungmun-gil, Ganghwa-eup, Ganghwa-gun (Gwancheong-ri) |   | 032-932-1005   |



## Other Foreigner Support Centers

| Center   | Address  | Website                            | Phone        |
|--|--|------------------------------------|--------------|
| IFEZ Global Center                             | 175 Art center-daero, Yeonsu-gu, Incheon (Songdo-dong) | global.ifez.go.kr                  | 032-453-7350 |
| Incheon Support Center for Foreign Workers     | 220, Hogupo-ro, Namdong-gu (Nonhyeon-dong)             | www.infc.or.kr                     | 032-431-5757 |
| Incheon Help Center for Foreigners             | 40, Yesul-ro 192beon-gil, Namdong-gu (Guwol-dong)      | www.incheon.go.kr/welfare/WE020510 | 032-429-2677 |
| Michuhol-gu Support Center for Foreign Workers | 229, Seokjeong-ro, Michuhol-gu (Dohwa-dong)            | -                                  | 032-880-7467 |

## Korean Language Education Institutions

| Institution   | Address                                      | Phone         |
|---|--|---------------|
| Incheon National University Korean Language Institute                   | 169, Gaetbeol-ro, Yeonsu-gu (Songdo-dong)    | 032-835-9553  |
| Inha University Korean Language Education Center                        | 100, Inha-ro, Michuhol-gu (Yonghyeon-dong)   | 032-860-8273  |
| Yonsei University Global Campus Korean Language Institute               | 85, Songdogwahak-ro, Yeonsu-gu (Songdo-dong) | 032-749-3103  |
| Sungsan Hyo University Institute of International Affairs and Education | 543, Seokjeong-ro, Namdong-gu (Ganseok-dong) | 070-4631-7773 |
| Kyung-in Women's University   | 63, Gyeyangsan-ro, Gyeyang-gu (Gyesan-dong)  | 032-540-0114  |

## Free online Korean language learning institute

| Institution                   | Address   | Available Language   |
|-------------------------------|---|--|
| Nuri-Sejong Hakdang           | <a href="http://nuri.iksi.or.kr">http://nuri.iksi.or.kr</a>                               | Korean, English, Chinese, Japanese, French, Thailand, Vietnam, Spain, Indonesian |
| The Cyber University of Korea | <a href="http://korean.cuk.edu">http://korean.cuk.edu</a>                                 | Korean, English  |
| EBS Durian                    | <a href="http://www.ebs.co.kr/durian/kr/course">http://www.ebs.co.kr/durian/kr/course</a> | Korean, English, Chinese, Vietnam  |

## Schools for Foreigners

| Institution  | Address  | Website                                 | Phone        |
|--|--|---|--------------|
| Incheon Overseas Chinese Zhongsan Middle & Elementary School | 19, Chinatown-ro 55beon-gil, Jung-gu (Seollin-dong)      | -                                       | 032-772-3615 |
| Chadwick International                                       | 45, Art center-daero 97beon-gil, Yeonsu-gu (Songdo-dong) | www.chadwickinternational.org (English) | 032-250-5000 |
| Cheongna Dalton School                                       | 344, Cheomdandong-ro, Seo-gu (Cheongna-dong)             | www.daltonschool.kr (English)           | 032-563-0523 |

## Multicultural School

| Institution            | Address  | Website  | Phone        |
|------------------------|--|--|--------------|
| Incheon Hannuri School | 215, Nonhyeongjoan-ro, Namdong-gu<br>(Nonhyeon-dong) | <a href="http://hannuri.icesc.kr">hannuri.icesc.kr</a> | 032-627-2250 |

## Public Health Centers

| Name                             | Address                                  | Website   | Phone        |
|----------------------------------|--|---|--------------|
| Jung-gu Public Health Center     | 21, Chamoejeon-ro 72beon-gil,<br>Jung-gu | <a href="http://www.icjg.go.kr/health">www.icjg.go.kr/health</a>  | 032-760-6010 |
| Dong-gu Public Health Center     | 90, Seoksu-ro, Dong-gu                   | <a href="http://www.icdonggu.go.kr/open_content/clinic">www.icdonggu.go.kr/open_content/clinic</a>        | 032-770-5700 |
| Michuhol-gu Public Health Center | 25, Juanseo-ro, Michuhoil-gu             | <a href="http://michu.incheon.kr/clinic/index.asp">michu.incheon.kr/clinic/index.asp</a>                  | 032-880-5310 |
| Yeonsu-gu Public Health Center   | 13, Hambangmoe-ro, Yeonsu-gu             | <a href="http://www.yeonsu.go.kr/clinic">www.yeonsu.go.kr/clinic</a>                                      | 032-749-8000 |
| Namdong-gu Public Health Center  | 633, Sorae-ro, Namdong-gu                | <a href="http://www.namdong.go.kr/clinic">www.namdong.go.kr/clinic</a>                                    | 032-464-4001 |
| Bupyeong-gu Public Health Center | 291, Buheung-ro, Bupyeong-gu             | <a href="http://www.icbp.go.kr/clinic">www.icbp.go.kr/clinic</a>  | 032-509-8200 |
| Gyeyang-gu Public Health Center  | 63, Gyeyangmunhwa-ro,<br>Gyeyang-gu      | <a href="http://www.gyeyang.go.kr/open_content/clinic">www.gyeyang.go.kr/open_content/clinic</a>          | 032-430-7801 |
| Seo-gu Public Health Center      | 39, Tagok-ro, Seo-gu                     | <a href="http://www.seo.incheon.kr/open_content/clinic/">www.seo.incheon.kr/open_content/clinic/</a>      | 032-718-0400 |
| Ganghwa-gun Public Health Center | 26-1, Chungnyeolsa-ro,<br>Ganghwaep      | <a href="http://www.ganghwa.go.kr/open_content/clinic/">http://www.ganghwa.go.kr/open_content/clinic/</a> | 032-930-4061 |
| Ongjin-gun Public Health Center  | 120, Maesohol-ro, Michuhol-gu            | <a href="http://www.ongjin.go.kr/open_content/clinic">www.ongjin.go.kr/open_content/clinic</a>            | 032-899-3128 |

## Libraries

| Sortation                                | Institution      | Address  | Phone        |
|--|------------------|--|--------------|
| Incheon Metropolitan Office of Education | Jungang Library  | 9, Jeonggak-ro, Namdong-gu (Guwol-dong)                    | 032-421-1152 |
|  | Hwadojin Library | 122, Hwadojin-ro, Dong-gu (Hwasu-dong)                     | 032-760-4100 |
|  | Gyeyang Library  | 18, Gyeyangsan-ro 134beon-gil, Gyeyang-gu<br>(Gyesan-dong) | 032-540-4400 |

| Sortation                                | Institution                       | Address  | Phone          |
|--|-----------------------------------|--|----------------|
| Incheon Metropolitan Office of Education | Ganseok 3-dong Children's Library | 186, Yongcheon-ro, Namdong-gu (Ganseok-dong)                       | 032-453-5926   |
|  | Mansu 2-dong Children's Library   | 46, Mansuseo-ro, Namdong-gu (Mansu-dong)                           | 032-453-5742   |
|  | Namdong Nonhyeon Library          | 15, Cheongneung-daero 611beon-gil, Namdong-gu (Nonhyeon-dong)      | 032-453-6430   |
|  | Seochang Library                  | 15, Dokgok-ro, Namdonggu (Seochang-dong)                           | 032-453-5950~7 |
|  | Sorae Library                     | 793, Aenggogaero, Namdong-gu (Nonhyeon-dong)                       | 032-453-5940   |
| Bupyeong-gu libraries                    | Galsan Library                    | 254, Jubuto-ro, Bupyeong-gu (Galsan-dong)                          | 032-362-0261   |
|  | Bugae Library                     | 46, Buil-ro 83beon-gil, Bupyeong-gu                                | 032-505-0062   |
|  | Bugae Children's Library          | 166, Dongsu-ro, Bupyeong-gu (Bugae-dong)                           | 032-505-1131   |
|  | Bupyeong Miracle Library          | 166, Giljunam-ro, Bupyeong-gu (Bugae-dong)                         | 032-505-0612   |
|  | Samsan Library                    | 445, Bupyeongbuk-ro, Bupyeong-gu (Samsan-dong)                     | 032-330-7014   |
|  | Cheongcheon Library               | 23, Wongil-ro, Bupyeonggu (Cheongcheon-dong)                       | 032-330-9171   |
| Ganghwa-gun libraries                    | Ganghwa Library                   | 18, Bungmun-gil 9beon-gil, Ganghwaeup, Ganghwa-gun (Gwancheong-ri) | 032-932-8264   |
|  | Wisdom Forest Library             | 131, Daemungogae-ro, Seonwon-myeon, Ganghwa-gun                    | 032-934-8273~4 |
|  | Naega Library                     | 249, Ganghwaseo-ro, Naega-myeon, Ganghwagun (Gocheon-ri)           | 032-934-1528   |
| Seo-gu libraries                         | Geomdan Library                   | 92beon-gil, Seo-gu (Majeon-dong)                                   | 032-561-4117   |
|  | Geomam Library                    | 20, Geomam-ro 20beon-gil, Seo-gu (Geomam-dong)                     | 032-565-1610   |
|  | Sinseok Library                   | 299, Yeomgok-ro, Seo-gu (Seongnam-dong)                            | 032-571-9457   |
|  | Simgok Library                    | 31, Simgok-ro, Seo-gu, (Simgok-dong)                               | 032-568-0133   |
|  | Seomgok Library                   | 6-12, Seodal-ro 137beongil, Seo-gu (Seongnam-dong)                 | 032-575-260    |
| Gyeyanggu libraries                      | Dongyang Library                  | 31, Dangmi-gil, Gyeyanggu (Dongyang-dong)                          | 032-541-1800   |
|  | Seoun Library                     | 16, Anaji-ro 457beon-gil, Gyeyang-gu (Seoun-dong)                  | 032-556-8597   |

| Sortation                 | Institution                             | Address   | Phone        |
|---------------------------|---|---|--------------|
| Gyeyanggu libraries       | Jakjeon Library                         | 4, Ojosan-ro 21beon-gil, Gyeyang-gu (Jakjeon-dong)                                    | 032-555-9734 |
|                           | Imhak Library                           | 26-1, Imhakdong-ro, Gyeyang-gu (Imhak-dong)   | 032-551-9701 |
|                           | IT small library                        | 159, Gyeyang-daero, Gyeyang-gu, Gyeongin National University of Education Station, B1 | 032-541-1316 |
|                           | Hyoseong Library                        | 14, Bongo-daero 600beon-gil, Gyeyang-gu (Hyoseong-dong)                               | 032-547-3862 |
| Yeonsugu public libraries | Yeonsu Children's Library               | 164, Meonugeum-ro, Yeonsu-gu (Dongchun-dong)  | 032-749-8200 |
|                           | Yeonsu Cheonghak Library                | 146, Solsaem-ro, Yeonsugu (Cheonghak-dong)  | 032-749-8270 |
|                           | Haedoji Library                         | 7, Haedoji-ro, Yeonsu-gu  | 032-749-8200 |
|                           | Seonhagbyeolbich Library                | 30, Neommal-ro, Yeonsu-gu   | 032-749-6710 |
|                           | Dongchunnalae Library                   | 30, Bongjaesan-ro 54beon-gil, Yeonsu-gu   | 032-749-8240 |
|                           | Hambagbilyu Library                     | 217, Hambagan-ro, Yeonsu-gu   | 032-749-6970 |
|                           | Songdo International Children's Library | 43, Convensia-daero, Yeonsu-gu (Songdo-dong)  | 032-749-8220 |
| Dong-gu library           | Songnim Library                         | 72, Saecheonnyeon-ro, Dong-gu (Songnim-dong)  | 032-770-6776 |
| Michuholgu libraries      | Gwangyo Library                         | 452, Inha-ro, Michuhol-gu (Gwangyo-dong)  | 032-421-8630 |
|                           | Dokjeong-gol Children's Library         | 1, Inju-daero 171beon-gil, Michuhol-gu (Yonghyeon-dong)                               | 032-872-0043 |
|                           | Sungui Children's Library               | 304, Chamoejeon-ro, Michuhol-gu (Sungui-dong)   | 032-882-0182 |
|                           | Ssukgol Children's Library              | 49, Yeomjeon-ro 202beon-gil, Michuhol-gu (Dohwa-dong)                                 | 032-872-8630 |
|                           | Irang Library                           | 7, Michuhol-daero 578beon-gil, Michuhol-gu (Juan-dong)                                | 032-427-2283 |
|                           | Jemulpo Library                         | 22-1, Subong-ro, Michuhol-gu(Sungui-dong)   | 032-887-8836 |
|                           | Seokbawi children's library             | 59, Gyeongwon-daero 864beon-gil, Michuhol-gu (Juan-dong)                              | 032-422-0651 |
|                           | Yongbi Library                          | 82, Togeumnam-ro, Michuhol-gu(Yonghyeon-dong)   | 032-881-2416 |
|                           | Hangnarae Library                       | 444, Hannaru-ro, Michuhol-gu (Hagikdong)  | 032-728-6820 |
|                           | Sogeumkkoch Children's Library          | 7, Seokjeong-ro 462beon-gil, Michuhol-gu(Juan-dong)                                   | 032-872-0731 |

| Sortation                                  | Institution                    | Address   | Phone        |
|--|--------------------------------|---|--------------|
| Michuholgu libraries                       | Hanuri Children's Library      | 22, Juanseo-ro 53beongil, Michuhol-gu (Juan-dong)               | 032-872-0814 |
|  | Jangsarae Children's Library   | 20, Gyeongin-ro 34beongil, Michuhol-gu (Sungui-dong)            | 032-886-5055 |
| Incheon                                    | Kkumbeot Library               | 32, Hongyemun-ro, Jung-gu (Songhak-dong)                        | 032-764-6111 |
|  | Subong Library                 | 218, Gyeongin-ro, Michuhol-gu (Dohwa-dong)                      | 032-870-9100 |
|  | Yeongjong Library              | 85, Yeongjong-daero, Jung-gu (Unseo-dong)                       | 032-745-6000 |
|  | Yulmok Library                 | 17, Dapdong-ro 24beongil, Jung-gu (Yulmok-dong)                 | 032-770-3800 |
| Incheon Metropolitan City Michuhol Library | Michuhol Library               | 53, Inju-daero 776beongil, Namdong-gu (Guwol-dong)              | 032-462-3900 |
|  | Yeongjong Haneul Library       | 132, Haneuljungang-ro, Jung-gu (Jungsan-dong)                   | 032-746-9142 |
|  | Cheongna International Library | 24, Damji-ro, Seo-gu (Cheongna-dong)                            | 032-562-6823 |
|  | Cheongna Hosu Library          | 59, Crystal-ro, Seo-gu (Cheongna-dong)                          | 032-563-9579 |
|  | Majeon Library                 | 563, Wondang-daero, Seo-gu (Majeon-dong)                        | 032-590-2800 |
| Special library                            | Songam Braille Library         | 105-19, Hannaru-ro 375beon-gil, Michuhol-gu (Hagik-dong)        | 032-876-3504 |
| Ongjin-gun public libraries                | Daecheong Public Library       | 116-22, Daecheong-ro 244beon-gil, Daecheongmyeon, Ongjin-gun    | 032-836-9500 |
|  | Baengnyeong Public Library     | 260, Baengnyeong-ro, Baengnyeong-myeon, Ongjin-gun (Jinchon-ri) | 032-899-3086 |
|  | Yeongheung Public Library      | 283-31, Yeongheung-ro, Yeongheung-myeon, Ongjin-gun (Nae-ri)    | 032-886-7710 |
| Small library                              | Dorim Library                  | 46, Dorim-ro, Namdong-gu (Dorim-dong)                           | 032-438-0062 |





Guidebook for Living in Incheon For Foreign Residents

## Be the Incheoner

**Issue date** : 2022. 12. 30

**Issued by** : Family Multicultural Division, Incheon Metropolitan City

**Address** : 809, Namdong-daero, Namdong-gu, Incheon, Family Multicultural Division, Incheon  
Metropolitan City Hall New Building

**Homepage** : [www.incheon.go.kr](http://www.incheon.go.kr)

**Design Production** : Berry's Corporation

※ The copyright of this book is owned by Incheon City, and unauthorized reproduction and copying are prohibited.





Guidebook for Living in Incheon For Foreign Residents

# Be the Incheoner



Incheon Metropolitan City

21555 809, Namdong-daero, Namdong-gu, Incheon, Family Multicultural  
Division, Incheon Metropolitan City Hall New Building  
Tel. 032-440-2802 Fax. 032-440-8723

